

Excellent Integrated System Limited

Stocking Distributor

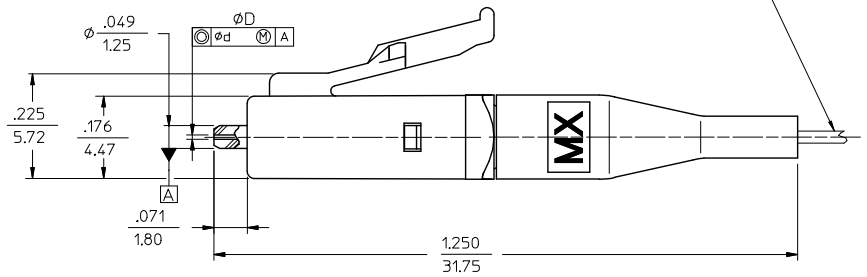
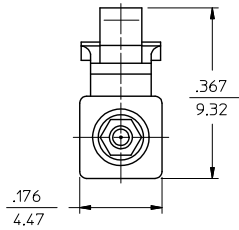
Click to view price, real time Inventory, Delivery & Lifecycle Information:

[Molex Connector Corporation](#)
[1060243500](#)

For any questions, you can email us directly:
sales@integrated-circuit.com

CONNECTOR P/N	øD (Hm)	ød (Hm)	HOUSING COLOR	BOOT COLOR	CABLE TYPE
106024-2500	125.50 ^{+0.50} / ₀	1.0	BLUE	WHITE	SINGLE MODE
106024-2512				RED	
106024-3550	127.00 ^{+3.00} / ₀	3.0	BEIGE	WHITE	MULTIMODE
106024-3500				BLUE	
106024-4500	125.00 ^{+0.50} / ₀	1.0	BLUE	WHITE	SINGLE MODE
106024-5500				RED	
106024-5540	126.00 ^{+1.00} / ₀	1.0	BLUE	RED	SINGLE MODE
106024-5580				BLUE	
106024-5590	125.25 ^{+0.50} / ₀	0.5	BLUE	WHITE	SINGLE MODE
106090-2700				WHITE	
106090-4500	125.00 ^{+0.50} / ₀	0.5	BLUE	WHITE	SINGLE MODE
106090-6500				WHITE	
106090-4510	125.2-125.5	1.4	BEIGE	WHITE	SINGLE MODE
106090-4520	125.51-125.9				
106099-0500	81.0±0.5	1.4	BEIGE	WHITE	SINGLE MODE
106024-2513	125.50 ^{+0.50} / ₀	0.5	BEIGE	YELLOW	SINGLE MODE
106024-5530	126.00 ^{+1.00} / ₀	1.0	BEIGE	WHITE	SINGLE MODE

(DUST CAP NOT SHOWN)



NOTE:

- ALL DIMENSIONS ARE GIVEN IN INCHES/MM, EXCEPT OTHERWISE SPECIFIED.
- P/N 106024-3310 AND 106024-5540 ARE BULK PACKED.

ENTER DESCRIPTION E.C. NO: ME2013-0244 DRAWN/REVISED: 2012/10/29 CHKD: GUMIN APPR: GUMIN 2012/10/31	QUALITY SYMBOLS ▽=0 ▽=0	GENERAL TOLERANCES (UNLESS SPECIFIED)		DIMENSION STYLE		SCALE	DESIGN UNITS	THIRD ANGLE PROJECTION			
				IN/MM		5:1	INCH				
				DRAWN BY DATE		CHECKED BY DATE		LC CONNECTOR (BARE FIBER)			
				PGIBLIN 2005/09/02							
		APPROVED BY DATE		MATERIAL NO.		DOCUMENT NO.		SHEET NO.			
				SEE TABLE		SD-1060KK-KKK0		1 OF 1			
		ANGULAR ± 1 °		DRAFT WHERE APPLICABLE MUST REMAIN WITHIN DIMENSIONS		THIS DRAWING CONTAINS INFORMATION THAT IS PROPRIETARY TO MOLEX INCORPORATED AND SHOULD NOT BE USED WITHOUT WRITTEN PERMISSION					