

Excellent Integrated System Limited

Stocking Distributor

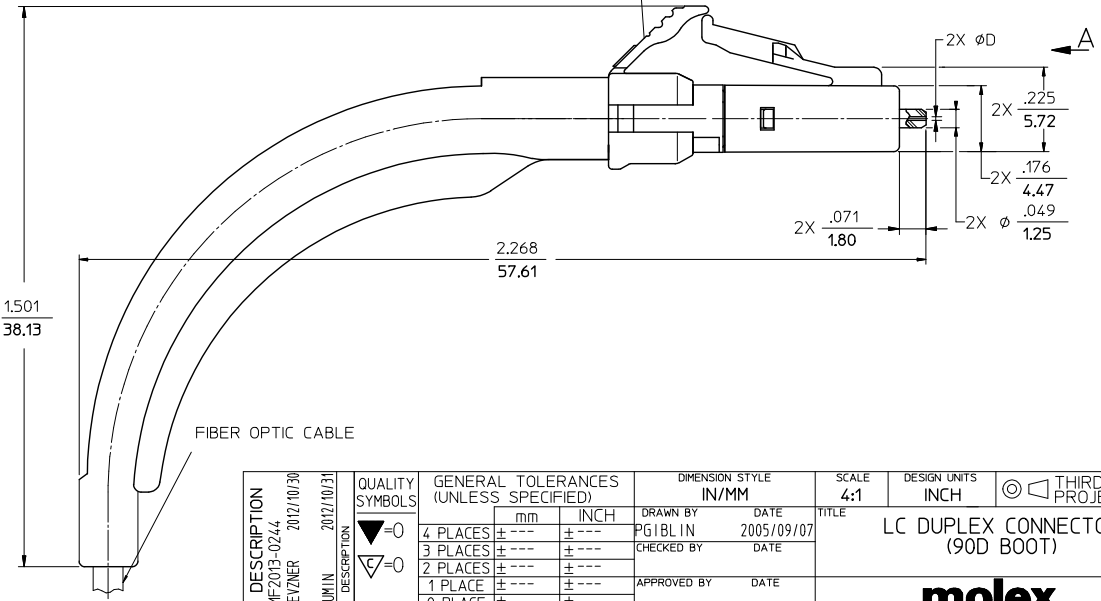
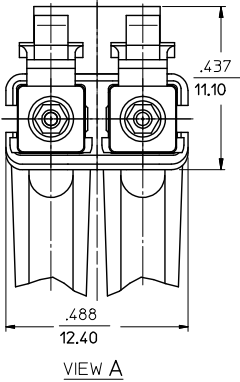
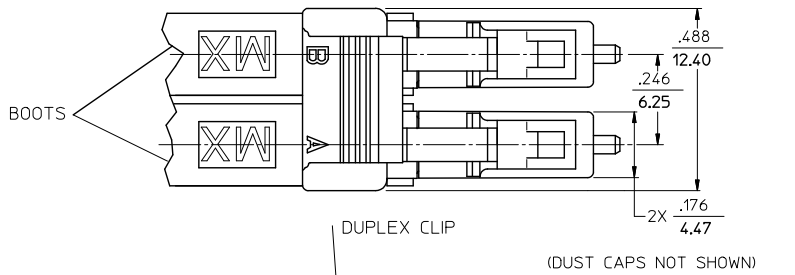
Click to view price, real time Inventory, Delivery & Lifecycle Information:

[Molex Connector Corporation](#)
[1060252400](#)

For any questions, you can email us directly:

sales@integrated-circuit.com

| CONNECTOR P/N | ØD (Hm) | CONNECTOR BODY COLOR | BOOT COLOR | CABLE Ø (mm) | CABLE TYPE |
|---------------|---------|----------------------|------------|--------------|-------------|
| 106025-2400 | 125.50 | BLUE | WHITE | 1.6 | SINGLE MODE |
| 106025-2600 | 125.50 | BLUE | | 2.0 | |
| 106025-3400 | 127.00 | BEIGE | | 1.6 | MULTIMODE |
| 106025-3600 | | | | 2.0 | |
| 106025-4400 | 125.00 | BLUE | WHITE | 1.6 | SINGLE MODE |
| 106025-4600 | 126.00 | | | 2.0 | |
| 106025-5400 | | | | 1.6 | |
| 106025-5600 | | | | 2.0 | |
| 106025-6400 | | | | 1.6 | |
| 106025-6600 | 125.25 | | | 2.0 | |



NOTES:
1. DUPLEX CLIP AND BOOTS SHOULD BE ASSEMBLED AFTER POLISHING OPERATION.

| | | | | | | | | |
|---|--------------------------------------|--|---------|---|--|---------------------|-----------------------------|--|
| ENTER DESCRIPTION ELC NO: ME2013-0244 DRAWN/REVZNER 2012/10/30 CHKD: [blank] APPR: GUMIN 2012/10/31 REV: A1 | QUALITY SYMBOLS ▽=0 ▽=0 | GENERAL TOLERANCES (UNLESS SPECIFIED) | | DIMENSION STYLE IN/MM | | SCALE 4:1 | DESIGN UNITS INCH | <input checked="" type="checkbox"/> THIRD ANGLE PROJECTION |
| | | 4 PLACES ± --- ± --- 3 PLACES ± --- ± --- 2 PLACES ± --- ± --- 1 PLACE ± --- ± --- 0 PLACE ± --- ± --- | mm INCH | DRAWN BY PGIBLIN DATE 2005/09/07 CHECKED BY DATE APPROVED BY DATE | TITLE LC DUPLEX CONNECTOR (90D BOOT) | | | |
| ANGULAR ±1/2° DRAFT WHERE APPLICABLE MUST REMAIN WITHIN DIMENSIONS | | MATERIAL NO. SEE TABLE | | DOCUMENT NO. SD-1060EE-EEEE | | molex | | |
| | | SIZE B | | THIS DRAWING CONTAINS INFORMATION THAT IS PROPRIETARY TO MOLEX INCORPORATED AND SHOULD NOT BE USED WITHOUT WRITTEN PERMISSION | | | SHEET NO. 1 OF 1 | |