

Excellent Integrated System Limited

Stocking Distributor

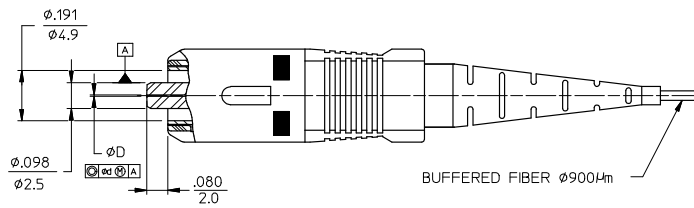
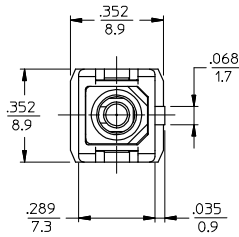
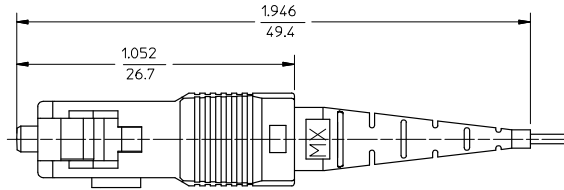
Click to view price, real time Inventory, Delivery & Lifecycle Information:

[Molex Connector Corporation](#)
[1060323570](#)

For any questions, you can email us directly:

sales@integrated-circuit.com

CONNECTOR P/N	ød (In)	ød (Mm)	BOOT COLOR	HOUSING COLOR	CONNECTOR TYPE
106032-0500	127	3.0 +0.0 -0.0	5.0	BLUE	MULTIMODE
106032-0510				WHITE	
106032-0560				BEIGE	
106032-0570				BLACK	
106032-0580				RED	
106032-2500	125.5	1.0 +1.0 -0.0	1.0	YELLOW	SINGLE MODE
106032-2510				WHITE	
106032-2570				BLACK	
106032-2580				RED	
106032-3500	128	3.0 +2.0 -0.0	3.0	BLUE	MULTIMODE
106032-3510				WHITE	
106032-3560				BEIGE	
106032-3570				BLACK	
106032-3580				RED	
106032-5500	126	1.0 +1.0 -0.0	1.0	YELLOW	SINGLE MODE
106032-5520				BLUE	
106032-5510				WHITE	
106032-5570				BLACK	
106032-5580				RED	
106032-6500	125.5	0.5 +0.5 -0.0	0.5	YELLOW	SINGLE MODE
106032-6510				WHITE	
106032-7500	127	1.0 +1.0 -0.0	1.0	YELLOW	SINGLE MODE
106032-7510				WHITE	



NOTES:

*1. P/N 106032-5520 IS BULK PACKED IN QUANTITIES OF 100 PCS.

ENTER DESCRIPTION IEC NO: MF2008-0420 DRAWN: MARGARENE 2008/04/01 CHKD: MARGARENE 2008/04/01 APPR: MARGARENE 2008/04/01 DESCRIPTION	QUALITY SYMBOLS	GENERAL TOLERANCES (UNLESS SPECIFIED)	DIMENSION STYLE	SCALE	DESIGN UNITS	THIRD ANGLE PROJECTION	
	▽=0 ▽=0	4 PLACES ± --- ± --- 3 PLACES ± --- ± --- 2 PLACES ± --- ± --- 1 PLACE ± --- ± --- ANGULAR ±1/2°	IN/MM INCH	DRAWN BY DATE PG/BLIN 2005/09/15 CHECKED BY DATE APPROVED BY DATE	4:1	INCH	SC BARE FIBER CONNECTOR (TUNABLE)
	DRAFT WHERE APPLICABLE MUST REMAIN WITHIN DIMENSIONS	MATERIAL NO. SEE TABLE	MOLEX INCORPORATED	DOCUMENT NO. SD-106032-Y5Y0	SHEET NO. 1 OF 1		
	THIS DRAWING CONTAINS INFORMATION THAT IS PROPRIETARY TO MOLEX INCORPORATED AND SHOULD NOT BE USED WITHOUT WRITTEN PERMISSION						