

Excellent Integrated System Limited

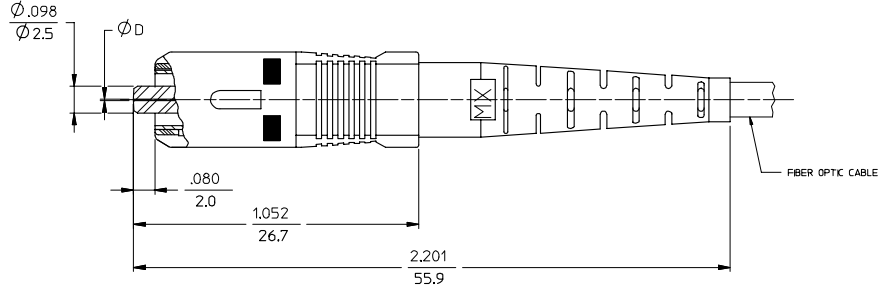
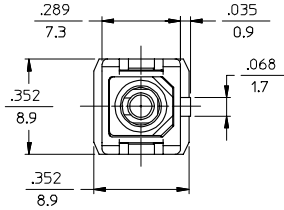
Stocking Distributor

Click to view price, real time Inventory, Delivery & Lifecycle Information:

[Molex Connector Corporation](#)
[1060327000](#)

For any questions, you can email us directly:

sales@integrated-circuit.com



NOTES:

1. ALL DIMENSIONS ARE FOR REFERENCE ONLY.

*2. P/NS 106032-5020, 106032-0140, 106032-5310, 106032-5990 AND 106032-0910 ARE BULK PACKED IN QUANTITIES OF 100 pcs.

ENTER DESCRIPTION ILC NO: MF2007-0445 DRAWN BY: JRM/REV: JRM CHKD: JRM/REV: JRM APPR: JGM/REV: JGM B1	QUALITY SYMBOLS $\nabla=0$ $\sphericalangle=0$	GENERAL TOLERANCES (UNLESS SPECIFIED)		DIMENSION STYLE IN/MM	SCALE 4:1	DESIGN UNITS INCH	THIRD ANGLE PROJECTION		
		4 PLACES ±--- ±---	3 PLACES ±--- ±---	2 PLACES ±--- ±---	1 PLACE ±--- ±---	DRAWN BY: RPACIFICI DATE: 2005/12/22	TITLE: SC CONNECTOR (TUNABLE)		
		ANGULAR ±1/2°				APPROVED BY: _____ DATE: _____	MOLEX INCORPORATED		
		DRAFT WHERE APPLICABLE MUST REMAIN WITHIN DIMENSIONS		MATERIAL NO. SEE TABLE SIZE C	DOCUMENT NO. SD-106032-XXX0	SHEET NO. 1 OF 3			

10	9	8	7	6	5	4	3	2	1		
CONNECTOR P/N	Ø (Hm)	BOOT COLOR	HOUSING COLOR	CONNECTOR TYPE	CABLE (mm)	CONNECTOR P/N	Ø (Hm)	BOOT COLOR	HOUSING COLOR	CONNECTOR TYPE	CABLE (mm)
106032-0000	127	BLUE	BLUE	MULTIMODE	3	106032-3000	128	BLUE	BLUE	MULTIMODE	3
106032-0900					2.0 & 1.6 DUPLEX	106032-3900					2.0 & 1.6 DUPLEX
106032-0100					1.6 SIMPLEX	106032-3100					1.6 SIMPLEX
106032-0050		WHITE	BEIGE		3	106032-3060		3			
106032-0950					2.0 & 1.6 DUPLEX	106032-3960		2.0 & 1.6 DUPLEX			
106032-0150					1.6 SIMPLEX	106032-3160		1.6 SIMPLEX			
106032-0060		BEIGE	BEIGE		3	106032-3050		3			
106032-0910*					2.0 & 1.6 DUPLEX	106032-3950		2.0 & 1.6 DUPLEX			
106032-0960					1.6 SIMPLEX	106032-3150		1.6 SIMPLEX			
106032-0140*		RED	RED		3	106032-3080		3			
106032-0160					2.0 & 1.6 DUPLEX	106032-3980		2.0 & 1.6 DUPLEX			
106032-0080					1.6 SIMPLEX	106032-3180		1.6 SIMPLEX			
106032-0980	BLACK	BLACK	3	106032-3070	3						
106032-0180			2.0 & 1.6 DUPLEX	106032-3970	2.0 & 1.6 DUPLEX						
106032-0070			1.6 SIMPLEX	106032-3170	1.6 SIMPLEX						
106032-0970	125.5	YELLOW	SINGLE MODE	3	106032-2000	3					
106032-0170				2.0 & 1.6 DUPLEX	106032-2900	2.0 & 1.6 DUPLEX					
106032-2000				1.6 SIMPLEX	106032-2100	1.6 SIMPLEX					
106032-2900		WHITE		BLUE	3	106032-2050	3				
106032-2100					2.0 & 1.6 DUPLEX	106032-2950	2.0 & 1.6 DUPLEX				
106032-2050					1.6 SIMPLEX	106032-2150	1.6 SIMPLEX				
106032-2950		RED		RED	3	106032-2080	3				
106032-2150					2.0 & 1.6 DUPLEX	106032-2980	2.0 & 1.6 DUPLEX				
106032-2080					1.6 SIMPLEX	106032-2180	1.6 SIMPLEX				
106032-2980		BLACK		BLACK	3	106032-2070	3				
106032-2180					2.0 & 1.6 DUPLEX	106032-2970	2.0 & 1.6 DUPLEX				
106032-2070					1.6 SIMPLEX	106032-2170	1.6 SIMPLEX				

ENTER DESCRIPTION EC NO: MF2007-0445 DRAWN BY: DRINKWELTZNER CHKD: 2007/01/12 APPR: GUMIN 2007/01/15	QUALITY SYMBOLS ▽=0 ▽=0	GENERAL TOLERANCES (UNLESS SPECIFIED)		DIMENSION STYLE	SCALE	DESIGN UNITS	THIRD ANGLE PROJECTION
		mm	INCH	IN/MM	4:1	INCH	
		DRAWN BY: RPACIFIC1		DATE: 2005/12/22	TITLE: SC CONNECTOR (TUNABLE)		
		CHECKED BY:		DATE:	APPROVED BY: MOLEX INCORPORATED		
DRAFT WHERE APPLICABLE MUST REMAIN WITHIN DIMENSIONS		MATERIAL NO. SEE TABLE		DOCUMENT NO. SD-106032-XXX0	SHEET NO. 2 OF 3		
SIZE B		THIS DRAWING CONTAINS INFORMATION THAT IS PROPRIETARY TO MOLEX INCORPORATED AND SHOULD NOT BE USED WITHOUT WRITTEN PERMISSION					

10	9	8	7	6	5	4	3	2	106032		
CONNECTOR P/N	Ø (Hm)	BOOT COLOR	HOUSING COLOR	CONNECTOR TYPE	CABLE (mm)	CONNECTOR P/N	Ø (Hm)	BOOT COLOR	HOUSING COLOR	CONNECTOR TYPE	CABLE (mm)
106032-4000	125	YELLOW	BLUE	SINGLE MODE	3	106032-6000	125.5	YELLOW	BLUE	SINGLE MODE	3
106032-4900					2.0 & 1.6 DUPLEX	106032-6900					2.0 & 1.6 DUPLEX
106032-4100					1.6 SIMPLEX	106032-6100					1.6 SIMPLEX
106032-4050					3	106032-7000					3
106032-4950					2.0 & 1.6 DUPLEX	106032-7900					2.0 & 1.6 DUPLEX
106032-4150		1.6 SIMPLEX	106032-7100		1.6 SIMPLEX						
106032-4080		3	106032-7050		3						
106032-4980		2.0 & 1.6 DUPLEX	106032-7950		2.0 & 1.6 DUPLEX						
106032-4180		1.6 SIMPLEX	106032-7150		1.6 SIMPLEX						
106032-4070		3	106032-7080		3						
106032-4970	126	BLACK	BLACK	SINGLE MODE	2.0 & 1.6 DUPLEX	106032-7980	127	WHITE	RED	SINGLE MODE	2.0 & 1.6 DUPLEX
106032-4170					1.6 SIMPLEX	106032-7180					1.6 SIMPLEX
106032-5000					3	106032-7070					3
106032-5020*					2.4	106032-7970					2.0 & 1.6 DUPLEX
106032-5300					2.0 & 1.6 DUPLEX	106032-7170					1.6 SIMPLEX
106032-5310*		1.6 SIMPLEX									
106032-5900		3									
106032-5990*		2.0 & 1.6 DUPLEX									
106032-5100		1.6 SIMPLEX									
106032-5050		WHITE	BLUE		SINGLE MODE	3					
106032-5950	2.0 & 1.6 DUPLEX										
106032-5150	1.6 SIMPLEX										
106032-5080	3										
106032-5980	2.0 & 1.6 DUPLEX										
106032-5180	RED	RED	SINGLE MODE	1.6 SIMPLEX							
106032-5070				3							
106032-5970				2.0 & 1.6 DUPLEX							
106032-5170				1.6 SIMPLEX							

ENTER DESCRIPTION EC NO: MF2007-0445 DRAWN: REIZNER CHKD: GUMIN APPR: GUMIN B1	QUALITY SYMBOLS ▽=0 ▽=0	GENERAL TOLERANCES (UNLESS SPECIFIED)		DIMENSION STYLE	SCALE	DESIGN UNITS	THIRD ANGLE PROJECTION
		mm	INCH	IN/MM	4:1	INCH	
		DRAWN BY: RPACIFIC1		DATE: 2005/12/22	TITLE: SC CONNECTOR (TUNABLE)		
		CHECKED BY:		DATE:	APPROVED BY:		
APPROVED BY:		DATE:	MATERIAL NO.:		DOCUMENT NO.:	SHEET NO.:	
DRAFT WHERE APPLICABLE MUST REMAIN WITHIN DIMENSIONS		SEE TABLE		SD-106032-XXX0		3 OF 03	
THIS DRAWING CONTAINS INFORMATION THAT IS PROPRIETARY TO MOLEX INCORPORATED AND SHOULD NOT BE USED WITHOUT WRITTEN PERMISSION							