

Excellent Integrated System Limited

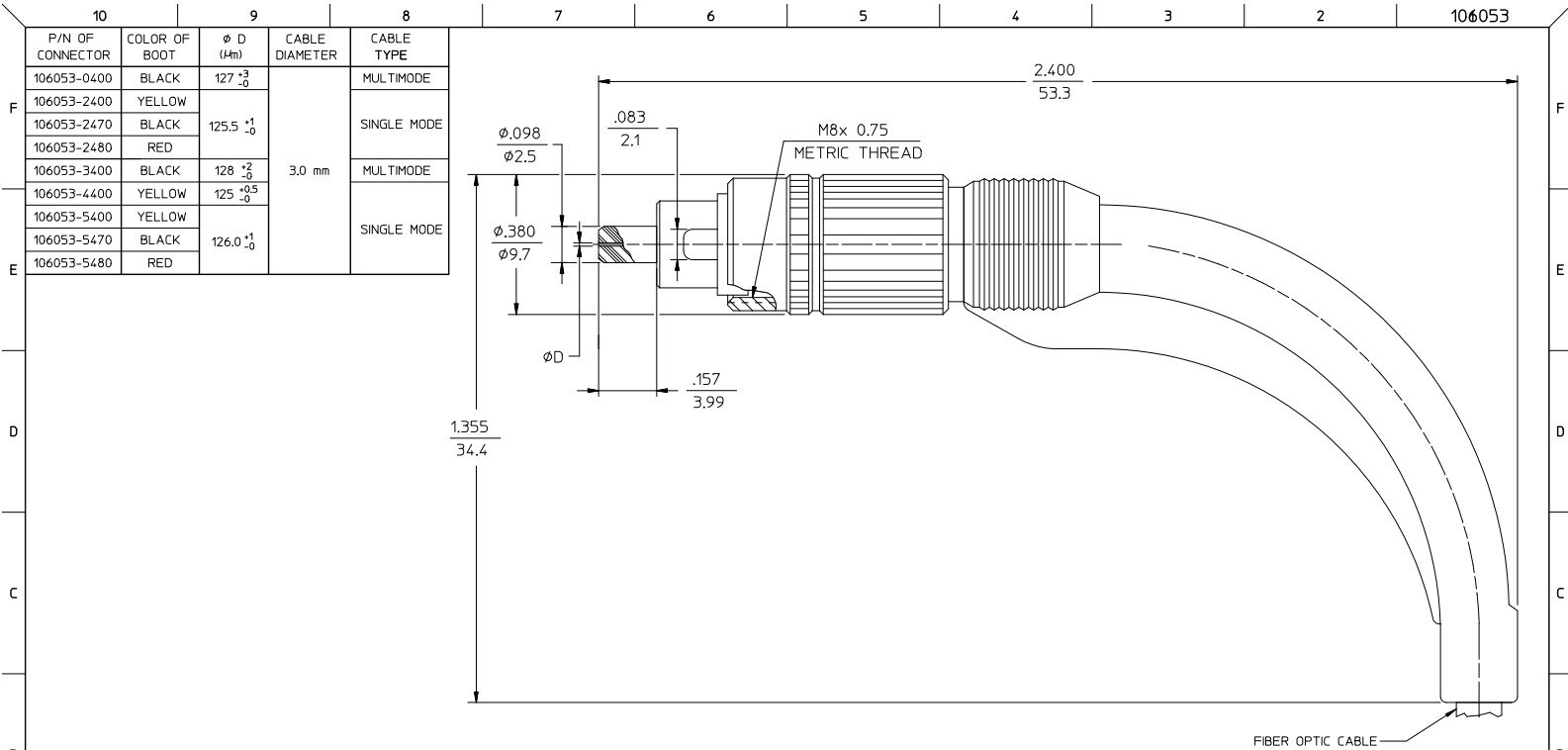
Stocking Distributor

Click to view price, real time Inventory, Delivery & Lifecycle Information:

[Molex Connector Corporation](#)
[1060530400](#)

For any questions, you can email us directly:

sales@integrated-circuit.com



P/N OF CONNECTOR	COLOR OF BOOT	φ D (Hm)	CABLE DIAMETER	CABLE TYPE
106053-0400	BLACK	127 ⁺³ ₋₀	3.0 mm	MULTIMODE
106053-2400	YELLOW	125.5 ⁺¹ ₋₀		SINGLE MODE
106053-2470	BLACK			SINGLE MODE
106053-2480	RED	128 ⁺² ₋₀		MULTIMODE
106053-3400	BLACK			MULTIMODE
106053-4400	YELLOW	125 ^{+0.5} ₋₀		SINGLE MODE
106053-5400	YELLOW	126.0 ⁺¹ ₋₀		
106053-5470	BLACK			
106053-5480	RED			

NOTE:
1. DUST CAP INCLUDED, BUT NOT SHOWN.

ENTER DESCRIPTION EIC NO: ME2012-0610 DRAWN BY: BIRNIMAGHAYERE 2012/06/06 CHKD: [blank] APPR: GUMIN 2012/06/06 REV: A1	QUALITY SYMBOLS	GENERAL TOLERANCES (UNLESS SPECIFIED)		DIMENSION STYLE		SCALE	DESIGN UNITS	THIRD ANGLE PROJECTION
	▽=0	mm	INCH	IN/MM		4:1	INCH	
	▽=0	4 PLACES ±	±	DRAWN BY	DATE	TITLE		
		3 PLACES ±	±	PGIBLIN	2005/10/24	FC CONNECTOR WITH 90D BOOT		
	2 PLACES ±	±	CHECKED BY	DATE	molex DOCUMENT NO. SD-106053-ZZZ0 SHEET NO. 1 OF 1			
	1 PLACE ±	±	APPROVED BY	DATE				
	0 PLACE ±	±	MATERIAL NO. SEE TABLE					
ANGULAR ±1/2°		DRAFT WHERE APPLICABLE MUST REMAIN WITHIN DIMENSIONS						
SIZE B THIS DRAWING CONTAINS INFORMATION THAT IS PROPRIETARY TO MOLEX INCORPORATED AND SHOULD NOT BE USED WITHOUT WRITTEN PERMISSION								