

## Excellent Integrated System Limited

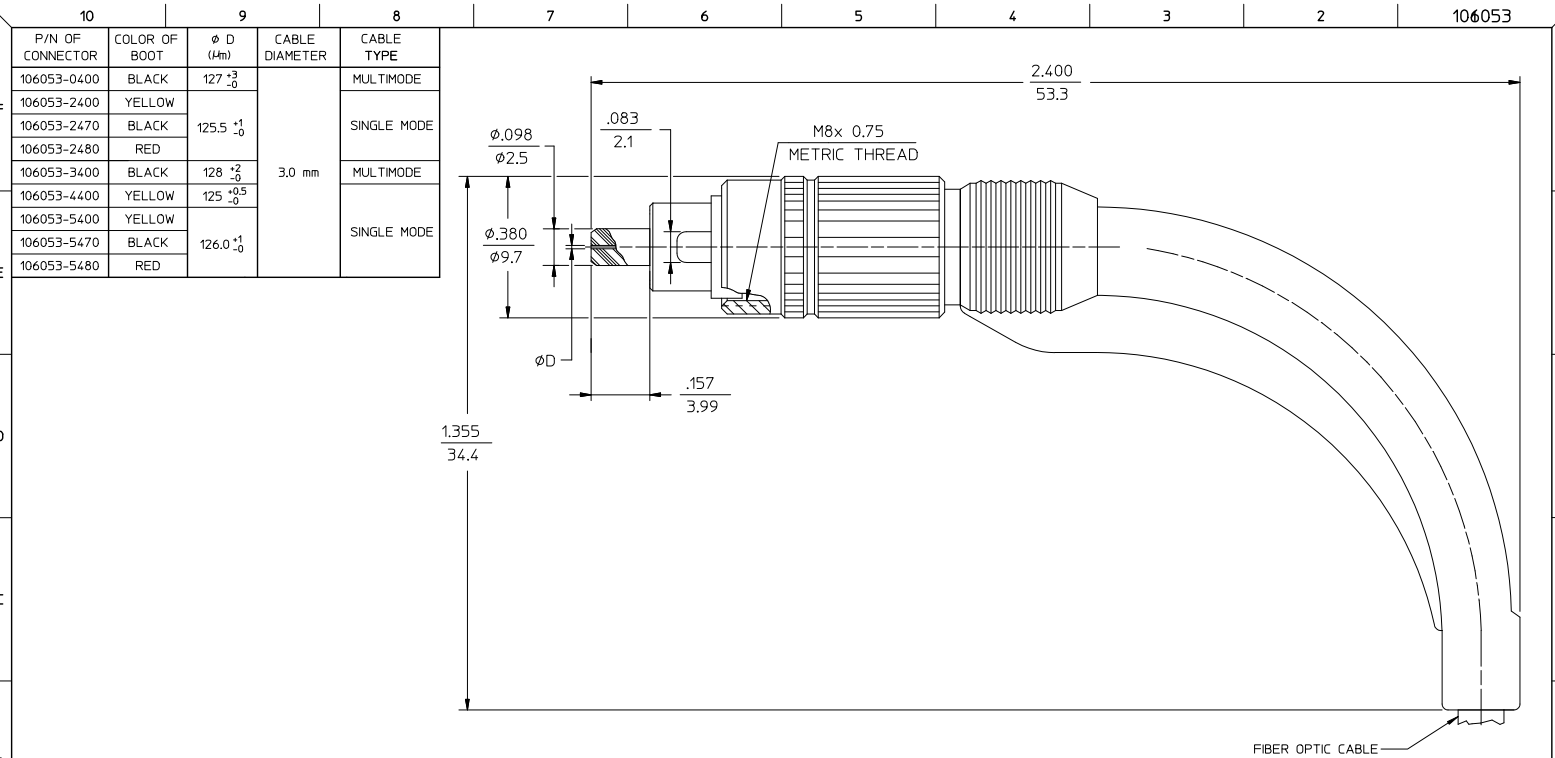
Stocking Distributor

Click to view price, real time Inventory, Delivery & Lifecycle Information:

[Molex Connector Corporation](#)  
[1060534400](#)

For any questions, you can email us directly:

[sales@integrated-circuit.com](mailto:sales@integrated-circuit.com)



P/N OF CONNECTOR	COLOR OF BOOT	Ø D (Hm)	CABLE DIAMETER	CABLE TYPE
106053-2400	YELLOW	125.5 <sup>+1</sup> <sub>-0</sub>	3.0 mm	SINGLE MODE
106053-2470	BLACK			
106053-2480	RED	128 <sup>+2</sup> <sub>-0</sub>	3.0 mm	MULTIMODE
106053-3400	BLACK			
106053-4400	YELLOW	125 <sup>+0.5</sup> <sub>-0</sub>	3.0 mm	SINGLE MODE
106053-5400	YELLOW	126.0 <sup>+1</sup> <sub>-0</sub>		
106053-5470	BLACK			
106053-5480	RED			

ENTER DESCRIPTION E.C. NO: ME2012-0610 DRAWN: MGHAYERE 2012/06/06 CHKD: [blank] APPR: GUMIN 2012/06/06 REV: A1	QUALITY SYMBOLS ▽=0 ▽=0	GENERAL TOLERANCES (UNLESS SPECIFIED)		DIMENSION STYLE IN/MM		SCALE 4:1	DESIGN UNITS INCH	THIRD ANGLE PROJECTION
		4 PLACES ±	mm	INCH	DATE	TITLE FC CONNECTOR WITH 90D BOOT		
		3 PLACES ±			DRAWN BY PGIBLIN	DATE 2005/10/24		
		2 PLACES ±			CHECKED BY	DATE		
		1 PLACE ±			APPROVED BY	DATE		
		0 PLACE ±			MATERIAL NO.	DATE 2012/03/21		
		ANGULAR ±1/2°		SEE TABLE		DOCUMENT NO. SD-106053-ZZZ0	SHEET NO. 1 OF 1	
		DRAFT WHERE APPLICABLE MUST REMAIN WITHIN DIMENSIONS		SIZE B		THIS DRAWING CONTAINS INFORMATION THAT IS PROPRIETARY TO MOLEX INCORPORATED AND SHOULD NOT BE USED WITHOUT WRITTEN PERMISSION		

NOTE:  
1. DUST CAP INCLUDED, BUT NOT SHOWN.