

Excellent Integrated System Limited

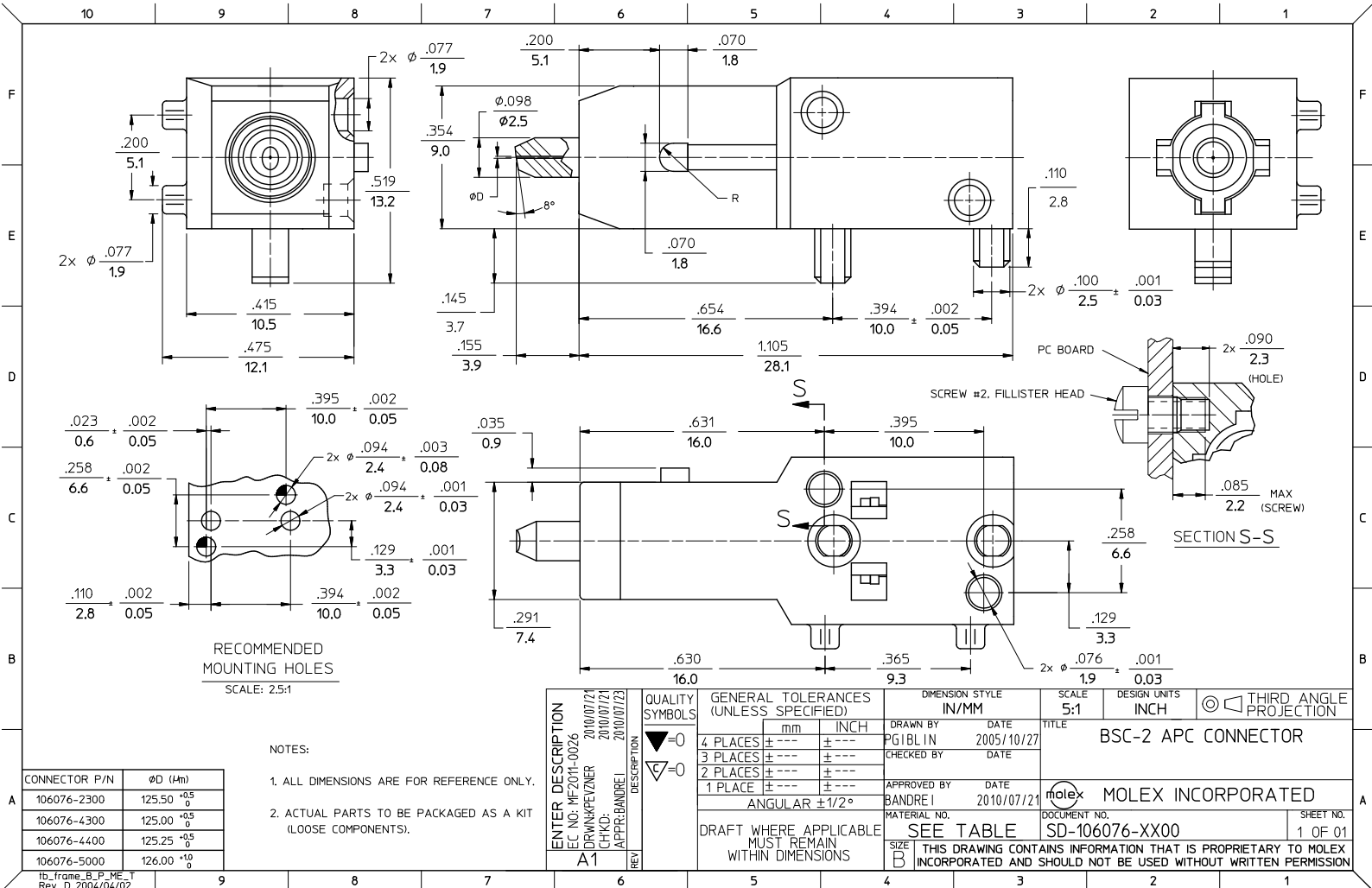
Stocking Distributor

Click to view price, real time Inventory, Delivery & Lifecycle Information:

[Molex Connector Corporation](#)
[1060762300](#)

For any questions, you can email us directly:

sales@integrated-circuit.com



CONNECTOR P/N	ØD (µm)
106076-2300	125.50 ^{+0.5} / ₀
106076-4300	125.00 ^{+0.5} / ₀
106076-4400	125.25 ^{+0.5} / ₀
106076-5000	126.00 ^{+1.0} / ₀

1b_Frame_B_P_ME_T
Rev. D 2004/04/02

ENTER DESCRIPTION E.C. NO: ME2011-0026 DRAWN BY: ZHANGPEIZHNER CHKD: CHENYU APPR: BANDREI	QUALITY SYMBOLS ▽=0 ▽=0	GENERAL TOLERANCES (UNLESS SPECIFIED)		DIMENSION STYLE		SCALE	DESIGN UNITS	THIRD ANGLE PROJECTION
		mm	INCH	IN/MM	DATE	INCH		
A1	REV	4 PLACES	± .005	± .0004	DRAWN BY	PGIBLIN	DATE	2005/10/27
		3 PLACES	± .005	± .0004	CHECKED BY		DATE	
		2 PLACES	± .005	± .0004	APPROVED BY	BANDREI	DATE	2010/07/21
		1 PLACE	± .005	± .0004	MATERIAL NO.	SEE TABLE	DOCUMENT NO.	SD-106076-XX00
DRAFT WHERE APPLICABLE MUST REMAIN WITHIN DIMENSIONS		ANGULAR ±1/2°		SIZE		THIS DRAWING CONTAINS INFORMATION THAT IS PROPRIETARY TO MOLEX INCORPORATED AND SHOULD NOT BE USED WITHOUT WRITTEN PERMISSION		

TITLE: BSC-2 APC CONNECTOR

MOLEX INCORPORATED

SHEET NO. 1 OF 01