

## Excellent Integrated System Limited

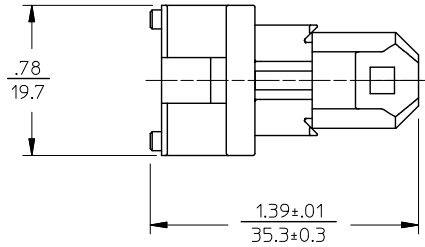
Stocking Distributor

Click to view price, real time Inventory, Delivery & Lifecycle Information:

[Molex Connector Corporation](#)  
[1060865200](#)

For any questions, you can email us directly:

[sales@integrated-circuit.com](mailto:sales@integrated-circuit.com)



NOTE:

1. SCREWS NOT SHOWN.
2. POLYBAG TO BE LABELED WITH P/N AND 10 DIGIT SAP #.
3. PARTS TO BE SEALED IN INDIVIDUAL POLYBAG.
4. FOR ADDITIONAL BMTF SYSTEM DATA SEE DRWG SD-106186-1000.

ENTER DESCRIPTION EC NO: MF2006-0754 DRAWN: KPEVZNER CHKD: 2006/05/16 APPR: IGUMIN 2006/05/16	DESCRIPTION REV	QUALITY SYMBOLS ▽=0 ▽=0	GENERAL TOLERANCES (UNLESS SPECIFIED)		DIMENSION STYLE IN/MM		SCALE 1.5:1	DESIGN UNITS INCH	THIRD ANGLE PROJECTION			
				mm	INCH	DRAWN BY KP	DATE 2006/05/16	TITLE SINGLE POSITION BMTF DAUGHTER BOARD PRESS-FIT PARTS KIT				
			4 PLACES ± ---	± ---	± ---	CHECKED BY	DATE					
			3 PLACES ± ---	± ---	± ---	APPROVED BY ILG		DATE 2006/05/16	MATERIAL NO. 1060865200 DOCUMENT NO. SD-106086-5200 SHEET NO. 1 OF 01			
			2 PLACES ± ---	± ---	± ---	ANGULAR ±1/2°						
1 PLACE ± ---	± ---	± ---	DRAFT WHERE APPLICABLE MUST REMAIN WITHIN DIMENSIONS			MATERIAL NO. 1060865200 DOCUMENT NO. SD-106086-5200 SHEET NO. 1 OF 01						