

## Excellent Integrated System Limited

Stocking Distributor

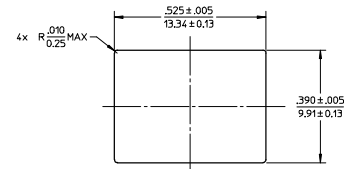
Click to view price, real time Inventory, Delivery & Lifecycle Information:

[Molex Connector Corporation](#)  
[1061271421](#)

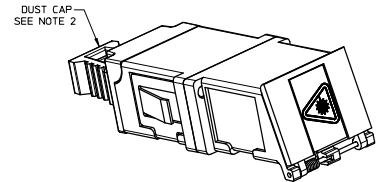
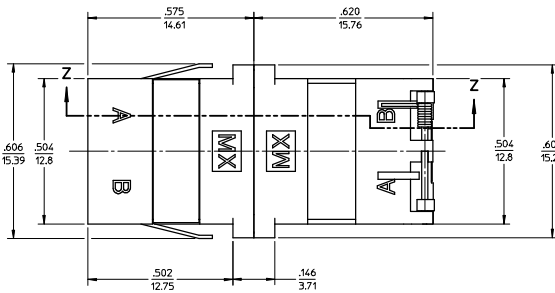
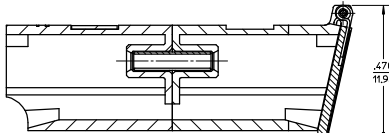
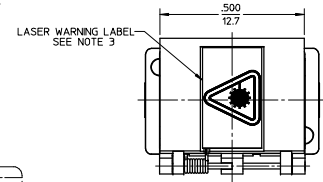
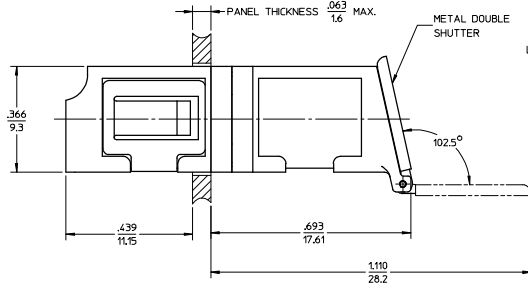
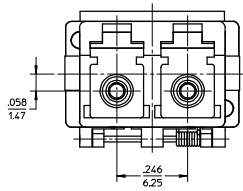
For any questions, you can email us directly:

[sales@integrated-circuit.com](mailto:sales@integrated-circuit.com)

LC ADAPTER P/N	COLOR	SPLIT SLEEVE MATERIAL
106127-1407	BLUE	ZR
106127-1408	BEIGE	PH. BRONZE
106127-1421	GREEN	ZR



RECOMMENDED MOUNTING CUTOUT  
PANEL THICKNESS .063"/1.6 mm MAX.



ISO VIEW  
SCALE 3:1

- NOTES:
1. ALL DIMENSIONS ARE FOR REFERENCE.
  2. DUST CAP SHOWN IN ISO VIEW ONLY.
  3. P/N 106127-1403 SHALL BE BULK PACKED IN QUANTITY OF 100 PCS.
  4. FOR P/N 106127-1404 LASER WARNING LABEL IS SUPPLIED UNATTACHED WITH ADAPTER AND SHALL BE INSTALLED BY CUSTOMER.

ENTER DESCRIPTION EC NO: MF2008-0525 DRAWN: IGMJIN 2008/02/13 CHKD: IGMJIN 2008/02/13 APPR: IGMJIN 2008/02/13 A1	QUALITY SYMBOLS ▽=0 ▽=0	GENERAL TOLERANCES (UNLESS SPECIFIED)		DIMENSION STYLE IN/MM		SCALE 4:1	DESIGN UNITS INCH	THIRD ANGLE PROJECTION	
		4 PLACES ± --- ± --- 3 PLACES ± --- ± --- 2 PLACES ± --- ± --- 1 PLACE ± --- ± --- ANGULAR ± --- °	DRAWN BY IGMJIN	DATE 2008/02/13	CHECKED BY IGMJIN	DATE 2008/02/13	APPROVED BY IGMJIN	DATE 2008/02/13	TITLE LC DUPLEX ADAPTER, METAL DOUBLE SHUTTER SMALL FLANGE, SNAP MOUNT
DRAFT WHERE APPLICABLE MUST REMAIN WITHIN DIMENSIONS	MATERIAL NO. SEE TABLE	DOCUMENT NO. SD-106127-14XX	THIS DRAWING CONTAINS INFORMATION THAT IS PROPRIETARY TO MOLEX INCORPORATED AND SHOULD NOT BE USED WITHOUT WRITTEN PERMISSION						SHEET NO. 1 OF 1