

## Excellent Integrated System Limited

Stocking Distributor

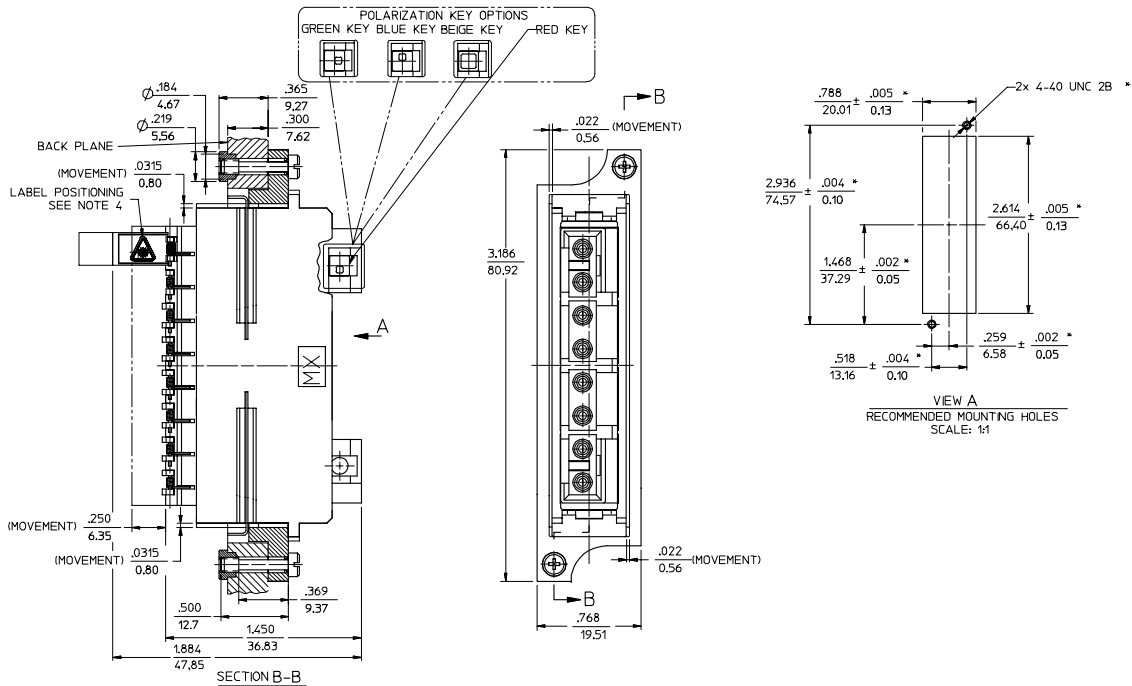
Click to view price, real time Inventory, Delivery & Lifecycle Information:

[Molex Connector Corporation](#)  
[1061462100](#)

For any questions, you can email us directly:

[sales@integrated-circuit.com](mailto:sales@integrated-circuit.com)

BLC ADAPTER SPLIT SLEEVE P/N	SLEEVE MATERIAL	COLOR
106146-2200	Ph, Bronze	BLACK
106146-2100	Zr	GREEN
106146-2500		GREEN



- NOTES:
1. ALL DIM ARE FOR REFERENCE ONLY, EXCEPT WHEN MARKED WITH (M).
  2. POLARIZATION KEYS AND LABELS ARE PACKED UNASSEMBLED WITH ADAPTER ASSEMBLY IN POLY BAG.
  3. ADHESIVE LABELS TO BE POSITIONED ON LC DOORS BY USER. THE ORIENTATION OF THE LABELS SHOULD BE SUCH THAT THE LASER WARNING SYMBOL IS EASILY IDENTIFIED.

ENTER DESCRIPTION IEC NO: MF-2006-0307 DRAWN BY: PG1BLIN CHKD: PG1BLIN APPR: IGMIN DATE: 2005/10/21 DATE: 2005/10/21	QUALITY SYMBOLS 	GENERAL TOLERANCES (UNLESS SPECIFIED)		DIMENSION STYLE IN/MM	SCALE 2:1	DESIGN UNITS INCH	THIRD ANGLE PROJECTION
		4 PLACES ± --- ± --- 3 PLACES ± --- ± --- 2 PLACES ± --- ± --- 1 PLACE ± --- ± --- ANGULAR ±1/2°	mm INCH	DRAWN BY PG1BLIN	DATE 2005/10/21	TITLE BLC ADAPTER ASSEMBLY (8 POSITION)	
DRAFT WHERE APPLICABLE MUST REMAIN WITHIN DIMENSIONS		APPROVED BY 	DATE	MATERIAL NO. SEE TABLE	DOCUMENT NO. SD-106146-2X00	MOLEX INCORPORATED	SHEET NO. 1 OF 01
THIS DRAWING CONTAINS INFORMATION THAT IS PROPRIETARY TO MOLEX INCORPORATED AND SHOULD NOT BE USED WITHOUT WRITTEN PERMISSION							