

Excellent Integrated System Limited

Stocking Distributor

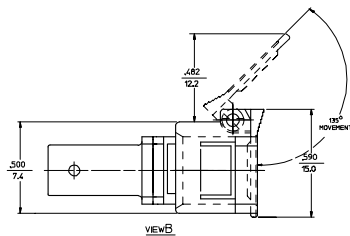
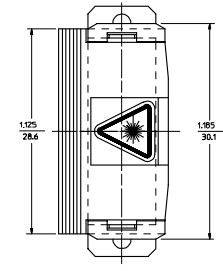
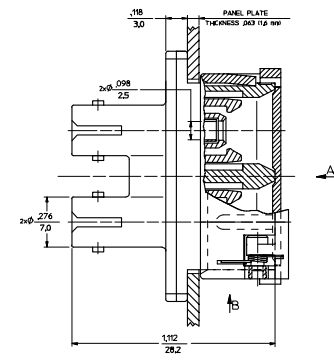
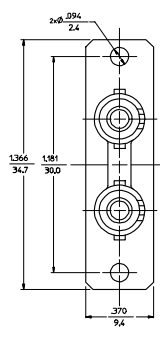
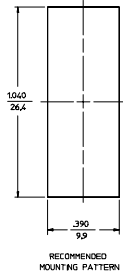
Click to view price, real time Inventory, Delivery & Lifecycle Information:

[Molex Connector Corporation](#)
[1061671510](#)

For any questions, you can email us directly:

sales@integrated-circuit.com

ADAPTER		SC-ST DUPLEX ADAPTER W/O MOUNTING PLATE		SHIELD ASSEMBLY	
P/N	P/N	COLOR	SLEEVE MATERIAL	P/N	COLOR
106166-050	106166-050	BLUE	PHOSPHOR BRONZE	106166-0200	BLUE
106167-050	106167-050	BEGE	PHOSPHOR BRONZE	106166-0210	BEGE
106166-030	106166-030	BLACK	PHOSPHOR BRONZE	106166-0230	BLACK



NOTES
1. LABEL MUST BE INSTALLED AND ORIENTED BY CUSTOMER (SEE VIEW A).
2. DUST CAPS ARE NOT SHOWN, BUT INCLUDED.

ENTER DESCRIPTION E.C. NO. 1061671510 DRAWN BY: J. BILLYN CHECKED BY: J. BILLYN APPROVED BY: J. BILLYN DATE: 2005/11/29 SHEET NO. 1 OF 01	QUALITY SYMBOLS ◻=0 ◻=0	GENERAL TOLERANCES (UNLESS SPECIFIED)		DIMENSION STYLE	SCALE	DESIGN UNITS	THIRD ANGLE PROJECTION	
				IN/MM	4:1	INCH		
		4 PLACES ±---	±---	RPA1 F1 C1	2005/10/11	TITLE		
		3 PLACES ±---	±---	CHECKED BY	DATE	SC-ST DUPLEX ADAPTER WITH SHIELD		
2 PLACES ±---	±---	APPROVED BY	DATE	MOLEX INCORPORATED				
1 PLACE ±---	±---	DRAFT WHERE APPLICABLE MUST REMAIN WITHIN DIMENSIONS		MATERIAL NO.	DOCUMENT NO.	SHEET NO.		
				SEE TABLE	SD-10616X-15X0	1 OF 01		
SET THIS DRAWING CONTAINS INFORMATION THAT IS PROPRIETARY TO MOLEX INCORPORATED AND SHOULD NOT BE USED WITHOUT WRITTEN PERMISSION.								