

Excellent Integrated System Limited

Stocking Distributor

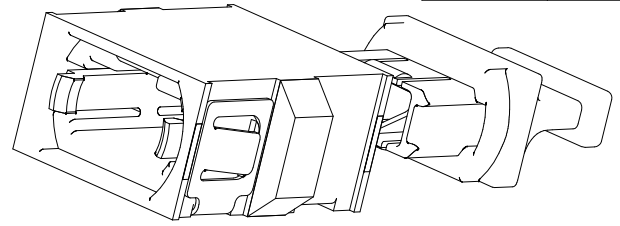
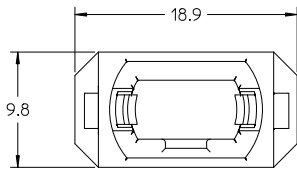
Click to view price, real time Inventory, Delivery & Lifecycle Information:

[Molex Connector Corporation](#)
[1061810007](#)

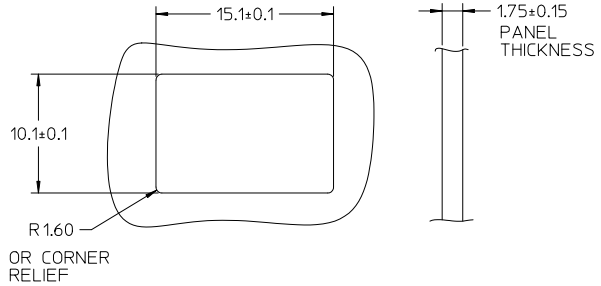
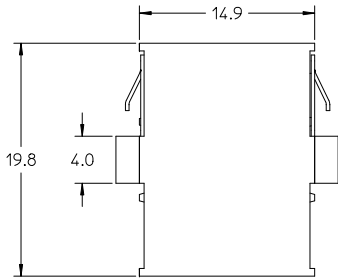
For any questions, you can email us directly:
sales@integrated-circuit.com

10 9 8 7 6 5 4 3 2 106181

KEY ORIENTATION OPPOSED



TWO DUST CAPS ARE PROVIDED



RECOMMENDED MOUNTING CUTOUT

NOTE:

MATERIALS:
 ADAPTER BODY - POLYETHERIMIDE, BLACK
 FLAMMABILITY - UL94 V-0
 SPRING CLIP - STAINLESS STEEL
 DUST PLUG - POLYCARBONATE:
 SURFACE RESISTIVITY - <1E12 ohm/sq
 TML - <1%
 FLAMMABILITY - UL94 V-0

ENTER DESCRIPTION EC NO: ME2012-0454 DRAWN: BEONYAK CHKD: APPR: GUMIN 2012/03/20 2012/03/23 REV B1	QUALITY SYMBOLS	GENERAL TOLERANCES (UNLESS SPECIFIED)	DIMENSION STYLE	SCALE	DESIGN UNITS	THIRD ANGLE PROJECTION															
	$\nabla=0$ $\sphericalangle=0$	<table border="1"> <thead> <tr> <th></th> <th>mm</th> <th>INCH</th> </tr> </thead> <tbody> <tr> <td>4 PLACES</td> <td>±---</td> <td>±---</td> </tr> <tr> <td>3 PLACES</td> <td>±---</td> <td>±---</td> </tr> <tr> <td>2 PLACES</td> <td>±---</td> <td>±---</td> </tr> <tr> <td>1 PLACE</td> <td>±---</td> <td>±---</td> </tr> </tbody> </table>		mm	INCH	4 PLACES	±---	±---	3 PLACES	±---	±---	2 PLACES	±---	±---	1 PLACE	±---	±---	MM ONLY	---	INCH	
		mm	INCH																		
	4 PLACES	±---	±---																		
3 PLACES	±---	±---																			
2 PLACES	±---	±---																			
1 PLACE	±---	±---																			
	ANGULAR ±1/2°	DRAWN BY KP	DATE 2003/07/10	TITLE MTP ADAPTER, REDUCED FLANGE																	
	DRAFT WHERE APPLICABLE MUST REMAIN WITHIN DIMENSIONS	CHECKED BY	DATE	APPROVED BY ILG																	
				DATE 2003/07/10																	
				MATERIAL NO. 1061810007																	
				DOCUMENT NO. SD-106181-0007																	
				SHEET NO. 1 OF 1																	
				THIS DRAWING CONTAINS INFORMATION THAT IS PROPRIETARY TO MOLEX INCORPORATED AND SHOULD NOT BE USED WITHOUT WRITTEN PERMISSION																	

9 8 7 6 5 4 3 2 1