

## **Excellent Integrated System Limited**

Stocking Distributor

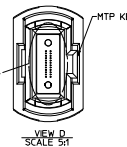
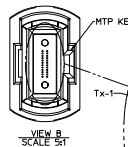
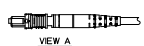
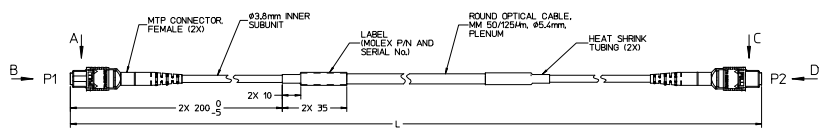
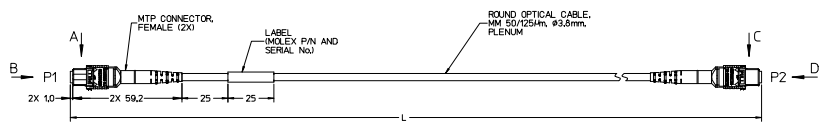
Click to view price, real time Inventory, Delivery & Lifecycle Information:

[Molex Connector Corporation](#)  
[1062840010](#)

For any questions, you can email us directly:

[sales@integrated-circuit.com](mailto:sales@integrated-circuit.com)

CXP CABLE ASSEMBLY PART NUMBER	OVERALL LENGTH L (mm)	CABLE DIA. (mm)	CABLE TYPE	
				STANDARD BANDWIDTH (OM2) (ORANGE CABLE)
106284-0001	10 ±0.2/-0		2x FIBER ROUND CABLE, SINGLE JACKET	
106284-0051	TBD	TBD		
106284-0002	106284-1002	106284-7002		2.0 ±0.2/-0
106284-0003	106284-1003	106284-7003		3.0 ±0.2/-0
106284-0004	106284-1004	106284-7004		4.0 ±0.2/-0
106284-0005	106284-1005	106284-7005		5.0 ±0.2/-0
106284-0006	106284-1006	106284-7006		6.0 ±0.2/-0
106284-0008	106284-1008	106284-7008		8.0 ±0.2/-0
106284-0010	106284-1010	106284-7010		10.0 ±0.3/-0
106284-0012	106284-1012	106284-7012		12.0 ±0.3/-0
106284-0015	106284-1015	106284-7015	15.0 ±0.3/-0	
106284-0020	106284-1020	106284-7020	20.0 ±0.4/-0	
106284-0025	106284-1025	106284-7025	25.0 ±0.5/-0	
106284-0030	106284-1030	106284-7030	30.0 ±0.6/-0	
106284-0035	106284-1035	106284-7035	35.0 ±0.7/-0	
106284-0040	106284-1040	106284-7040	40.0 ±0.8/-0	
106284-0045	106284-1045	106284-7045	45.0 ±0.9/-0	
106284-0050	106284-1050	106284-7050	50.0 ±1.0/-0	
106284-0055	106284-1055	106284-7055	55.0 ±1.1/-0	
106284-0060	106284-1060	106284-7060	60.0 ±1.2/-0	
106284-0065	106284-1065	106284-7065	65.0 ±1.3/-0	
106284-0070	106284-1070	106284-7070	70.0 ±1.4/-0	
106284-0075	106284-1075	106284-7075	75.0 ±1.5/-0	
106284-0080	106284-1080	106284-7080	80.0 ±1.6/-0	
106284-0085	106284-1085	106284-7085	85.0 ±1.7/-0	
106284-0090	106284-1090	106284-7090	90.0 ±1.8/-0	
106284-0095	106284-1095	106284-7095	95.0 ±1.9/-0	
106284-0100	106284-1100	106284-7100	100.0 ±2.0/-0	
106284-0150	106284-1150	106284-7150	150.0 ±3.0/-0	
TBD	TBD	106284-7200	200.0 ±4.0/-0	
TBD	TBD	106284-7250	250.0 ±5.0/-0	
TBD	TBD	106284-7300	300.0 ±6.0/-0	



FROM P1 TO P2	
Rc-1	Tx-1
Rc-2	Tx-2
Rc-3	Tx-3
Rc-4	Tx-4
Rc-5	Tx-5
Rc-6	Tx-6
Rc-7	Tx-7
Rc-8	Tx-8
Rc-9	Tx-9
Rc-10	Tx-10
Rc-11	Tx-11
Rc-12	Tx-12
Rc-1	Rx-1
Tx-2	Rc-2
Tx-3	Rc-3
Tx-4	Rc-4
Tx-5	Rc-5
Tx-6	Rc-6
Tx-7	Rc-7
Tx-8	Rc-8
Tx-9	Rc-9
Tx-10	Rc-10
Tx-11	Rc-11
Tx-12	Rc-12

NOTE:  
 CABLE ASSEMBLY SPECIFICATIONS:  
 OPTICAL PROPERTIES  
 FIBER TYPE MULTIMODE 50/125 4th BEND-INSENSITIVE  
 CONNECTOR INSERTION LOSS (MAX) 1.0 dB  
 CABLE ATTENUATION (MAX) 3.5/1.2 dB/km AT 850/1300 nm  
 BANDWIDTH SEE TABLE 1  
 ENVIRONMENTAL PROPERTIES  
 CONNECTOR MATERIALS UL94 V-0  
 CABLE FLAMMABILITY RATING PLENUM OFNP (NFPA 262/UL 910)  
 OPERATING TEMPERATURE RANGE -0°C TO +70°C  
 MECHANICAL PROPERTIES  
 FIBER COUNT 24F - 12 Rx / 12 Tx  
 CABLE MIN. BEND RADIUS  
 SHORT TERM 57 mm - SINGLE JACKET  
 89 mm - DUAL JACKET  
 LONG TERM 20 mm - SINGLE JACKET/INNER SUBUNIT OF DUAL JACKETED CABLE  
 57 mm - DUAL JACKET  
 NO LOAD 12.5 mm - SINGLE JACKET CABLE/INNER SUBUNIT OF DUAL JACKETED CABLE  
 COMPRESSIVE FORCE >3.5 N/mm - SINGLE JACKET CABLE/INNER SUBUNIT OF DUAL JACKETED CABLE

TABLE 1

FIBER TYPE	OVERFILLED LAUNCH BANDWIDTH, MIN. (MHz-km)		1 GIGABIT ETHERNET LINK DISTANCE, MIN. (m)		10 GIGABIT ETHERNET LINK DISTANCE, MIN. (m)		40 & 100 GIGABIT ETHERNET LINK DISTANCE, MIN. (m)		EFFECTIVE MODAL BANDWIDTH (MHz-km)
	850 nm	1300 nm	850 nm	1300 nm	850 nm	1300 nm	850 nm	1300 nm	
STANDARD BANDWIDTH (OM2)	500	500	600	---	86	---	---	---	---
HIGH BANDWIDTH (OM3)	1500	500	1000	---	300	---	100	---	2000
HIGH BANDWIDTH (OM4)	3500	550	1040	---	550	---	50	---	4700

ENTER DESCRIPTION: EC NO. M2015-0471, DATE: 2015/02/09, DRAWN: IGUMIN, CHECK: IGUMIN, APPROVED: IGUMIN, REVISION: 1

QUALITY SYMBOLS: 4 PLACES ±0.1, 3 PLACES ±0.2, 2 PLACES ±0.3, 1 PLACE ±0.4

GENERAL TOLERANCES (UNLESS SPECIFIED): DIMENSIONS IN mm, DIMENSIONS IN INCH, ANGULAR ±1/2°

DRAFT WHERE APPLICABLE MUST REMAIN WITHIN DIMENSIONS

THIS DRAWING CONTAINS INFORMATION THAT IS PROPRIETARY TO MOLEX INCORPORATED AND SHOULD NOT BE USED WITHOUT WRITTEN PERMISSION

MOLEX CXP OPTICAL CABLE ASSEMBLY

MOLEX

DOCUMENT NO. SD-106284-0001

SHEET NO. 1 OF 1