

Excellent Integrated System Limited

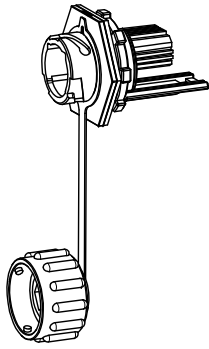
Stocking Distributor

Click to view price, real time Inventory, Delivery & Lifecycle Information:

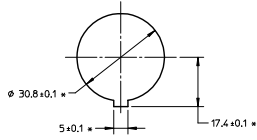
[Molex Connector Corporation](#)
[1065013000](#)

For any questions, you can email us directly:
sales@integrated-circuit.com

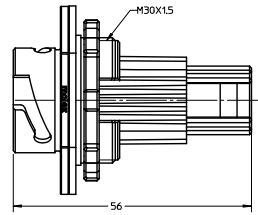
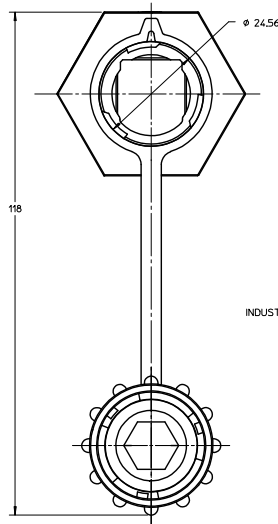
13 12 11 10 9 8 7 6 5 4 3 2 1



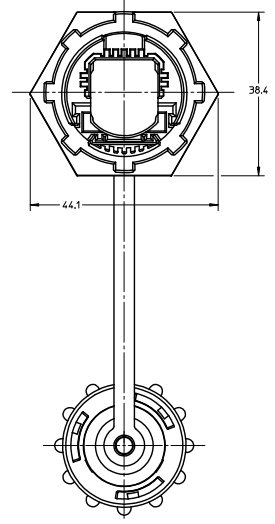
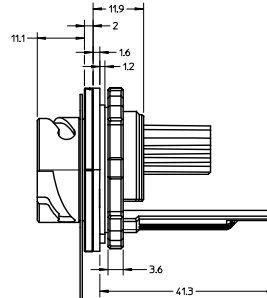
ISOMETRIC VIEW
SCALE 1:1



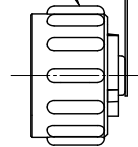
RECOMMENDED PANEL THICKNESS: 1.6mm-6.4mm
RECOMMENDED MOUNTING CUT-OUT
SCALE 1:1



TOP VIEW
DUST COVER IS NOT SHOWN



INDUSTRIAL DUST COVER



NOTE:
1. ALL DIMENSIONS ARE FOR REFERENCE ONLY.
2. ADAPTER ARE PACKED INDIVIDUALLY IN SELF SEALING BUBBLE BAG.
BUBBLE BAG NOT SHOWN.

ENTER DESCRIPTION EC NO: MF2009-0482 DRWN: JSZEWZYK 2009/03/23 CHKD: 2009/03/23 APPR: LGMNIN 2009/03/23 REV	QUALITY SYMBOLS ▽=0 ▽=0	GENERAL TOLERANCES (UNLESS SPECIFIED)		DIMENSION STYLE MM ONLY		SCALE 1.5:1	DESIGN UNITS METRIC	THIRD ANGLE PROJECTION	
		4 PLACES ± --- ± ---	3 PLACES ± --- ± ---	2 PLACES ± --- ± ---	1 PLACE ± --- ± ---	ANGULAR ± 1/2°	DRAWN BY BG	DATE 12/01/05	TITLE RECEPTACLE ASSEMBLY INDUSTRIAL SFP
DRAFT WHERE APPLICABLE MUST REMAIN WITHIN DIMENSIONS		MATERIAL NO. 1065013000		DOCUMENT NO. SD-106501-3000		MOLEX INCORPORATED			
		SIZE C		THIS DRAWING CONTAINS INFORMATION THAT IS PROPRIETARY TO MOLEX INCORPORATED AND SHOULD NOT BE USED WITHOUT WRITTEN PERMISSION					SHEET NO. 1 OF 1

12 11 10 9 8 7 6 5 4 3 2 1