

## Excellent Integrated System Limited

Stocking Distributor

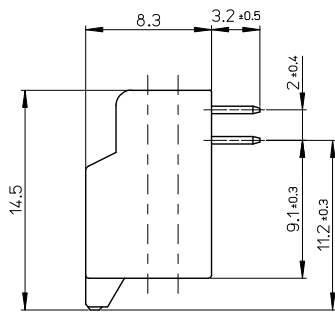
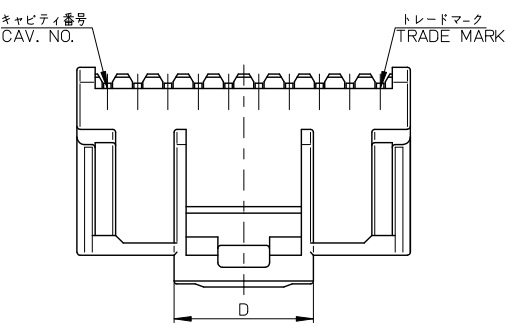
Click to view price, real time Inventory, Delivery & Lifecycle Information:

[Molex Connector Corporation](#)  
[5018763040](#)

For any questions, you can email us directly:

[sales@integrated-circuit.com](mailto:sales@integrated-circuit.com)

10 9 8 7 6 5 4 3 2 1



**注記 NOTES**

1. 材料 MATERIAL  
ピン : 黄銅, ニッケル下地鍍メッキ  
PIN : BRASS, REFLOWED TIN OVER COPPER PLATED  
ハウジング : 66ナイロン(ガラス入り), UL94V-0  
HOUSING : 66NYLON (G.F.), UL94V-0
2. 嵌合相手 MATES WITH

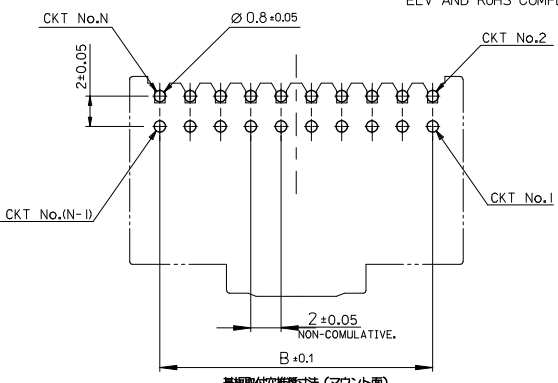
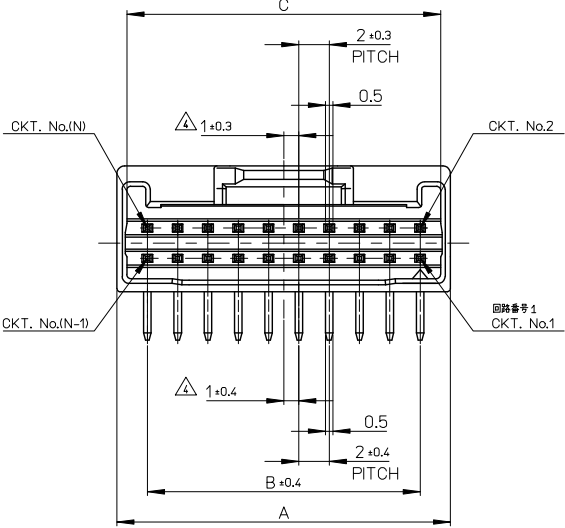
REC. CRIMP HOUSING	501646 SERIES
REC. CRIMP TERMINAL	
AWG #22-26 TIN PLATING	501647 SERIES
AWG #26-28 TIN PLATING	501648 SERIES

△ 製品番号 MATERIAL NO.  
**501876-\*\*4\***  
極数 CIRCUIT SIZE 色 COLOR

△ (全極数/2) = 偶数の場合に適用。  
APPLY FOR (CIRCUIT/2)=EVEN

5. ELV 及び RoHS 適合品  
ELV AND ROHS COMPLIANT.

ナチュラル NATURAL	0
黒 BLACK	1
赤 RED	2
黄 YELLOW	3
青 BLUE	4
桃 PINK	5
緑 GREEN	6
茶 BROWN	7
橙 ORANGE	8
紫 VIOLET	9



基板取付の推奨寸法 (マウント面)  
RECOMMENDED P.C.BOARD HOLE DIMENSION (MOUNTING SIDE)  
(1=1.2~1.6)

9.2	40.7	38	42	501876-404*	40
9.2	38.7	36	40	-384*	38
9.2	36.7	34	38	-364*	36
9.2	34.7	32	36	-344*	34
9.2	32.7	30	34	-324*	32
9.2	30.7	28	32	-304*	30
9.2	28.7	26	30	-284*	28
9.2	26.7	24	28	-264*	26
9.2	24.7	22	26	-244*	24
9.2	22.7	20	24	-224*	22
9.2	20.7	18	22	-204*	20
9.2	18.7	16	20	-184*	18
9.2	16.7	14	18	-164*	16
9.2	14.7	12	16	-144*	14
9.2	12.7	10	14	-124*	12
7.3	10.7	8	12	501876-104*	10

REVISED EC NO: J2017-0032 DRAWN BY: 2016/07/04 CHKD: SKIYAMA APPR: IKANEKO 2016/07/12	GENERAL TOLERANCES (UNLESS SPECIFIED)			DIMENSION STYLE		SCALE	DESIGN UNITS		TITLE IGRID 2.0MM W/B DUAL DIP PLUG ASSY RA <b>molex</b> DOCUMENT NO. SD-501876-001 SHEET NO. 1 OF 1
	0.25	UNDER	UNDER	±0.03	MM ONLY	4:1	METRIC	THIRD ANGLE PROJECTION	
	0.25	OVER	0.5	UNDER	±0.05	DRAWN BY	DATE		
	0.5	OVER	1.0	UNDER	±0.1	CHECKED BY	DATE		
	1.0	OVER	10	UNDER	±0.2	ASAKAWA	'05/07/08		
	10	OVER	30	UNDER	±0.25	APPROVED BY	DATE		
30	OVER			±0.3	ICHIKAWA	'05/07/08			
	ANGULAR		±3 °		MATERIAL NO.				
	DRAFT WHERE APPLICABLE MUST REMAIN WITHIN DIMENSIONS			SIZE	THIS DRAWING CONTAINS INFORMATION THAT IS PROPRIETARY TO MOLEX ELECTRONIC TECHNOLOGIES, LLC AND SHOULD NOT BE USED WITHOUT WRITTEN PERMISSION				

9 8 7 6 5 4 3 2 1