

Excellent Integrated System Limited

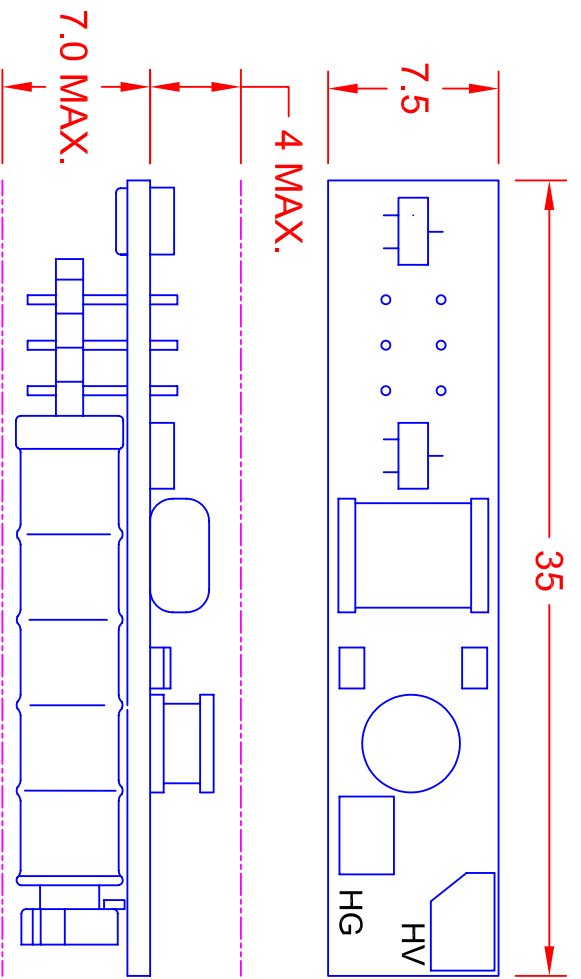
Stocking Distributor

Click to view price, real time Inventory, Delivery & Lifecycle Information:

[JKL Components Corporation](#)
[BXA-12577](#)

For any questions, you can email us directly:

sales@integrated-circuit.com

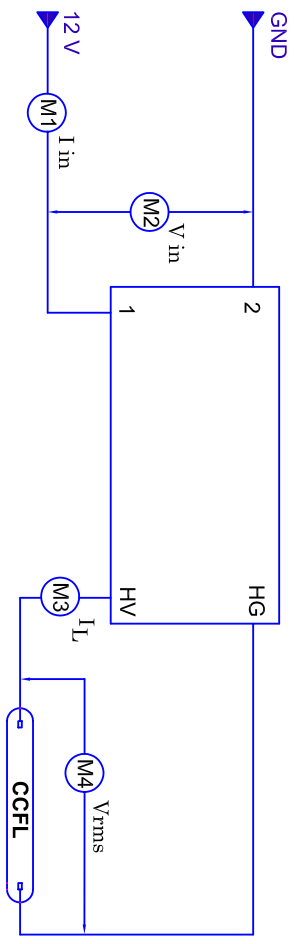
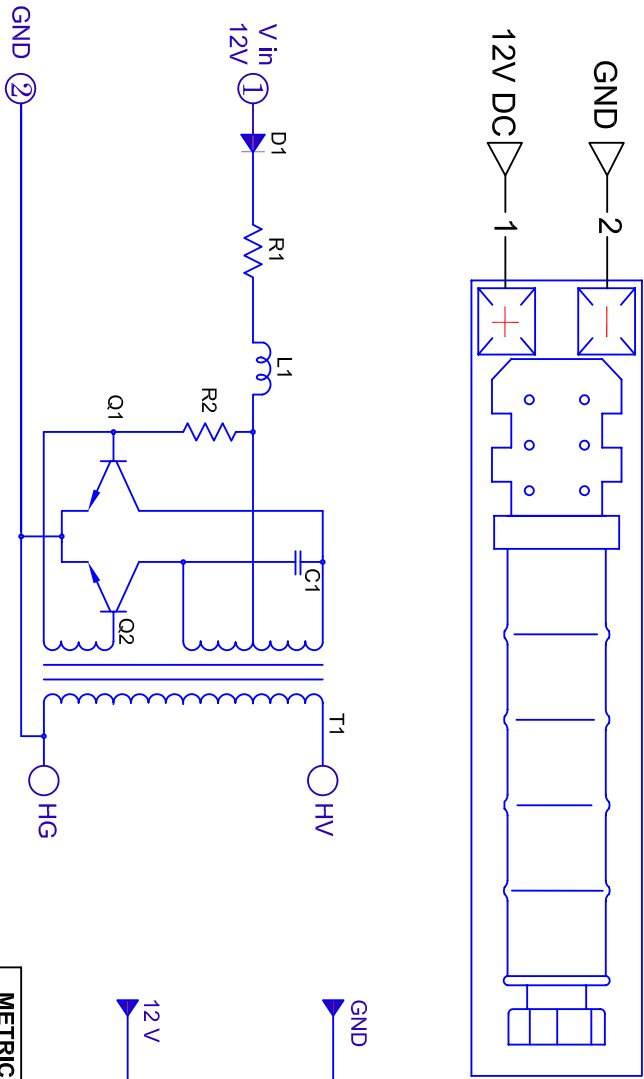


| TOLERANCE | |
|--------------|------|
| L < 20 | ±0.2 |
| 20 ≤ L < 50 | ±0.3 |
| 50 ≤ L < 100 | ±0.4 |
| 100 ≤ L | ±0.5 |

| CHARACTERISTICS | MIN | TYP | MAX |
|---------------------------|------|------|------|
| INPUT VOLTAGE: (vdc) | 10.8 | 12.0 | 15.0 |
| INPUT CURRENT: (mA) | 115 | 135 | 155 |
| OUTPUT VOLTAGE: (Vrms) | - | 800 | - |
| OUTPUT CURRENT (marms) | 3.9 | 4.6 | 5.3 |
| OUTPUT FREQUENCY: (kHz) | 80 | 90 | 100 |
| OPERATING TEMP: (CELSIUS) | 0 | 25 | 50 |

| BOARD PIN # | INPUT |
|-------------|-----------|
| 1 | +V (V in) |
| 2 | V (GND) |
| HV | V OUT |
| HG | OUT GND |

M1 - INPUT CURRENT (I in)
M2 - INPUT VOLTAGE (V in)
M3 - OUTPUT CURRENT (I out)
M4 - OUTPUT VOLTAGE (V out)



NOTE: ROHS COMPLIANT

| | | | | | |
|-----------------------------------|-------------------------------|--------------------------------------|--------------|------------|-------------|
| METRIC | DIMENSIONS ARE IN MILLIMETERS | TOLERANCE UNLESS OTHERWISE SPECIFIED | 1 PL +/- 0.2 | 2 PL +/- 0 | ANGLE +/- 0 |
| THIRD ANGLE PROJECTION | | | | | |
| JKL COMPONENTS CORPORATION | | | | | |
| 12V CCFL POWER SUPPLY | | | | | |
| DRAWN BY | L. WENGSTROM | APPR'D BY | L.R. | DATE | 4/3/07 |
| SCALE | A | SIZE | 55335 | FCGM NO. | BXA-12577 |
| RELEASED DATE | 9/25/01 | REVISION DATE | 4/3/07 | REV. NO. | A |
| MANUAL REVISIONS NOT PERMITTED | | | | | |

| REV. | DESCRIPTION/ECO NO. | DATE |
|------|--------------------------|---------|
| | RELEASED AS CAD DRW. | 9/25/01 |
| A | CHNG PER SUPPLIERS SPEC. | 4/3/07 |
| | | |
| | | |