

## **Excellent Integrated System Limited**

Stocking Distributor

Click to view price, real time Inventory, Delivery & Lifecycle Information:

[Panasonic - BSG](#)  
[NBL-621/DN](#)

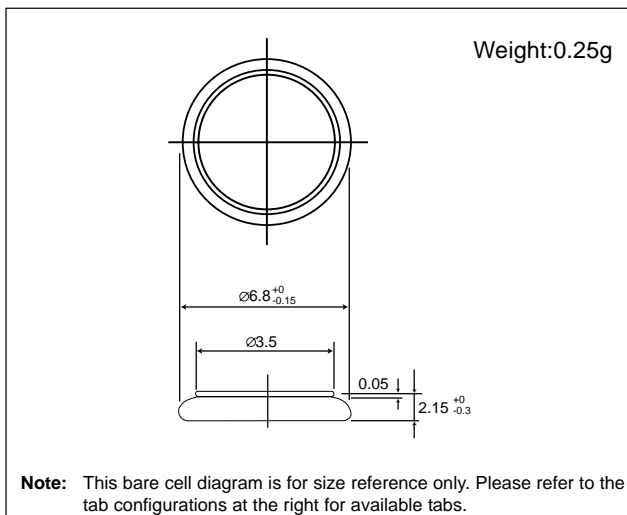
For any questions, you can email us directly:

[sales@integrated-circuit.com](mailto:sales@integrated-circuit.com)

## Niobium-Lithium Rechargeable Batteries (NBL series): Individual Specifications

### NBL621

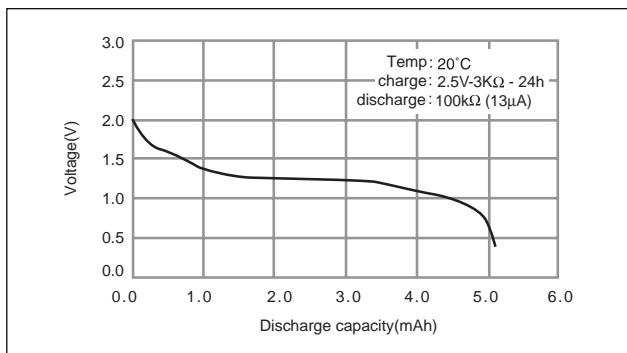
#### ■ Dimensions(mm)



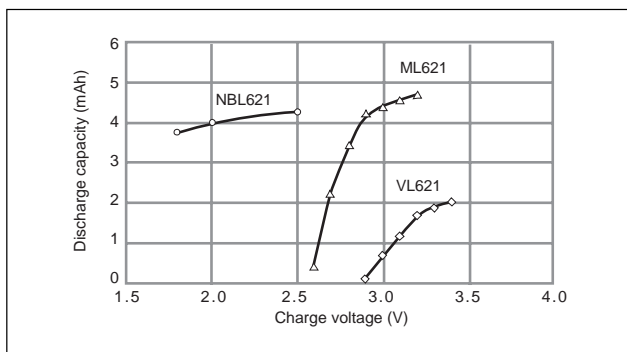
#### ■ Specification

<b>Nominal voltage (V)</b>	2
<b>Nominal capacity (mAh)</b>	4
<b>Continuous standard load (mA)</b>	0.01
<b>Operating temperature (C)</b>	-20 ~ +60

#### ■ Discharge characteristics

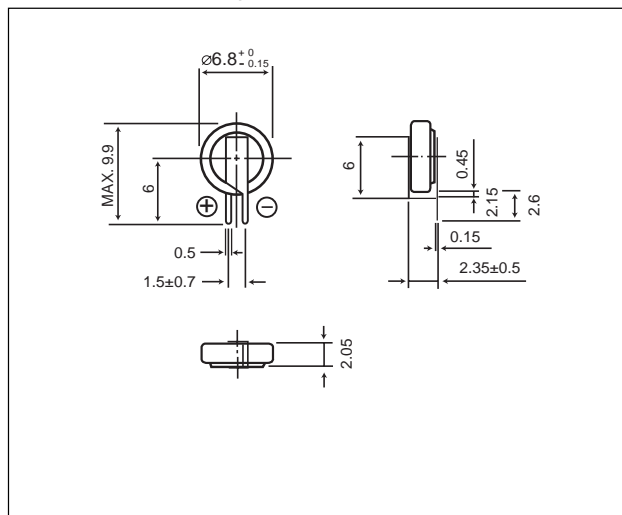


#### ■ Recovered capacity (According to charge voltage)



### NBL621/F9D

#### ■ Available Tab Configuration



#### Notes:

- To ensure proper electrical contact, it is recommended that rechargeable coin cell batteries be used with tabs for PC Board mounting. Please consult Panasonic before planning a design that will use bare coin cells without tabs (e.g. using a holder).
- Please contact Panasonic for requests on custom tab configurations. Minimum order requirements may apply.