

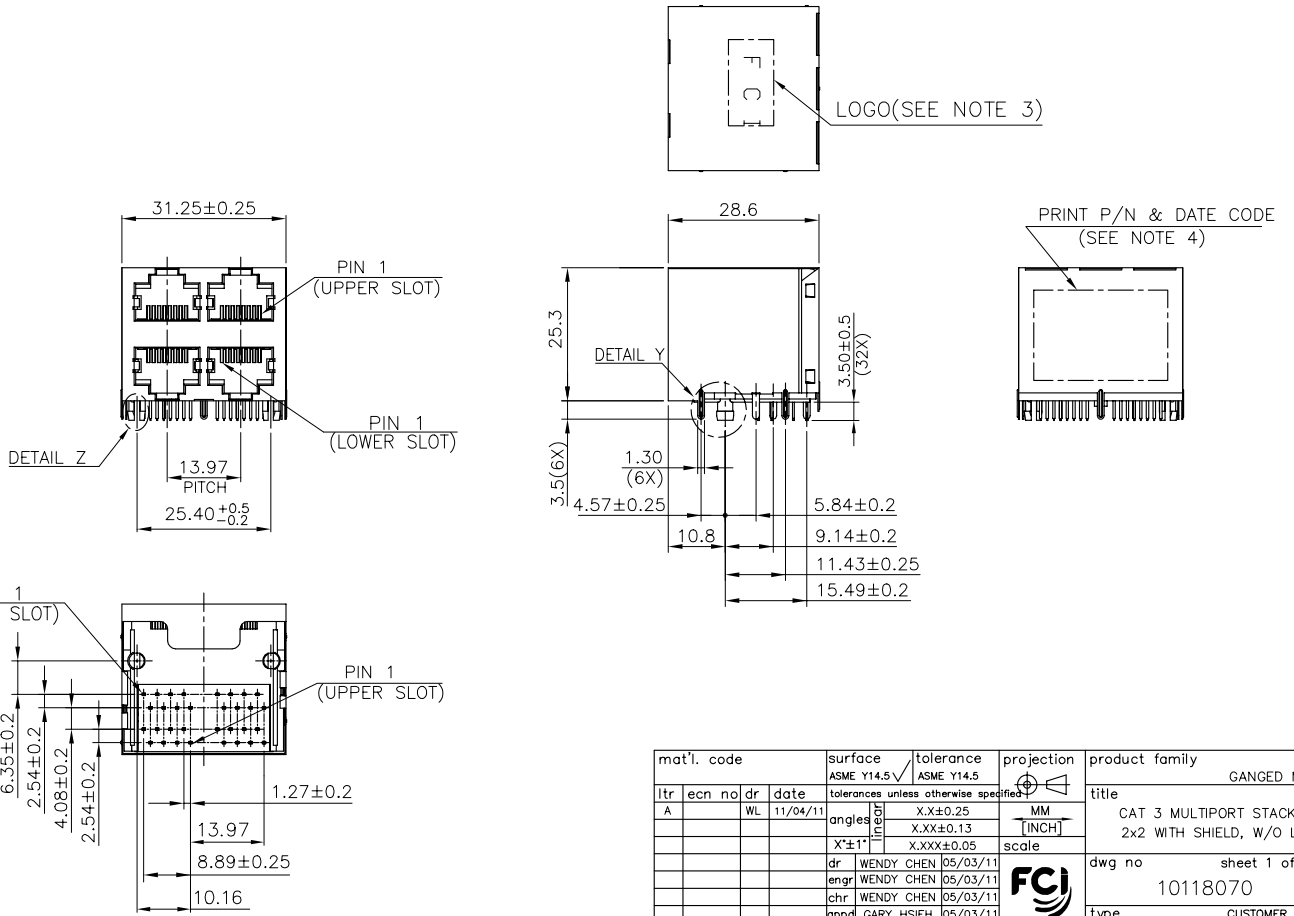
Excellent Integrated System Limited

Stocking Distributor

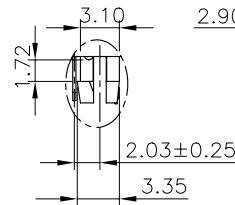
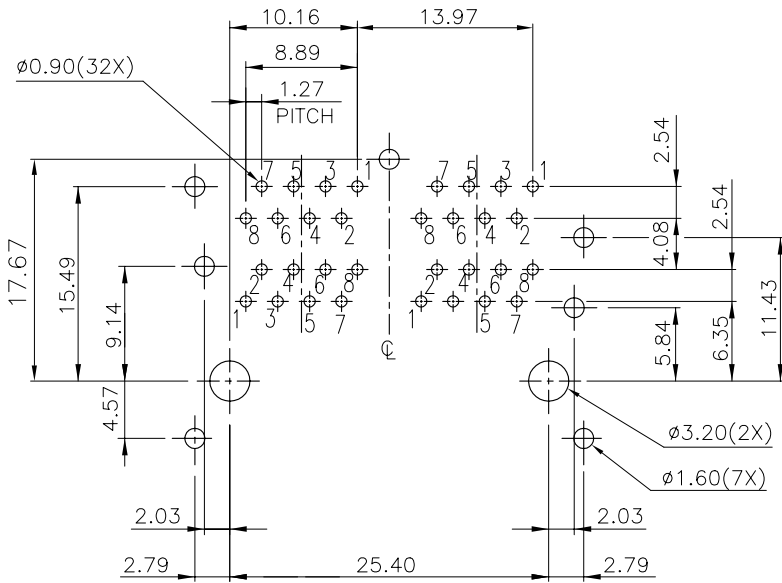
Click to view price, real time Inventory, Delivery & Lifecycle Information:

[FCI](#)
[10118070-500A110LF](#)

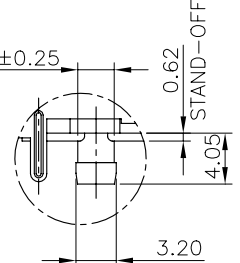
For any questions, you can email us directly:
sales@integrated-circuit.com



mat'l. code	surface ASME Y14.5	tolerance ASME Y14.5	projection	product family GANGED M JACK
ltr	ecn no	dr	date	title CAT 3 MULTIPORT STACKED 2x2 WITH SHIELD, W/O LED
A	WL	11/04/11		dwg no 10118070
				sheet 1 of 3
				size A4
				type CUSTOMER Drawing
sheet index	revision sheet	A 1	A 2	A 3



DETAIL Z
 SCALE 2:1



DETAIL Y
 SCALE 2:1

RECOMMENDED PCB LAYOUT
 RECOMMENDED PCB THICKNESS: 1.6mm
 TOLERANCE: ±0.05mm (TOP VIEW)

mat'l. code	surface ASME Y14.5 ✓ ASME Y14.5	tolerance ASME Y14.5	projection MM [INCH]	product family GANGED M JACK		
ltr	ecn	no	dr	date	tolerances unless otherwise specified	title CAT 3 MULTIPORT STACKED 2x2 WITH SHIELD, W/O LED
A					angles X.X±0.25 X.XX±0.13 X°±1'	scale MM [INCH]
					dr WENDY CHEN 05/03/11	dwg no 10118070
					enr WENDY CHEN 05/03/11	sheet 2 of 3
					chr WENDY CHEN 05/03/11	size A4
					appd GARY HSIEH 05/03/11	type CUSTOMER Drawing
sheet index	revision sheet					

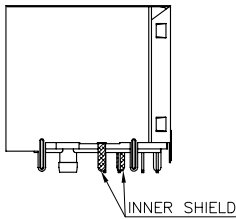
NOTE:

- MATERIAL:**
 HOUSING & INNER HOUSING & COVER:
 HIGH TEMPERATURE THERMOSPLASTIC, UL94V-0, COLOR: BLACK.
 CONTACTS: COPPER ALLOY.
 SHIELD: COPPER ALLOY.
 INNER SHIELD: COPPER ALLOY.
- FINISH:**
 CONTACTS: 50u" MIN. NICKEL UNDER PLATED OVER ALL.
 SELECTIVE GOLD PLATED ON CONTACT AREA,
 1u" GOLD PLATED ON SOLDER TAIL.
 SHIELD & INNER SHIELD: 20u" MIN. NICKEL OVER ALL.
- LASER MARK FCI LOGO ON THE TOP OF SHIELD.
- "DATE CODE" DESCRIPTION:

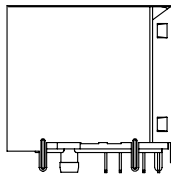
XX	XX
└─	└─
WEEK	YEAR (EX. : 10--2010)
- PRODUCT PERFORMANCE PER SPEC. : GS-12-0990.
- PACKING SPEC. : GS-14-2170.
- THIS PRODUCT MEETS THE EUROPEAN UNION DIRECTIVE AS DESCRIBED IN GS-22-008.
- THE HOUSING WILL WITHSTAND EXPOSURE TO 260°C PEAK TEMPERATURE FOR 5 SECONDS IN A WAVE SOLDER APPLICATION WITH A CIRCUIT BOARD.

9. PART NUMBER DESCRIPTION:

- 10118070-X X X X X X X LF
- └─ LEAD FREE
 - └─ 0 : RESERVED (NOT USED)
 - └─ PACKAGING
 - └─ 1 : TRAY
 - └─ OPTIONAL BACK SHIELD TAB
 - └─ 1 : WITH 1 BACK SHIELD TAB
 - └─ OPTIONAL RIGHT / LEFT SHIELD TAB
 - └─ A : SHIELD TAB WITH INNER SHIELD
 - └─ B : SHIELD TAB WITHOUT INNER SHIELD
 - └─ OPTIONAL PANEL GROUND
 - └─ 0 : WITHOUT PANEL GROUND
 - └─ LED COLOR
 - └─ 0 : WITHOUT LED
 - └─ CONTACT AREA PLATING
 - └─ 1 : 15u" GOLD PLATING
 - └─ 2 : 30u" GOLD PLATING
 - └─ 5 : 1u" GOLD FLASH PLATING



10118070-XXXAXXXLF
 (WITH INNER SHIELD)



10118070-XXXBXXLLF
 (WITHOUT INNER SHIELD)

mat'l. code	surface ASME Y14.5	tolerance ASME Y14.5	projection	product family
ltr	ecn	no	dr	date
A				
tolerances unless otherwise specified				title
angles	X.X±0.25		MM	CAT 3 MULTIPORT STACKED 2x2 WITH SHIELD, W/O LED
radius	X.XX±0.13		[INCH]	
X±1°	X.XXX±0.05		scale	
dr	WENDY CHEN	05/03/11	FCI	dwg no
enr	WENDY CHEN	05/03/11		sheet 3 of 3
chr	WENDY CHEN	05/03/11		size
appd	GARY HSEIH	05/03/11		A4
sheet index	revision sheet			type
				CUSTOMER Drawing