



## **Excellent Integrated System Limited**

Stocking Distributor

Click to view price, real time Inventory, Delivery & Lifecycle Information:

[TE Connectivity AMP Connectors](#)  
[1-557089-2](#)

For any questions, you can email us directly:  
[sales@integrated-circuit.com](mailto:sales@integrated-circuit.com)

**tyco**

Electronics

CHAMP Interconnection System

**AMP**

**CHAMP .050 Series I Connectors, Printed Circuit Board Connectors (Continued)**

**Receptacle Assembly for .025 [0.64] Ribbon Cable**

**Materials and Finish**

**Housing and Stuffer** — 94V-0 rated LCP, black

**Contacts** — Phosphor bronze, plated .000030 [0.00076] min. gold in mating area, .000150 [0.00381] min. tin-lead on terminating end, all over .000050 [0.00127] min. nickel

**Performance Specifications** — Page 19

**Mating Plug Connectors** —

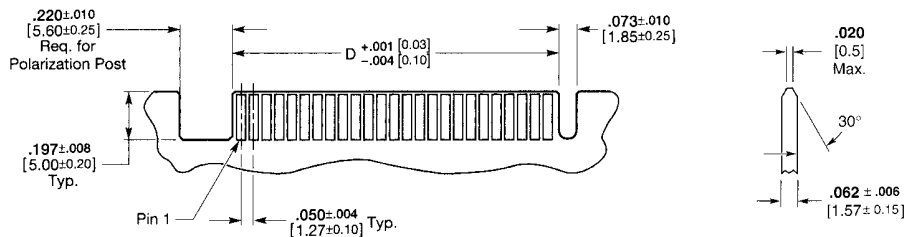
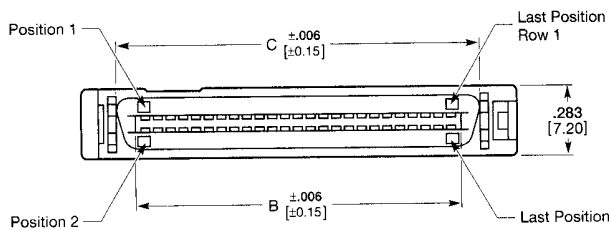
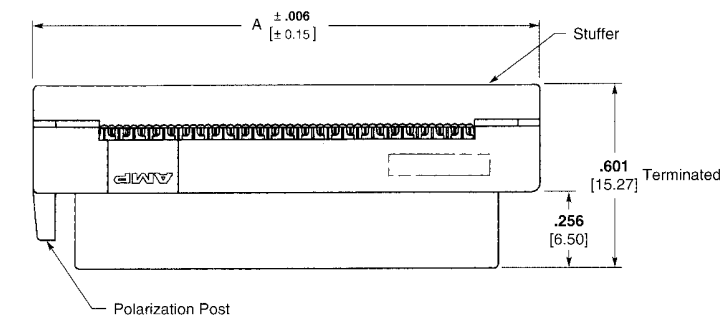
Right Angle — Page 20

Vertical — Page 22

**Mating Configurations** — Page 28

**Packaging** — Tubes

**Application Tooling** — Page 27



**Recommended PC Board Layout for Card-edge Applications**

No. of Positions	Dimensions				Part Numbers with Polarization Post
	A	B	C	D	
40	1.447 36.75	1.025 26.03	1.168 29.67	1.012 25.70	1-557089-6
50	1.697 43.10	1.275 32.38	1.418 36.02	1.267 32.18	1-557089-1
68	2.147 54.53	1.725 43.81	1.868 47.25	1.717 43.61	1-557089-2
80	2.447 62.15	2.025 51.43	2.168 55.07	2.017 51.23	1-557089-3
100	2.947 74.85	2.525 64.13	2.668 67.77	2.517 63.93	1-557089-5