

Excellent Integrated System Limited

Stocking Distributor

Click to view price, real time Inventory, Delivery & Lifecycle Information:

[TE Connectivity AMP Connectors](#)
[146832-1](#)

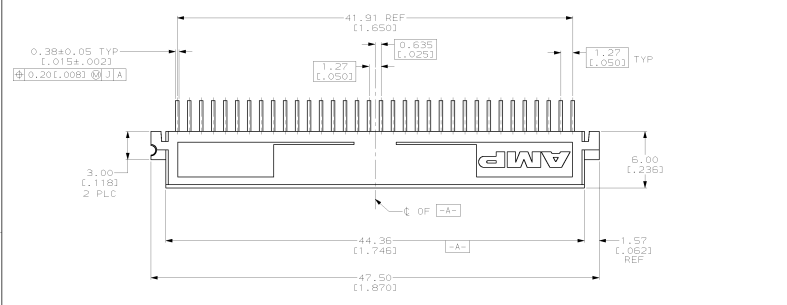
For any questions, you can email us directly:

sales@integrated-circuit.com

6 7 6 5 4 3 2 1

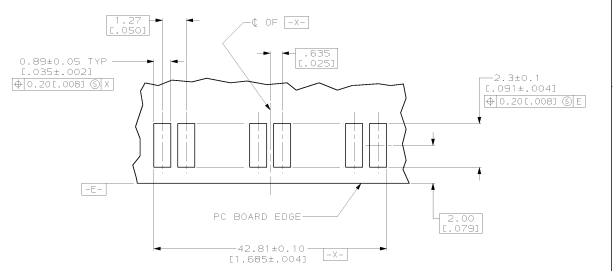
UNLESS OTHERWISE SPECIFIED: DIMENSIONS ARE IN MILLIMETERS; ALL DIMENSIONS UNLESS OTHERWISE SPECIFIED.

| REV. NO. | | REVISIONS | | |
|----------|--------------------------|-------------|----|-----|
| REV. NO. | DATE | DESCRIPTION | BY | CHK |
| 1.0 | RELEASED | | JR | DD |
| A | REV PER EC 0410-228-97 | | SB | CR |
| B | REV PER 0051-0006-98 | | JR | RB |
| C | REVISED PER 0051-0259-98 | | VP | RB |

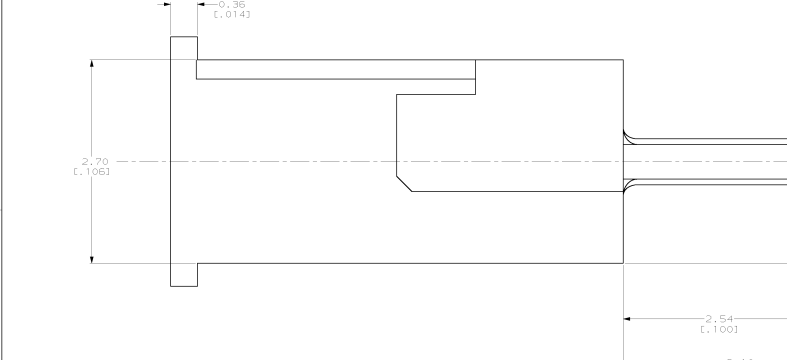
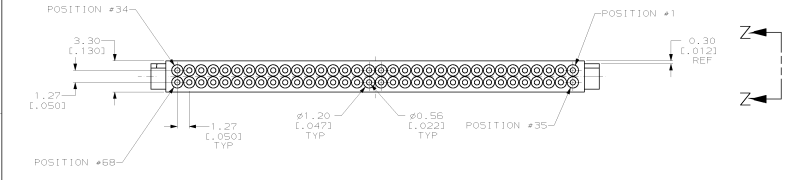


HOUSING: LCP, GLASS FILLED, COLOR: BLACK.
CONTACT: BERYLLIUM COPPER.
 0.0076(±.00030) MINIMUM GOLD ON MATING AREA,
 0.0025(±.00010) MINIMUM TIN-LEAD ON SOLDER TAIL,
 ALL OVER 0.0012(±.00050) MINIMUM NICKEL.

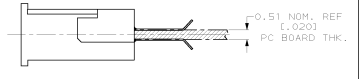
4. POINT OF CONTACT 2.3(±.091) REF FROM MATING FACE.



RECOMMENDED PC BOARD LAYOUT
SCALE: 10:1



VIEW Z-Z
SCALE: 40:1



PC BOARD LOCATION (REF)
SCALE: 10:1

| PLATING | POSITIONS | PART NUMBER |
|---------|-----------|-------------|
| 68 | 146832-1 | |

| | |
|--|---|
| | AMP Incorporated Harrisburg, PA 17105-3608 |
| | PC CARD ASSEMBLY, 68 POSITION, CENTERED STRADDLE MOUNT, AMP PC CARD |
| | SCALE: 10:1 |
| | 00779 146832 |
| | CUSTOMER DRAWING |