

Excellent Integrated System Limited

Stocking Distributor

Click to view price, real time Inventory, Delivery & Lifecycle Information:

[TE Connectivity AMP Connectors](#)
[644409-1](#)

For any questions, you can email us directly:

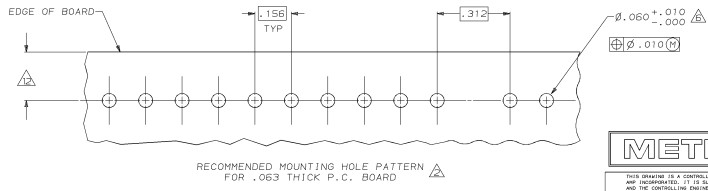
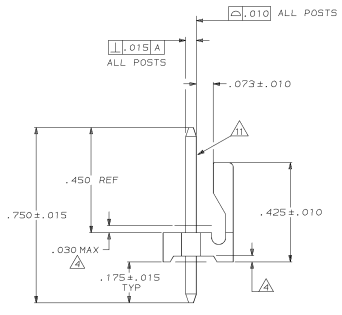
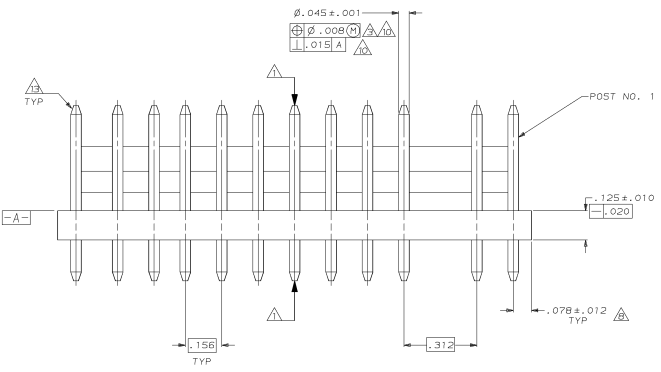
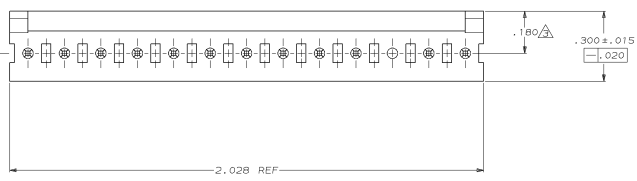
sales@integrated-circuit.com



Distributor of TE Connectivity AMP Connectors: Excellent Integrated System Limited
 Datasheet of 644409-1 - CONN HEADER 13POS VERT .156 TIN

MAKING MADE IN THIS WHOLE OR PART THEREOF IS PROHIBITED.
 THIS DRAWING IS REPRODUCED FROM THE ORIGINAL DRAWING.
 RELEASED FOR PUBLICATION -18
 © copyright 19 BY AMP INCORPORATED. ALL INTERNATIONAL RIGHTS RESERVED.

REV	DATE	DESCRIPTION	BY	APP
1	5-11-94	REV PER EC 0730-0092-94		



- △ POST TO WITHSTAND 13 NEWTONS (3LBS.) MIN. AXIAL FORCE IN BOTH DIRECTIONS SHOWN WITHOUT DISLODGING.
- △ TOLERANCES APPLY TO SOLDER SIDE OF BOARD.
- △ MEASURED AT SURFACE [-A-]
- △ PLASTIC FLASH PERMITTED IN THIS AREA.
- 5. PARTS COMPLY WITH AMP SOLDERABILITY SPEC. NO. 100-11-2.
- △ ONE HOLE MAY BE UNDERSIZED (.051/.046 DIA.) FOR ASSEMBLY RETENTION DURING WAVE SOLDERING.
- △ MATERIAL: HEADER-THERMOPLASTIC POLYESTER (GLASS-FILLED 34%-D/NATURAL) POST-COPPER ALLOY (TIN PLATED)
- △ COORDINATE DIMENSION APPLIES FROM CENTER OF ACTUAL FEATURE.
- 9. PLASTIC BURRS CAUSED BY CUT-OFF TOOLING ARE PERMITTED WITHIN THE MAXIMUM TOLERANCE ENVELOPE.
- △ POST TO BE MEASURED WHEN STRIP IS HELD FLAT.
- △ POST MUST WITHSTAND TWO 90° BENDS AGAINST EXTRUSION WITHOUT BREAKING.
- △ DIMENSION SHOULD BE .175 MIN WHEN MATING WITH A MTA-156 CONNECTOR ASSEMBLY OR A SL-156 CONNECTOR ASSEMBLY.
- △ PIN BURR OF .005 MAX. VERTICAL AND .003 MAX. HORIZONTAL PERMITTED AT POST TIPS ON BOTH ENDS.

REV	DATE	DESCRIPTION	BY	APP
2, 7 & 9		644409-2		
3		644409-1		
		POST NUMBER OMITTED		PART NUMBER

644409-1 SHOWN

IN	MM	IN	MM
.080	1.52	2.028	51.51
.051	1.30	.750	19.05
.046	1.17	.450	11.43
.045	1.14	.425	10.80
.030	0.76	.312	7.92
.020	0.51	.300	7.62
.015	0.38	.180	4.57
.012	0.30	.175	4.45
.010	0.25	.156	3.96
.008	0.20	.125	3.18
.005	0.13	.078	1.98
.003	0.08	.073	1.85
.001	0.03	.053	1.60

DO NOT SCALE PRINT. UNLESS SPECIFIED: DIMENSIONS IN mm (INCHES) TOLERANCES ON: 3 PLG DEC ± .005 ANGLES 2° ± .1° MATERIAL FINISH APPLICATION SPEC WEIGHT	DR 10-22-92 H. HANSON DRK 10-22-92 R. SWING APP'D 11-10-92 R. SPEER PRODUCT SPEC SIZE CASE CODE SCALE 00779 5:1	AMP AMP Incorporated North Wales, PA 17105-3609 NAME MTA-156 HEADER ASSEMBLY, FRICTION LOCK, STRAIGHT .045 ROUND POST, TIN PLATED, 13 POSITION, OMITTED POST DRAWING NO 644409 SHEET 1 OF 1	PART NO 644409-1
--	--	---	---------------------