



Excellent Integrated System Limited

Stocking Distributor

Click to view price, real time Inventory, Delivery & Lifecycle Information:

[TE Connectivity AMP Connectors](#)
[641283-3](#)

For any questions, you can email us directly:

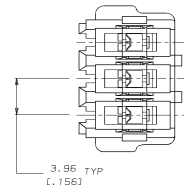
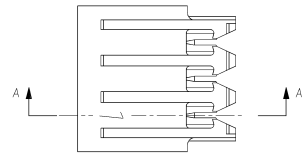
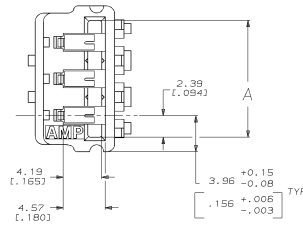
sales@integrated-circuit.com



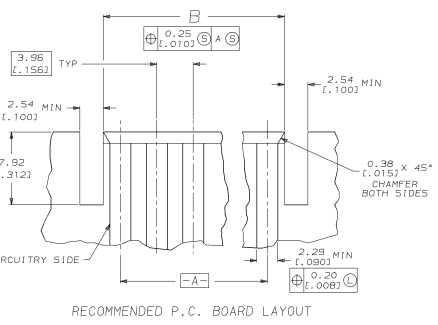
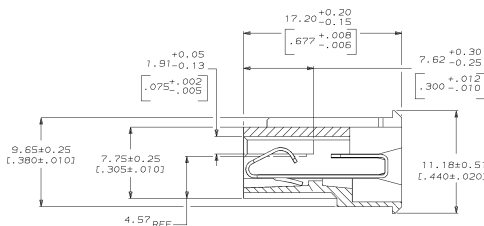
Distributor of TE Connectivity AMP Connectors: Excellent Integrated System Limited
 Datasheet of 641283-3 - 03P MTA156 EDG CONN ASSY ORNG

DRAWING MADE IN THIRD ANGLE PROJECTION
 THIS DRAWING IS UNLESS SPECIFIED RELEASED FOR PUBLICATION
 © copyright 19 BY AMP INCORPORATED. ALL INTERNATIONAL RIGHTS RESERVED.

REV	DATE	DESCRIPTION	BY	CHKD
1	08-29-96	OBS 1-6 PER EC 0730-0141-96	p	



1. MATERIAL: CONNECTOR- POLYESTER UL94V-0 (ORANGE). CONTACTS- 0.30 (.012) THK COPPER ALLOY (BRIGHT TIN 0.00203 (.000080) MIN THK).
2. CONTACT ACCEPT #18 AWG WIRE WITH 2.41 (.095) MAXIMUM INSULATION DIAMETER.
3. CONNECTOR MATES WITH 1.57±0.20 (.062±.008) THICK P.C. BOARD.
4. HOUSING FEATURES: FEED-THRU, STANDARD MOUTH WITHOUT MOUNTING EARS.
5. DIMENSIONS IN BRACKETS ARE IN INCHES.



REV	DATE	DESCRIPTION	BY	CHKD
1	08-29-96	OBS 1-6 PER EC 0730-0141-96	p	

REV	DATE	DESCRIPTION	BY	CHKD
1	08-29-96	OBS 1-6 PER EC 0730-0141-96	p	



CUSTOMER DRAWING