

## Excellent Integrated System Limited

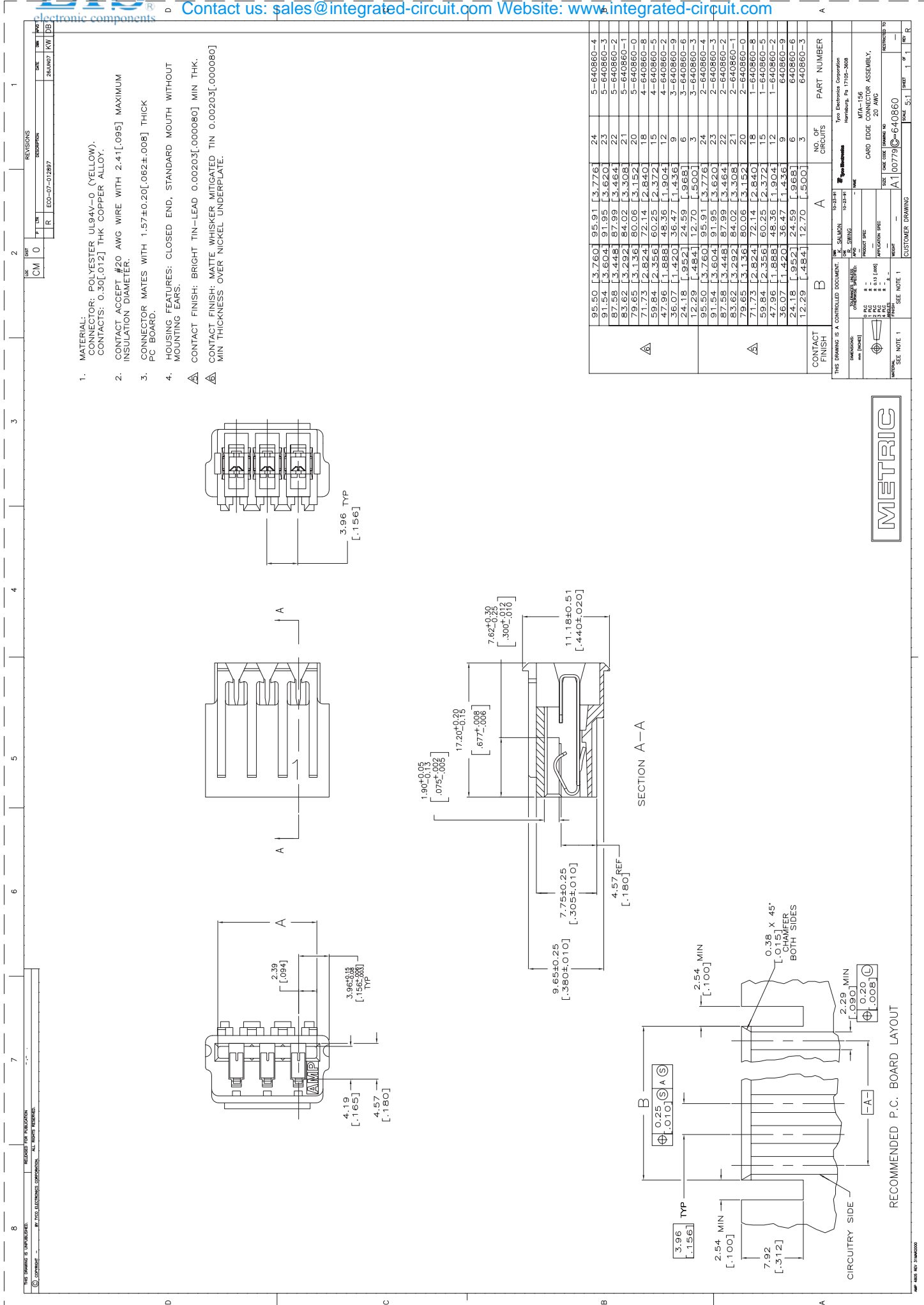
Stocking Distributor

Click to view price, real time Inventory, Delivery & Lifecycle Information:

[TE Connectivity AMP Connectors](#)  
[640860-3](#)

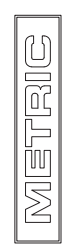
For any questions, you can email us directly:

[sales@integrated-circuit.com](mailto:sales@integrated-circuit.com)



1. MATERIAL: POLYESTER UL94V-0 (YELLOW). CONTACTS: 0.30[0.12] THK COPPER ALLOY.
  2. CONTACT ACCEPT #20 AWG WIRE WITH 2.41[.095] MAXIMUM INSULATION DIAMETER.
  3. CONNECTOR MATES WITH 1.57±0.20[.062±.008] THICK PC BOARD.
  4. HOUSING FEATURES: CLOSED END, STANDARD MOUTH WITHOUT MOUNTING EARS.
- △ CONTACT FINISH: BRIGHT TIN-LEAD 0.00203[.000080] MIN THK.  
 △ CONTACT FINISH: MATTE WHISKER MITIGATED TIN 0.00203[.000080] MIN THICKNESS OVER NICKEL UNDERPLATE.

CONTACT FINISH	B	A	NO. OF CIRCUITS	PART NUMBER
△	95.50 [3.760]	95.91 [3.776]	24	5-640860-4
	91.54 [3.604]	91.95 [3.620]	23	5-640860-3
	87.58 [3.448]	87.99 [3.464]	22	5-640860-2
	83.62 [3.292]	84.02 [3.308]	21	5-640860-1
	79.65 [3.136]	80.06 [3.152]	20	5-640860-0
	71.73 [2.824]	72.14 [2.840]	18	4-640860-8
	59.84 [2.356]	60.25 [2.372]	15	4-640860-5
	47.96 [1.888]	48.36 [1.904]	12	4-640860-2
	36.07 [1.420]	36.47 [1.436]	9	3-640860-9
	24.18 [0.952]	24.59 [0.968]	6	3-640860-6
	12.29 [0.484]	12.70 [0.500]	3	3-640860-3
	95.50 [3.760]	95.91 [3.776]	24	2-640860-4
	91.54 [3.604]	91.95 [3.620]	23	2-640860-3
	87.58 [3.448]	87.99 [3.464]	22	2-640860-2
	83.62 [3.292]	84.02 [3.308]	21	2-640860-1
	79.65 [3.136]	80.06 [3.152]	20	2-640860-0
	71.73 [2.824]	72.14 [2.840]	18	1-640860-8
	59.84 [2.356]	60.25 [2.372]	15	1-640860-5
	47.96 [1.888]	48.36 [1.904]	12	1-640860-2
	36.07 [1.420]	36.47 [1.436]	9	640860-9
	24.18 [0.952]	24.59 [0.968]	6	640860-6
	12.29 [0.484]	12.70 [0.500]	3	640860-3



RECOMMENDED P.C. BOARD LAYOUT