



Distributor of TE Connectivity AMP Connectors: Excellent Integrated System Limited
Datasheet of 749925-3 - D-Sub Connector Plug, Male Pins 50 Position Free Hanging (In-Line)
IDC, Ribbon Cable

Contact us: sales@integrated-circuit.com Website: www.integrated-circuit.com

Excellent Integrated System Limited

Stocking Distributor

Click to view price, real time Inventory, Delivery & Lifecycle Information:

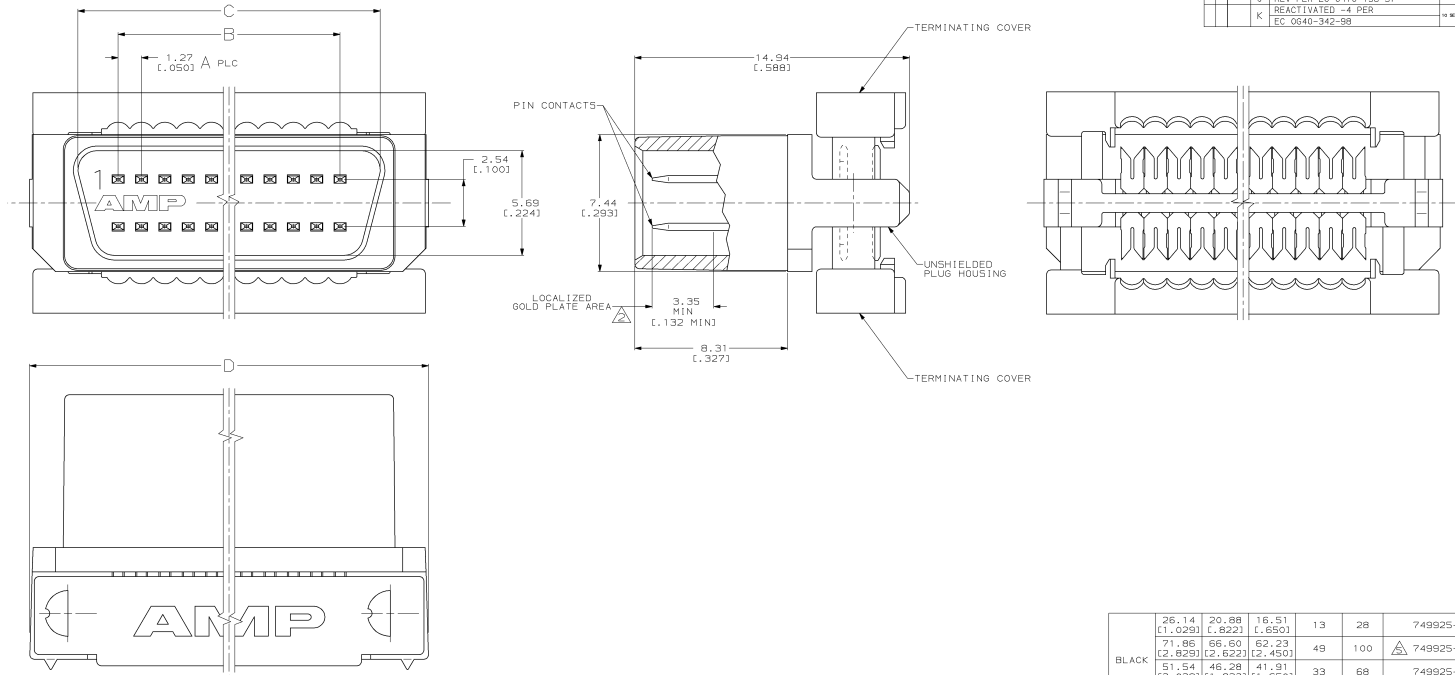
[TE Connectivity AMP Connectors](#)
[749925-3](#)

For any questions, you can email us directly:

sales@integrated-circuit.com

QUANTITY MADE IN THIRD ANGLE PROJECTION
 THIS DRAWING IS UNCONTROLLED. RELEASED FOR PUBLICATION
 © COPYRIGHT 18 BY AMP INCORPORATED. ALL INTERNATIONAL RIGHTS RESERVED.

REV	DATE	DESCRIPTION	BY	CHKD
G	0020-1532-34	REV PER EC 0020-1532-34	RM	RM
H	0015-18-45	REV PER EC 0020-481-96	LB	LB
J	0410-138-97	REV PER EC 0410-138-97	RM	RM
K	0640-342-88	REACTIVATED -4 PER EC 0640-342-88	DA	DA



- MATERIAL:**
 PIN CONTACTS- PHOSPHOR BRONZE.
 PLUG HOUSING UL V-0 RATED THERMOPLASTIC, COLOR: SEE TABLE.
 TERMINATION COVERS- UL V-0 RATED THERMOPLASTIC, COLOR: BLACK.
- PLATING:**
 PIN CONTACTS- 0.00076 (0.00030) MINIMUM GOLD PLATE IN LOCALIZED GOLD PLATE AREA, 0.00127 (0.00050) MINIMUM BRIGHT TIN-LEAD PLATE IN TERMINATION AREA, ALL OVER 0.00127 (0.00050) MINIMUM NICKEL.
- 3. DIMENSIONS IN BRACKETS ARE IN INCHES.**
- 4. RECOMMENDED WIRE:**
 28 AWG- 0.81 (0.032) MAX O.D. PVC OR POLYETHYLENE INSULATION.
 OBSOLETE PART NUMBER.

COLOR	D	C	B	A	NO. OF PINS	PART NO
BLACK	26.14 (1.029)	20.88 (0.822)	16.51 (0.650)	13	28	749925-7
	71.86 (2.829)	66.60 (2.622)	62.33 (2.450)	49	100	749925-6
	51.54 (2.029)	46.28 (1.822)	41.91 (1.650)	33	68	749925-5
GRAY	46.46 (1.829)	41.20 (1.622)	36.83 (1.450)	29	60	749925-4
	40.11 (1.579)	34.85 (1.372)	30.48 (1.200)	24	50	749925-3
BLACK	33.76 (1.329)	28.50 (1.122)	24.13 (0.950)	19	40	749925-2
	21.06 (0.829)	15.80 (0.622)	11.43 (0.450)	9	20	749925-1

DO NOT SCALE PRINT. UNLESS SPECIFIED DIMENSIONS IN MM (INCHES) TOLERANCES ON 3 PLC DEC = 0.38 (0.015) 5 PLC DEC = .2 ANGLE ± 2°	DR 12/24/99 H. KILPATRICK CHK 12/05/99 M. VAJTS APPD 12/05/99 D. BRITZBERGER R. WITTEMAN PRODUCT SPEC	AMP INCORPORATED 1000 W. 11TH ST. MILWAUKEE, WI 53219
FINISH -	APPLICATION SPEC -	NAME PLUG ASSEMBLY, UNSHIELDED, AMPLIMITE .050 Series
WEIGHT -	SCALE 10:1	CAGE CODE 00779 DRAWING NO 749925 SHEET 1 OF 1