

Excellent Integrated System Limited

Stocking Distributor

Click to view price, real time Inventory, Delivery & Lifecycle Information:

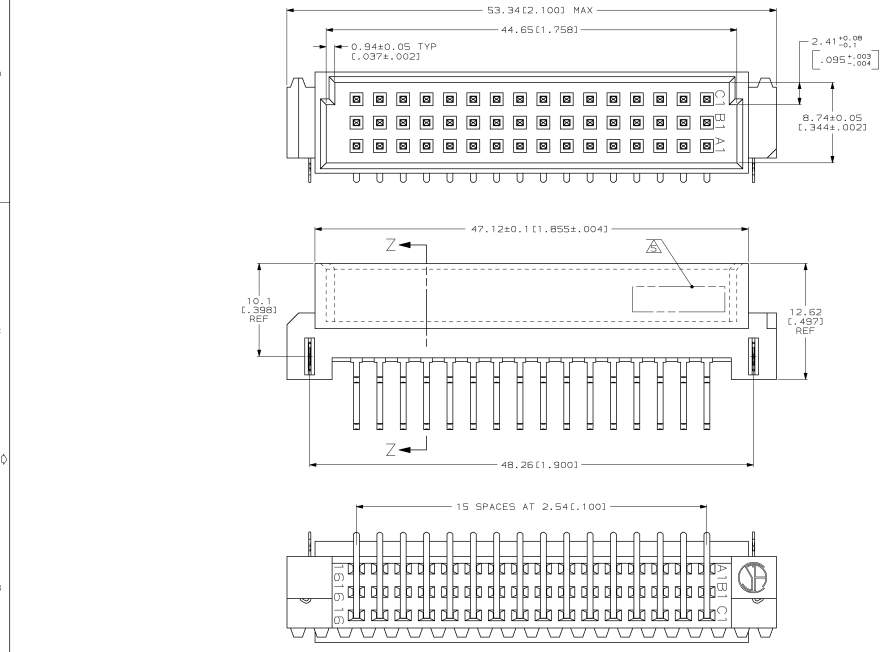
[TE Connectivity AMP Connectors](#)
[148031-1](#)

For any questions, you can email us directly:

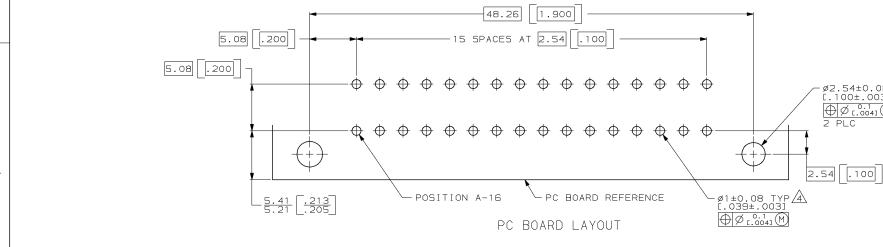
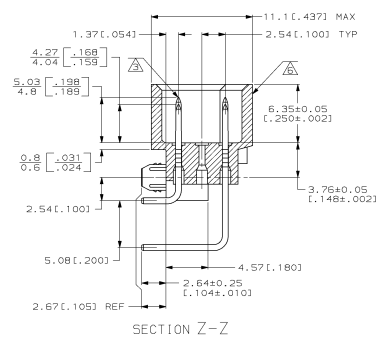
sales@integrated-circuit.com

MAKING MADE IN THIS AREA PROJECTION
 THIS DRAWING IS UNCONTROLLED
 RELEASED FOR PUBLICATION
 © AMP INCORPORATED. ALL INTERNATIONAL RIGHTS RESERVED.

REV. NO.		DATE	DESCRIPTION	BY	APP'D
C	EC	0504-0052-96		7/77/87	CR
D	EC	0503-0377-97		7/77/87	CR



- △ HOUSING MATERIAL: GLASS-FILLED POLYESTER. COLOR: GRAY.
- △ POST MATERIAL: BRASS.
- △ POST FINISH: BSN 41612 CLASS 2 IN CONTACT AREA. TIN-LEAD PLATE ON POSTS.
- △ RECOMMENDED HOLE SIZE FOR MANUAL APPLICATION OF CONNECTOR ONTO PC BOARD.
- △ [PART NUMBER, DATE CODE] MARKED THIS APPROXIMATE AREA.
- △ MARKING ON THIS SIDE.



POSITIONS LOADED WITH	POSITIONS LOADED WITH	ROWS	NO. OF LOADED POSITION	ASSY PART NUMBER
9,11-14	1-8,10,15,16	C	16	148031-1
NONE	NONE	B	0	
9,11-14	1-8,10,15,16	A	16	

DO NOT SCALE PRINT. UNLESS SPECIFIED DIMENSIONS IN MM (INCHES) TOLERANCES ON:
 1. PLC DEC ±0.131 (0.005)
 2. ANGLES ±0.131 (0.005)
 3. HOLE DIA ±0.131 (0.005)
 4. HOLE DIA ±0.131 (0.005)
 5. HOLE DIA ±0.131 (0.005)

DR: L. BRINER 1/26/84	OR: S. PATTERSON 1/27/84	APP'D: S. PATTERSON 1/27/84	NAME: PIN ASSEMBLY, EUROCARD, TYPE "1/2C" WITH BOARD-LOCKS AND "MFBL" CONTACTS
DATE: 1/26/84	DATE: 1/27/84	DATE: 1/27/84	PRODUCT SPEC: -
FINISH: -	APPLICATION SPEC: -	SCALE: 5:1	CAGE CODE: 00779
POST: -	WEIGHT: -	DRAWING NO: 148031	SHEET: 1 OF 1

AMP INCORPORATED
 Harrisburg, PA 17105-3600

CUSTOMER DRAWING