



Distributor of TE Connectivity AMP Connectors: Excellent Integrated System Limited
Datasheet of 206971-2 - D-Sub Connector Plug, Male Pins 50 Position Through Hole, Right
Angle Solder

Contact us: sales@integrated-circuit.com Website: www.integrated-circuit.com

Excellent Integrated System Limited

Stocking Distributor

Click to view price, real time Inventory, Delivery & Lifecycle Information:

[TE Connectivity AMP Connectors](#)
[206971-2](#)

For any questions, you can email us directly:

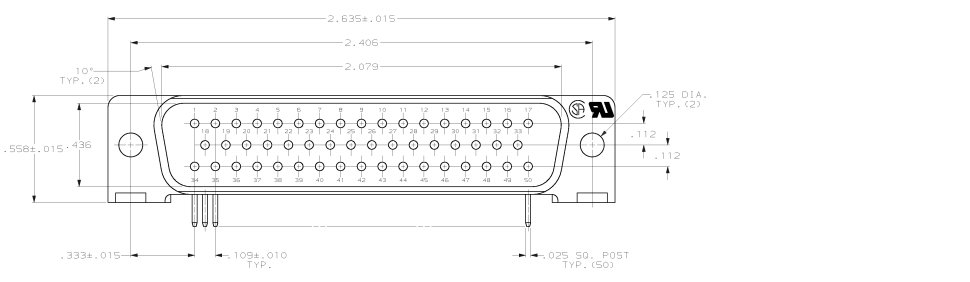
sales@integrated-circuit.com



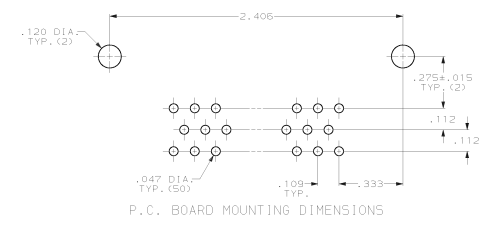
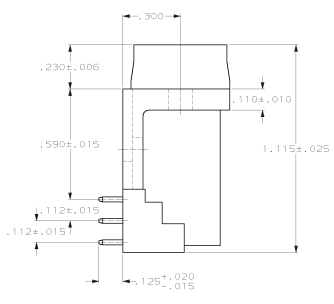
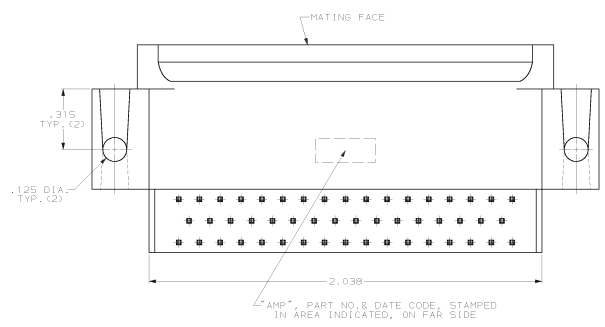
Distributor of TE Connectivity AMP Connectors: Excellent Integrated System Limited

Datasheet of 206971-2 - D-Sub Connector Plug, Male Pins 50 Position Through Hole, Right

6	7	6	5	4	3	2	1
REVISIONS		REV		DATE		BY	
BD		77		L		REV PER EC 0540-429-99	



- CONNECTOR MATES WITH ANY 50 POS. RECEPTACLE IN AMP/IMITE SERIES & COMPLIES WITH AMP SPEC. 109-40.005 WHERE APPLICABLE.
- FLAME RETARDANT 94V-0 RATED THERMOPLASTIC; COLOR: BLACK.
- BRASS PER MIL-C-50.
- GOLD PLATING PER MIL-G-45204, TIN PLATING PER MIL-T-10727, NICKEL PLATING PER QQ-N-290.
- GOLD PLATED FOR LENGTH OF .150 MIN FROM MATING END, .000030 MIN GOLD IN MATED AREA, .000100 MIN TIN-LEAD ON OPPOSITE END, BOTH OVER .000050 MIN NICKEL.
- .000050 GOLD FOR LENGTH OF .150 MIN. FROM MATING END, GOLD FLASH ON REMAINDER, ALL OVER .000050 NICKEL ON ENTIRE CONTACT.
- GOLD PLATED FOR LENGTH OF .150 MIN FROM MATING END, GOLD FLASH IN MATED AREA, .000100 MIN TIN-LEAD ON OPPOSITE END, BOTH OVER .000050 MIN NICKEL.



OBSOLETE	△	206971-5
OBSOLETE	△	206971-4
OBSOLETE	△	206971-3
	△	206971-2
	△	206971-1
		CONTACT FINISH
		PART NUMBER

THIS DRAWING IS A CONTROLLED DOCUMENT.		REV	DATE	BY	CHKD	APP'D	AMP Incorporated Harrisburg, PA 17105-3608
DESCRIPTION	206971-2	REV	DATE	BY	CHKD	APP'D	AMP Incorporated
UNLESS OTHERWISE SPECIFIED:							
UNIT	INCHES						
SCALE	AS SHOWN						
DATE	10/05/00						
DESIGNER	WJ						
DRAWN	WJ						
CHECKED	WJ						
APPROVED	WJ						
REVISIONS							
REV	DATE	BY	CHKD	APP'D	DESCRIPTION		
A	10/07/99	WJ			206971-2		
CUSTOMER DRAWING							