

## **Excellent Integrated System Limited**

Stocking Distributor

Click to view price, real time Inventory, Delivery & Lifecycle Information:

[TE Connectivity AMP Connectors](#)  
[207313-1](#)

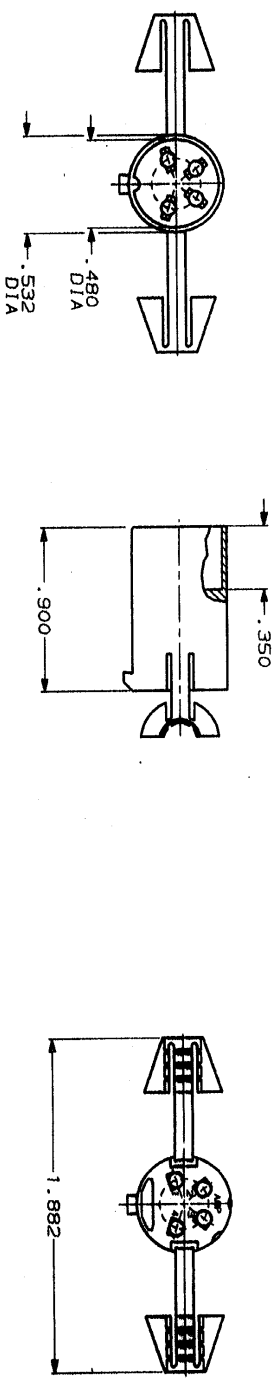
For any questions, you can email us directly:

[sales@integrated-circuit.com](mailto:sales@integrated-circuit.com)



DRAWING MADE IN THIRD ANGLE PROJECTION  
 THIS DRAWING IS UNPUBLISHED.  
 © CONNECTOR IS  
 RELEASED FOR PUBLICATION  
 BY AMP INCORPORATED. ALL INTERNATIONAL RIGHTS RESERVED.  
 .19

REV	DATE	BY	DESCRIPTION
23	BD	39	REDRAWN



1. ASSEMBLES WITH 207314-1

DO NOT SCALE PRINT. DIMENSIONS SPECIFIED UNLESS SPECIFIED DIMENSIONS IN INCHES TOLERANCES ON: 2 PLG DEC # .005 3 PLG DEC # .005 ANGLES MATERIAL NYLON, BLACK FINISH	DR 8/20/90 A. STUBB BG CHK Howard S-30-91 APPD H. Black 6-3-91 APPD - Quinn 4/7/91 PRODUCT SPEC	NAME <b>AMP</b> AMP Incorporated Harrisburg, PA 17105-3608
APPLICATION SPEC DETAIL	SIZE G 00779 SCALE 2:1	DRAWING NO 207313 SHEET 1 OF 1

207313-1  
 PART  
 NO.

207313

CUSTOMER DRAWING