

Excellent Integrated System Limited

Stocking Distributor

Click to view price, real time Inventory, Delivery & Lifecycle Information:

[TE Connectivity AMP Connectors](#)
[650019-1](#)

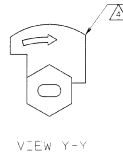
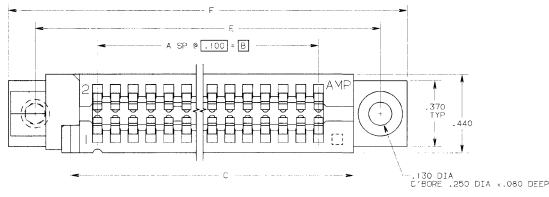
For any questions, you can email us directly:

sales@integrated-circuit.com

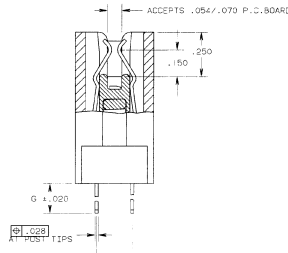
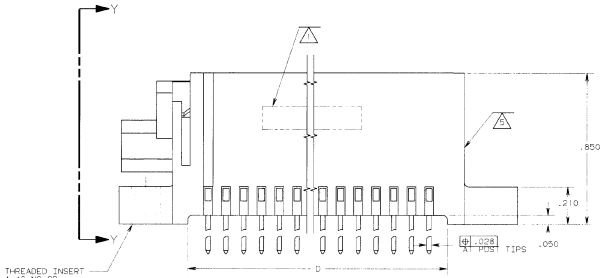
DATE: 10/13/84

THIS DRAWING IS UNPUBLISHED. RELEASED FOR PUBLICATION. THIS DATE IS THE DATE OF PUBLICATION. ALL RIGHTS RESERVED. AMP PRODUCTS MAY BE COVERED BY U.S. AND FOREIGN PATENTS AND/OR PATENTS PENDING.

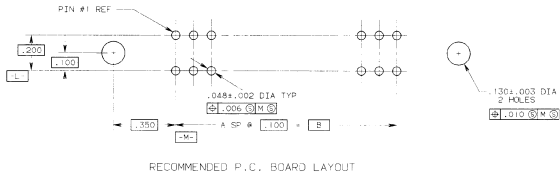
REV	DATE	DESCRIPTION	BY	CHKD
1	3/13/84	REVISED PER 404760
2
3
4
5
6
7
8



- ▲ PART NUMBER AND DATE CODE STAMPED IN THIS AREA ON EITHER SIDE.
- ▲ CONTACT: COPPER ALLOY
- ▲ HOUSING: GLASS FILLED POLYESTER 94 V0, COLOR: BLACK
- ▲ CAM ROD: STAINLESS STEEL
- ▲ BOARD LOCK: GLASS FILLED NYLON, COLOR: BLACK
- ▲ INSERT: BRASS
- ▲ CONTACT: .00030 GOLD SELECTIVE PLATED IN CONTACT AREA TEN LEAD PLATE .00100 MINIMUM THICKNESS ON POST TIPS, OVER HOLE UNDER PLATE .00050 MINIMUM THICKNESS ALL OVER
- ▲ CAM ROD AND BOARD LOCK SHIPPED WITH EACH CONNECTOR. ROTATE IN DIRECTION OF ARROW TO OPEN.
- ▲ CAM ROD MAY NOT EXTEND BEYOND HOUSING SURFACE.



SECTION X-X



REV	DATE	DESCRIPTION	BY	CHKD
1	3/13/84	REVISED PER 404760
2
3
4
5
6
7
8

AMP	25/250	650019-1
DATE	3/13/84	POSITION
BY	D. GORENC	NAME
CHKD	D. GORENC	NAME
MATERIAL	ROTARY ZIF ASSEMBLY .100 X .200 SOLDER POST, OPEN BOTH ENDS	
FINISH	SIZE	DRAWING NO
	D 00779	650019
	SCALE	SHEET
	4:1	OF 1

CUSTOMER DRAWING