

## **Excellent Integrated System Limited**

Stocking Distributor

Click to view price, real time Inventory, Delivery & Lifecycle Information:

[TE Connectivity AMP Connectors](#)  
[745007-1](#)

For any questions, you can email us directly:

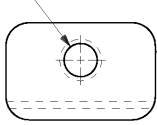
[sales@integrated-circuit.com](mailto:sales@integrated-circuit.com)

4  
 DRAWING MADE IN THIRD ANGLE PROJECTION

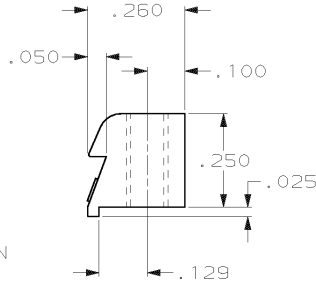
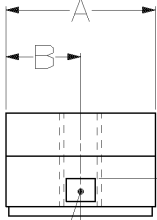
THIS DRAWING IS UNPUBLISHED. RELEASED FOR PUBLICATION  
 BY AMP INCORPORATED. ALL INTERNATIONAL RIGHTS RESERVED.

LOC	DIST	P	F	ZONE	LTR	DESCRIPTION	DATE	APPD
GP	00				E	REV PER OUID-0274-00	11/05/01	JR

THREAD  
 SEE TABLE



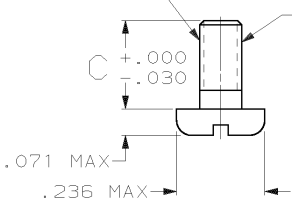
LATCHING BLOCK  
 QTY: 2  
 MATL: ZINC ALLOY



- 1. PARTS PACKAGED UNASSEMBLED.
- ⊠ PARTS PACKAGED AS A UNIT KIT.
- ⊡ PACKAGED 50 UNIT KITS PER PACKAGE.
- ⊣ OBSOLETE PART NUMBER.

THREAD  
 SEE TABLE

THREAD IDENTIFICATION  
 LOCATED IN THIS AREA



PAN HEAD SCREW  
 QTY: 2  
 MATL: COLD ROLLED STEEL  
 PER ASTM A108  
 FINISH: ZINC PLATED PER ASTM  
 B633, TYPE III, CLASS  
 SC1, CLEAR CHROMATE

PACKAGING	THREAD SIZE	C	B	A	SIZE	PART NO
⊠	M3X0.5	.236	.200	.400	1 THRU 4	⊠ 745007-7
⊡	#4-40	.188	.265	.530	5	⊣ 745007-6
⊡	#4-40	.188	.200	.400	1 THRU 4	745007-5
⊡	M3X0.5	.177	.265	.530	5	⊣ 745007-4
⊡	M3X0.5	.177	.200	.400	1 THRU 4	⊣ 745007-3
⊡	M3X0.5	.236	.265	.530	5	⊣ 745007-2
⊡	M3X0.5	.236	.200	.400	1 THRU 4	745007-1

DO NOT SCALE PRINT. UNLESS SPECIFIED DIMENSIONS IN INCHES TOLERANCES ON: 2 PLC DEC ± - 3 PLC DEC ± .010 ANGLES ± -	DR S-20-BB C RICHARD CHK S-20-BB S WILDON APPD S-23-BB V KLAR APPD S-20-BB R WHYNE	AMP INCORPORATED Harrisburg, Pa. 17105
MATERIAL SEE CALLOUTS	PRODUCT SPEC -	NAME KIT, LATCHING BLOCK, RS 449 TYPE, WITH SCREWS, AMPLIMITE®
FINISH SEE CALLOUTS	APPLICATION SPEC -	SIZE B FSCM NO 00779 DRAWING NO 745007
WEIGHT -	SCALE 4:1	SHEET 1 OF 1