

Excellent Integrated System Limited

Stocking Distributor

Click to view price, real time Inventory, Delivery & Lifecycle Information:

[TE Connectivity AMP Connectors](#)
[745919-2](#)

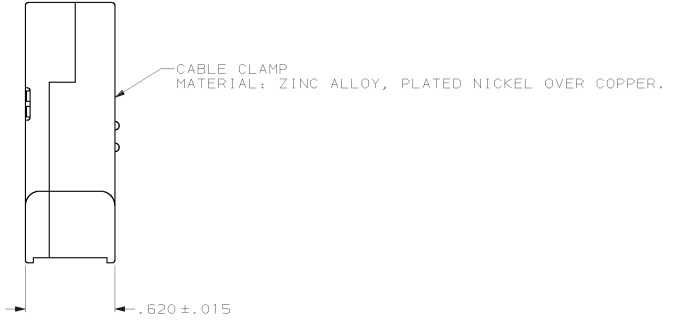
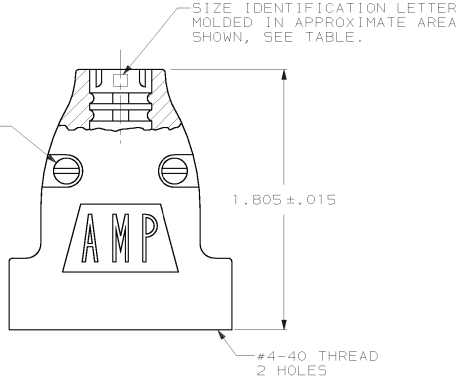
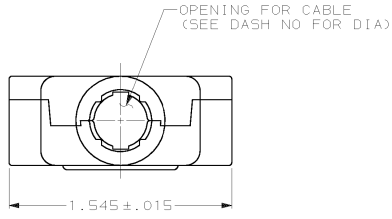
For any questions, you can email us directly:

sales@integrated-circuit.com

DRAWING MADE IN THIRD ANGLE PROJECTION

THIS DRAWING IS UNPUBLISHED. RELEASED FOR PUBLICATION .19
 © COPYRIGHT 19 BY AMP INCORPORATED. ALL INTERNATIONAL RIGHTS RESERVED.

LOC	DIST	REVISONS				DATE	APPD
BD	0	#	ZONE	LTR	DESCRIPTION		
			B		REDRAWN	7-90	-
			C		0B5 -4 PER EC 0U1D-0155-00	02 FEB 01	DK



1. PARTS PACKAGED UNASSEMBLED.

OBSELETE	B	.225	745919-4
	E	.300	745919-3
	H	.375	745919-2
	K	.430	745919-1
	SIZE IDENT LETTER	MAX CABLE DIA	PART NUMBER

DO NOT SCALE PRINT. UNLESS SPECIFIED DIMENSIONS IN INCHES TOLERANCES ON : 2 PLC DEC ± .005 ANGLES # -	DR 7-25-90 J GALLUCCI BG	AMP INCORPORATED Harrisburg, Pa. 17105	
MATERIAL SEE CALLOUTS	CHK - APPD - PRODUCT SPEC -		
FINISH SEE CALLOUTS	APPLICATION SPEC - WEIGHT -	SIZE C	FSCM NO 00779
		DRAWING NO 745919	SHEET 1 OF 1