

## **Excellent Integrated System Limited**

Stocking Distributor

Click to view price, real time Inventory, Delivery & Lifecycle Information:

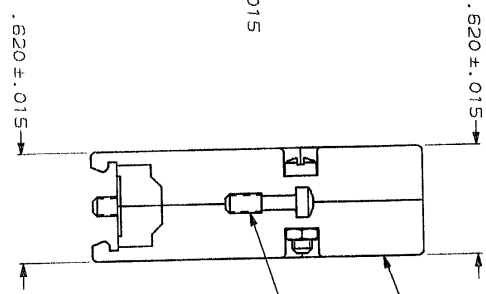
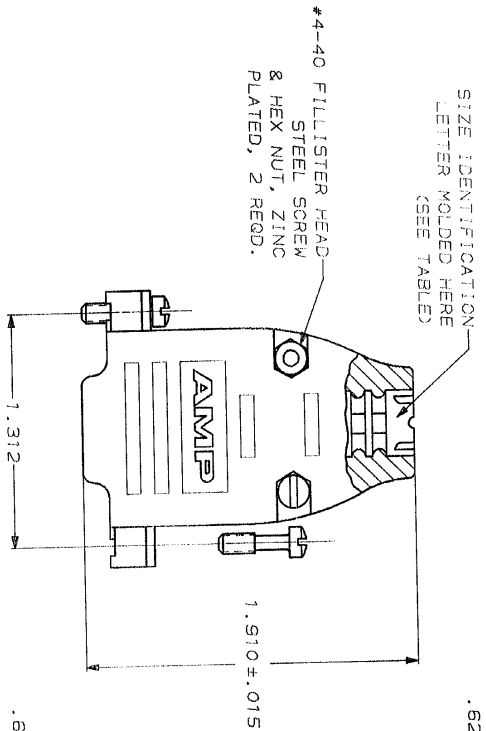
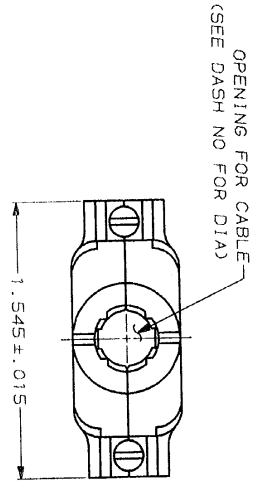
[TE Connectivity AMP Connectors](#)  
[747099-7](#)

For any questions, you can email us directly:

[sales@integrated-circuit.com](mailto:sales@integrated-circuit.com)



DRAWING MADE IN THIRD ANGLE PROJECTION		REVISED FOR PUBLICATION		RELEASED FOR PUBLICATION		BY AMP INCORPORATED. ALL INTERNATIONAL RIGHTS RESERVED.							
MOD	22	DOC	BD	QTY	39	DATE	5-16-90						
P		ZONE	178	DESCRIPTION	REDDRAWN ON CAD								
<table border="1"> <tr> <th>NO</th> <th>DATE</th> <th>DESCRIPTION</th> </tr> <tr> <td>1</td> <td>5-16-90</td> <td>REDDRAWN ON CAD</td> </tr> </table>								NO	DATE	DESCRIPTION	1	5-16-90	REDDRAWN ON CAD
NO	DATE	DESCRIPTION											
1	5-16-90	REDDRAWN ON CAD											



CABLE CLAMP MATERIAL: FLAME RETARDANT THERMOPLASTIC FINISH: BRIGHT NICKEL OVER BRIGHT COPPER

REMARKS	SIZE IDENT LETTER	CABLE DIA	BULK PACKED KIT NO	INDIVIDUAL KIT NO
△	B	.225	747099-8	747099-2
	E	.300	747099-6	747099-5
	H	.375	747099-4	747099-3
	K	.430	747099-2	747099-1

- △ ALL PARTS PACKAGED UNASSEMBLED.
- △ AS SHOWN ABOVE, THIS KIT CONSISTS OF 2 STRAIN RELIEF HALVES, 2 #4-40 SCREWS, 2 #4-40 NUTS & 2 #4-40 MOUNTING SCREWS.
- △ SAME AS SHOWN, EXCEPT, EACH PART IS INDIVIDUALLY BULK PACKED FOR MULTIPLE KIT ORDERS.
- △ OBSOLETE

DO NOT SCALE PRINT. DIMENSIONS SPECIFIED IN INCHES. TOLERANCES ON:

1. PLG DEC ± .005

2. PLG DEC ± .005

3. PLG DEC ± .005

AMPERIAL

DR 5-16-90  
J GALLUCI B6  
CHK - 11/5/90  
APPD - 7/1/90  
PROJECT SPEC

NAME: AMP INCORPORATED  
North Wales, Pa. 17155

CABLE CLAMP KIT, SIZE 2, 15 POSN, 180°, PLATED PLASTIC, AMPLIMIT™

FINISH: SEE CALLOUT

APPLICATION SPEC

SIZE: C  
FSCN NO: 00779  
SCALE: 2:1

DRAWING NO: 747099

SHEET: 1 OF 1

CUSTOMER DRAWING