

Excellent Integrated System Limited

Stocking Distributor

Click to view price, real time Inventory, Delivery & Lifecycle Information:

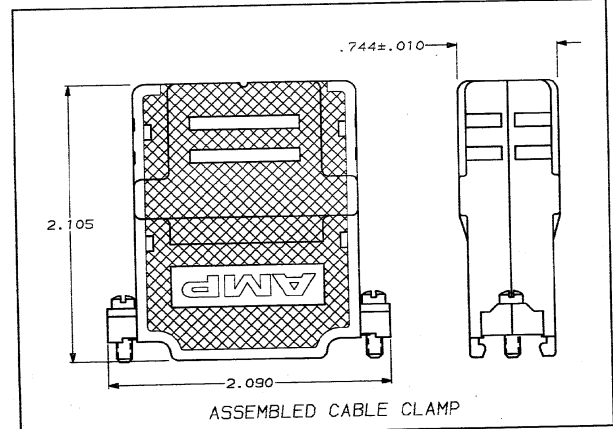
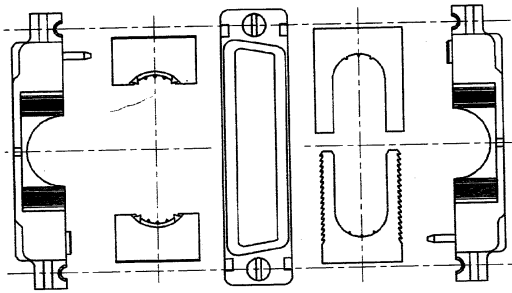
[TE Connectivity AMP Connectors](#)
[748665-1](#)

For any questions, you can email us directly:

sales@integrated-circuit.com

DRAWING MADE IN THIRD ANGLE PROJECTION
 THIS DRAWING IS UNPUBLISHED. RELEASED FOR PUBLICATION
 © COPYRIGHT 12 BY AMP INCORPORATED. ALL INTERNATIONAL RIGHTS RESERVED.

MOD	DOC	DIST	P	F	ZONE	LTR	REVISIONS	DATE	APPD
22	BD	39				A	REDRAWN	7-90	-
						B	REV PER ECN BD4512	12/05/98	-/4



CABLE CLAMP WEDGE SET, QUANTITY: 2,
 ONE SET FOR .190 DIA TO .380 DIA CABLE AND
 ONE SET FOR .380 DIA TO .530 DIA CABLE.

#4-40 MOUNTING SCREW
 QUANTITY: 2

CABLE CLAMP HALF
 QUANTITY: 2

25 POSITION AMPLIMITE
 CONNECTOR SHOWN,
 REFERENCE ONLY.

BRAID TERMINATION CLAMP SET
 QUANTITY: 1

	748665-2
	748665-1
PACKAGING	PART NUMBER

- PARTS PACKAGED UNASSEMBLED.
- PARTS PACKAGED AS A UNIT KIT.
- PARTS INDIVIDUALLY BULK PACKAGED AND SHIPPED AS A UNIT PACKAGE.
- ABS MOLDING COMPOUND, BLACK.
- STEEL PER ASTM A108.
- PLATED NICKEL OVER COPPER.
- ZINC PLATED PER ASTM B633, TYPE III, CLASS SCI, CLEAR CHROMATE.

DO NOT SCALE PRINT. UNLESS SPECIFIED DIMENSIONS IN INCHES TOLERANCES ON 1 PLC DEC ± .005 2 PLC DEC ± .005 3 PLC DEC ± .005 ANGLES * -	DR 7-26-90 J. SALLUCCI B6 CHK 9-10-90 J. MCCLINTON APPD 9-10-90 J. WESTMAN APPD 9-11-90 J. ASSINI PRODUCT SPEC - APPLICATION SPEC - WEIGHT -	AMP AMP INCORPORATED Morrisburg, Pa. 17166 NAME UNIVERSAL CABLE CLAMP KIT, SHIELDED, SIZE 3, 25 POSITION, AMPLIMITE™ SIZE C FSCH NO 00779 SCALE 2:1 DRAWING NO 748665 SHEET 1 OF 1
--	--	---

CUSTOMER DRAWING