



**Distributor of TE Connectivity AMP Connectors: Excellent Integrated System Limited**  
Datasheet of 748901-1 - D-Sub Connector Receptacle, Female Sockets 25 Position Through  
Hole, Right Angle Solder

Contact us: [sales@integrated-circuit.com](mailto:sales@integrated-circuit.com) Website: [www.integrated-circuit.com](http://www.integrated-circuit.com)

---

## **Excellent Integrated System Limited**

Stocking Distributor

Click to view price, real time Inventory, Delivery & Lifecycle Information:

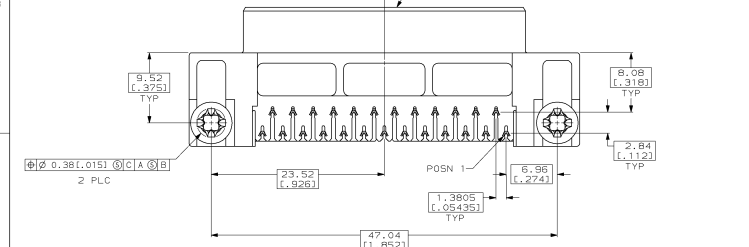
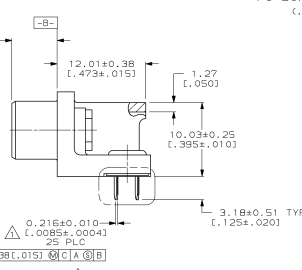
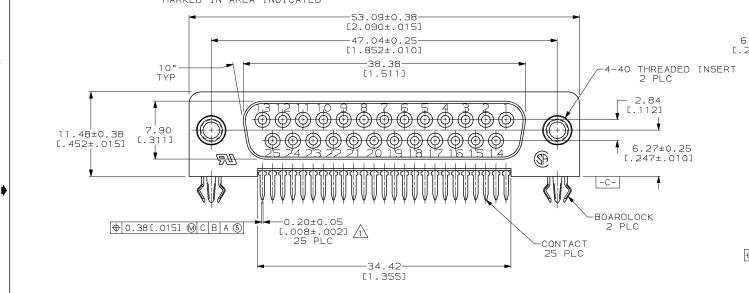
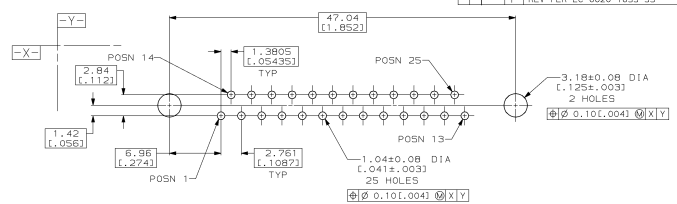
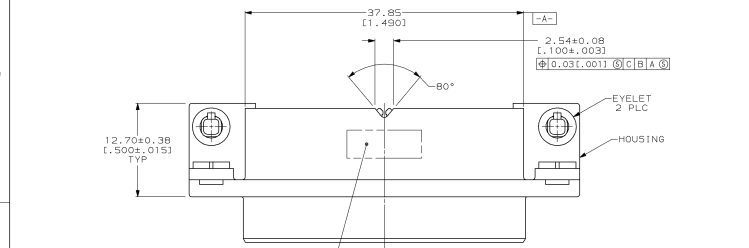
[TE Connectivity AMP Connectors  
748901-1](#)

For any questions, you can email us directly:

[sales@integrated-circuit.com](mailto:sales@integrated-circuit.com)

DRAWING MADE IN THIRD ANGLE PROJECTION  
 THIS DRAWING IS UNCONTROLLED. RELEASED FOR PUBLICATION  
 © AMP INCORPORATED. ALL INTERNATIONAL RIGHTS RESERVED.

REV	DATE	DESCRIPTION	BY	CHK
C	REV PER ECN 804980			
D	OBSOLETE -2, SUPERSEDED -1 & -3			
E	PER ECN 806411			
F	REACTIVATED -1 PER EC 0020-117-94			
F	REV PER EC 0020-1053-95			



- ▲ POSITION TOLERANCE APPLIES AT TYP ONLY.
- ▲ NYLON OR POLYESTER, UL94V-0, BLACK.
- ▲ PHOSPHOR BRONZE PER QQ-B-750.
- ▲ EYELETS: BRASS; INSERTS: ZINC; BOARDLOCKS: COPPER ALLOY.
- ▲ GOLD PLATING PER MIL-Q-45204, NICKEL PLATING PER QQ-N-290, TIN PLATING PER MIL-T-10727.
- ▲ EYELETS: 5.08 μm [0.000200] MIN TIN OVER COPPER FLASH; BOARDLOCKS: 5.08 μm [0.000200] MIN TIN-LEAD OVER 1.27 μm [0.00050] MIN NICKEL.
- ▲ 0.76 μm [0.000030] MIN GOLD FOR A LENGTH OF 1.52 [0.060] MIN FROM MATING END, 3.05 μm [0.00120] MIN TIN-LEAD FOR A LENGTH OF 3.68 [0.145] MIN FROM OPPOSITE END, BOTH OVER 1.27 μm [0.00050] MIN NICKEL.
- ▲ GOLD FLASH FOR A LENGTH OF 1.52 [0.060] MIN FROM MATING END, 3.05 μm [0.00120] MIN TIN-LEAD FOR A LENGTH OF 3.68 [0.145] MIN FROM OPPOSITE END, BOTH OVER 1.27 μm [0.00050] MIN NICKEL.
- ▲ 0.25 μm [0.000010] MIN GOLD FOR A LENGTH OF 1.52 [0.060] MIN FROM MATING END, 3.05 μm [0.00120] MIN TIN-LEAD FOR A LENGTH OF 3.68 [0.145] MIN FROM OPPOSITE END, BOTH OVER 1.27 μm [0.00050] MIN NICKEL.

SUPERSEDED BY 748877-3	748901-3
OBSOLETE	748901-2
	748901-1

DO NOT SCALE PRINT. UNLESS SPECIFIED DIMENSIONS IN MM (INCHES) TOLERANCES ON: Ø PLG DEC ± 0.13 LOSS Ø PLG DEC ±	OR 80/03/90 1.40L0M CHK 8/29/98 R.51/98	NAME RECEPTACLE ASSEMBLY, SIZE 3, 25 POSN, ALL PLASTIC, RIGHT ANGLE .318 SERIES, AMPLIMITE® III
MATERIAL: ANVLES ± 2°	APRD 8/13/98 K.5/98	AMP INCORPORATED MILWAUKEE, WI, USA
HOUSING: ▲	APRD 8/13/98 K.5/98	
CONTACTS: ▲	APRD 8/13/98 K.5/98	
HARDWARE: ▲	APRD 8/13/98 K.5/98	
FINISH ▲	APRD 8/13/98 K.5/98	
HARDWARE: ▲	APRD 8/13/98 K.5/98	
CONTACTS: SEE TABLE	APRD 8/13/98 K.5/98	
INSERTS: CLEAR CHROMATE	APRD 8/13/98 K.5/98	
	APRD 8/13/98 K.5/98	