

Excellent Integrated System Limited

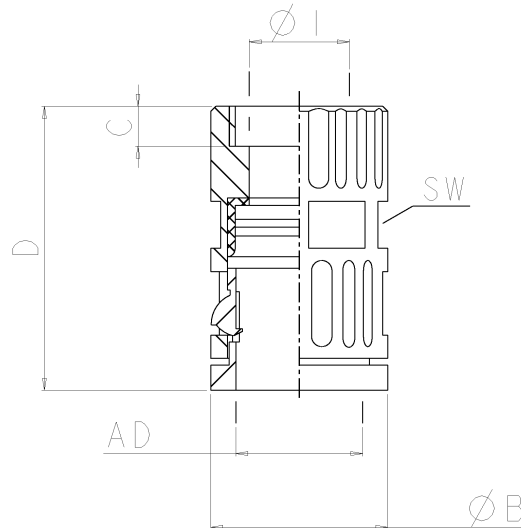
Stocking Distributor

Click to view price, real time Inventory, Delivery & Lifecycle Information:

[TE Connectivity AMP Connectors](#)
[2-969813-5](#)


For any questions, you can email us directly:

sales@integrated-circuit.com



LOC	DIST	REVISIONS							
FT	0	AENDERINGEN							
		DESCRIPTION							
		RECHTE (RECH)							
PROJECT NR. : E97-25570		P	LTR				DATE	DWN	AFWD
		A	New Drawing			21AUG97	A.L.	G.F.	
		A1	TOLERANCE CHANGED			15JUN00	A.L.	G.F.	
		B	REVISED PER 0638-0674-00			24FEB2002	EZ	SH	

1	Material: PA
2	Color: black
3	Unscaled
4	DIN 16901-140
1	Material: PA
2	Farbe: schwarz
3	Unmassstäblich
4	DIN 16901-140

	Trade Size	Thread	Length of Thread	Smallest Inner Ø	Largest Outer Ø	Total Length	Hex Width	Packaging Unit	approx. Weight
	Nenn-grösse	Gewinde	Gewinde-länge	kleinsten Innen-Ø	grössten Aussen-Ø	Gesamt-länge	Schlüssel-weite	Packungs-einheit	Gewicht
	mm	UNEF	mm	mm	mm	mm	mm	Stück Pieces	kg/100p
AMP #	AD		C	Ø I	Ø B	D	SW		
969813-5	28.5	1 3/16"-18	9.5	23.5	37	52.5	34	25	1.45
1-969813-5	28.5	1"-20	9.5	23.5	37	54	34	25	1.4
2-969813-5	28.5	1 3/8"-18	9.5	23.5	41	54	34	25	1.5
3-969813-5	28.5	1 7/16"-18	9.5	23.5	41	54	34	25	1.5
4-969813-7	28.5	15/16"-20	9.5	17	37	52.5	34	25	1.3

[illegible]