

Excellent Integrated System Limited

Stocking Distributor

Click to view price, real time Inventory, Delivery & Lifecycle Information:

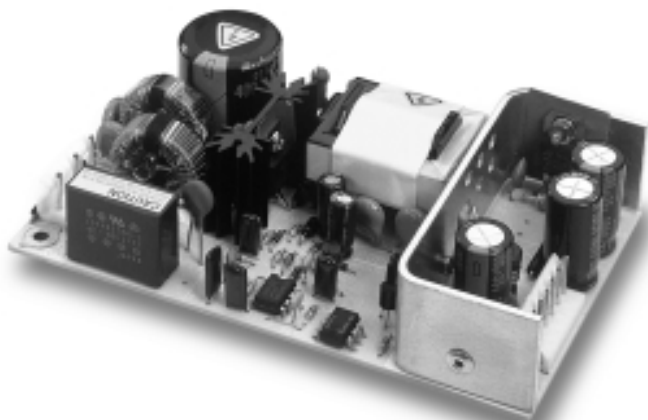
[TDK-Lambda Americas, Inc.](#)
[SCT601NONROHS](#)

For any questions, you can email us directly:

sales@integrated-circuit.com



SC40/60 Series



3 x 5" 40W to 80W AC-DC Power Supplies

- ◆ Low Cost
- ◆ Single and Multiple Outputs
- ◆ Wide Range AC Input
- ◆ Low profile
- ◆ Global Safety Agency Compliance
- ◆ Meets EN61000-4 (-2 to -6)

Key Market Segments & Applications

Computer Peripherals
 Datacom
 Point of Sale
 Test and Measurement

SC40/60 Features and Benefits

Feature	Benefit
◆ Industry standard footprint	◆ Availability to second source
◆ Broad product range	◆ Optimization of power supply to system
◆ Meets EN61000-4 immunity	◆ Greater reliability

Specifications

MODELS		SCS40	SCD40	SCT4x	SCT401	SCS60	SCD60	SCT6x	SCT601
ITEMS									
Output Power Convection	W	40		40			60		50
Output Power Forced Air	W	55		55			80		68
Main Output Adjustment	V	-5, +10% O/P 1 only			±5%	-5, +10%			±5%
Line and Load Regulation (1)	%	Output 1: ±2%, Output 2: ±5% (±7% on 24V models), Output 3: ±5%							
Hold Up Time (typical)	ms	20			16	20			13
Size (2)	in	3 x 5 x 1"				3 x 5 x 1.34"			
AC Input	-	85-265 VAC, 47-63 Hz							
Efficiency	%	Typically 70% full load at nominal AC Line							
Inrush Current Limiting	A	36A typical @230VAC cold start							
Surge Immunity	-	EN61000-4 (-2 through -6) level 3							
EMI	-	FCC Class B, EN55022 B							
Cross Regulation	%	± 2% on output 1, ±5% on outputs 2 & 3 (multiple outputs only)							
Ripple and Noise	%	1% peak to peak							
Overcurrent Protection	-	Short circuit protection, automatic recovery							
Overvoltage Protection	-	Output 1 only, < 135%							
Cooling	-	When specified with forced air cooling, flow is 300 LFM							
Operating Temp. Range	-	0 to +50°C							
Storage Temperature	-	-20 to +85°C							
Safety Agency Approval	-	UL1950, CSA950, EN60950, CE Mark							
Warranty	-	1 year							

(1) SCT401 & SCT601 Outputs 1 & 2: ±2.5%

(2) Height is specified as maximum component height

Note: See Installation Manual for full details, test methods of parameters and application notes

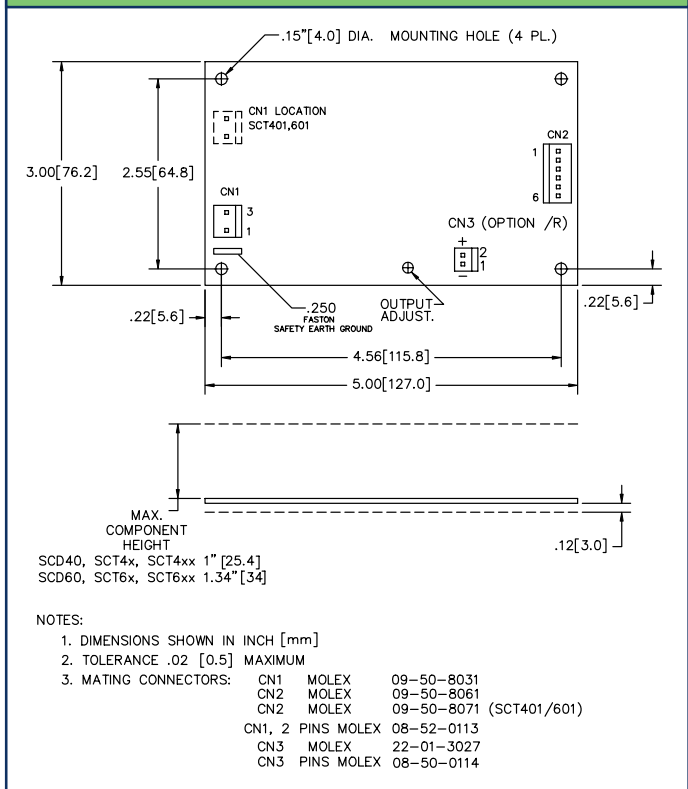


SC40/60 Series

SC Model Selector

	Model	O/P (V)	Min Load(A)	Convec. (A)	Forced Air(A)	Peak Load(A)**	
Single Output	SCS403	V1	3.3	-	8.0	11.0	12.0
	SCS405	V1	5.0	-	8.0	11.0	12.0
	SCS4012	V1	12.0	-	3.3	4.5	5.0
	SCS4015	V1	15.0	-	2.6	3.6	4.0
	SCS4024	V1	24.0	-	1.6	2.3	2.5
	SCS4028	V1	28.0	-	1.4	2.0	2.2
	SCS4048	V1	48.0	-	0.9	1.2	1.3
	SCS603	V1	3.3	-	12.0	16.0	18.0
	SCS605	V1	5.0	-	12.0	16.0	18.0
	SCS6012	V1	12.0	-	5.0	6.7	7.5
	SCS6015	V1	15.0	-	4.0	5.3	6.0
	SCS6024	V1	24.0	-	2.5	3.3	3.8
	SCS6028	V1	28.0	-	2.1	2.9	3.2
	SCS6048	V1	48.0	-	1.3	1.7	1.9
Dual Output	SCD401212	V1	12.0	0.1	1.8	2.5	-
		V2	-12.0	0.1	1.5	2.0	-
	SCD401515	V1	15.0	0.1	1.5	2.0	-
		V2	-15.0	0.1	1.2	1.6	-
	SCD601212	V1	12.0	0.2	2.75	3.7	-
		V2	-12.0	0.2	2.25	3.0	-
SCD601515	V1	15.0	0.2	2.2	2.9	-	
	V2	-15.0	0.2	1.8	2.4	-	
Triple Output	SCT42	V1	5.0	0.4	4.0	5.0	7.0
		V2	12.0	0.2	2.0	2.5	4.0
		V3	-12.0	-	0.5	0.7	1.0
	SCT43	V1	5.0	0.5	5.0	6.0	7.0
		V2	12.0	-	0.5	0.7	1.0
		V3	-12.0	-	0.5	0.7	1.0
	SCT44	V1	5.0	0.4	4.0	5.0	7.0
		V2	12.0	0.2	2.0	2.5	4.0
		V3	-5.0	-	0.5	0.7	1.0
	SCT45	V1	5.0	0.4	4.0	5.0	7.0
		V2	15.0	0.2	2.0	2.5	3.0
		V3	-15.0	-	0.5	0.7	1.0
	SCT46	V1	5.0	0.4	4.0	5.0	6.0
		V2	24.0	0.1	1.0	1.5	2.0
		V3	-12.0	-	0.5	0.7	1.0
	SCT47	V1	5.0	0.4	4.0	5.0	6.0
		V2	24.0	0.2	1.0	1.5	2.0
		V3	12.0	-	0.5	0.7	1.0
	SCT48	V1	5.0	0.4	4.0	5.0	6.0
		V2	24.0	0.1	1.0	1.5	2.0
		V3	-5.0	-	0.5	0.7	1.0
	SCT401	V1	3.3	0.4	4.0	5.0	7.0
		V2	5.0	-	2.0	2.5	4.0
		V3*	±12.0	-	0.5	0.7	1.0
SCT62	V1	5.0	0.7	7.0	8.0	10.0	
	V2	12.0	0.3	3.0	3.5	6.0	
	V3	-12.0	-	0.7	1.0	1.5	
SCT63	V1	5.0	0.7	7.0	8.0	10.0	
	V2	15.0	0.3	2.8	3.3	4.0	
	V3	-15.0	-	0.7	1.0	1.5	
SCT64	V1	5.0	0.7	7.0	8.0	10.0	
	V2	12.0	0.3	3.0	3.5	6.0	
	V3	-5.0	-	0.7	1.0	1.5	
SCT65	V1	5.0	0.7	7.0	8.0	10.0	
	V2	24.0	0.1	1.5	2.0	3.0	
	V3	12.0	-	0.7	1.0	1.5	
SCT66	V1	5.0	0.7	7.0	8.0	10.0	
	V2	24.0	0.1	1.5	2.0	3.0	
	V3	-12.0	-	0.7	1.0	1.5	
SCT67	V1	5.0	0.7	7.0	8.0	10.0	
	V2	24.0	0.1	1.5	2.0	3.0	
	V3	-5.0	-	0.7	1.0	1.5	
SCT68	V1	5.0	0.7	7.0	8.0	10.0	
	V2	15.0	0.1	3.0	3.5	3.0	
	V3	12.0	-	0.92	1.0	1.5	
SCT601	V1	3.3	0.7	7.0	8.0	9.5	
	V2	5.0	0.3	3.0	3.5	3.5	
	V3*	±12.0	-	1.0	2.0	2.0	

SC Outline Drawing



Model Selector Notes:

- * V3 output floating on SCT401 & SCT601
- ** <30s, 10% duty cycle, average power must not exceed maximum ratings

Other Lambda DC-DC Products

SC120	120W 4" x 7" Single, Dual, Triple and Quad output with PFC
ZWS	5 to 150W single output, universal input
USB & VSC	10 to 150W single output, 115VAC input

For Additional Information, please visit
www.lambdapower.com/products/sc-series.htm

