

Excellent Integrated System Limited

Stocking Distributor

Click to view price, real time Inventory, Delivery & Lifecycle Information:

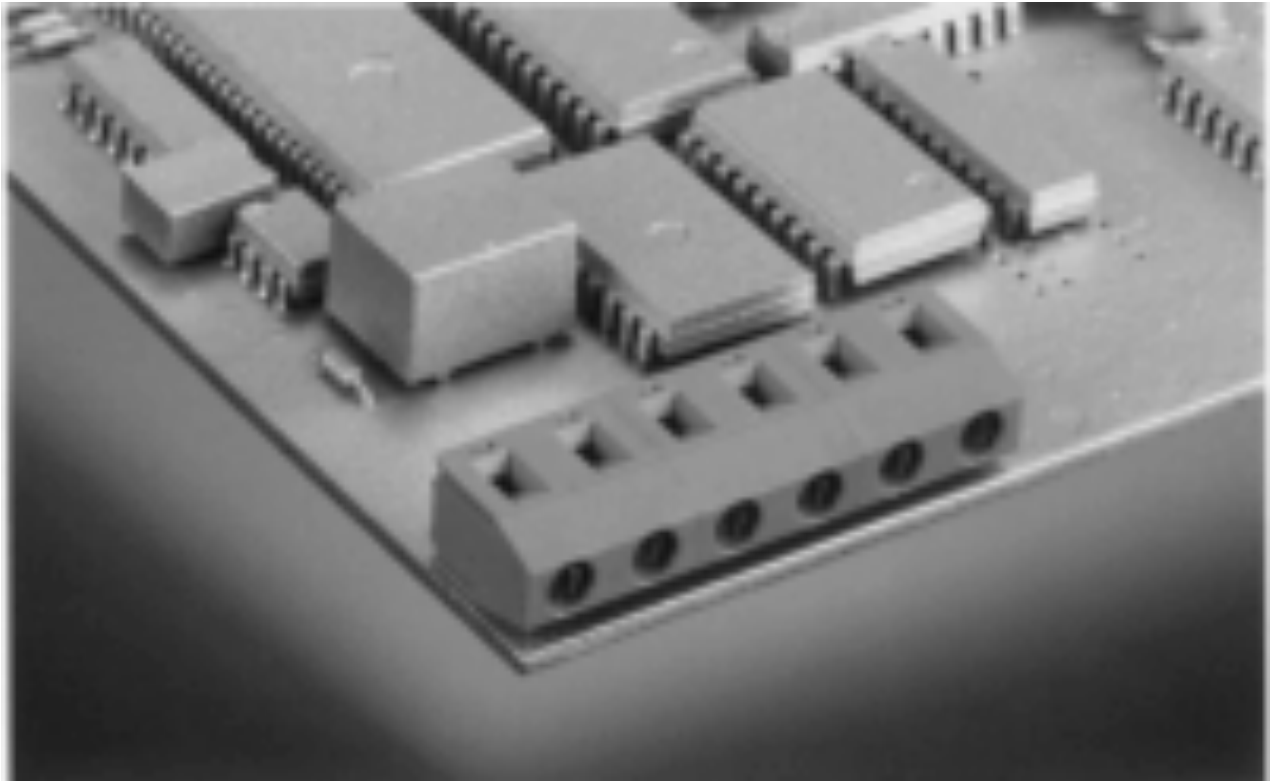
[On-Shore Technology, Inc.](#)

[ED360/2](#)

For any questions, you can email us directly:

sales@integrated-circuit.com

ED360/X



2-12 poles, Spacing 7.5 mm
insert required no. of poles **X**
How to order see page 5



Ratings:

Rated Voltage	300V	750 V
Rated Current	16 A	24 A (T60)
Wire Size	AWG 22-12	2.5 mm²
Test Voltage		3.0 kV
Rated Torque/ScrewSize		0.5 Nm/M3

Max. Rated Cross Section