



Distributor of Molex Connector Corporation: Excellent Integrated System Limited
Datasheet of 0350689722 - Connector Quick Connect Receptacle 20-22 AWG 0.187"
(4.75mm) Crimp

Contact us: sales@integrated-circuit.com Website: www.integrated-circuit.com

Excellent Integrated System Limited

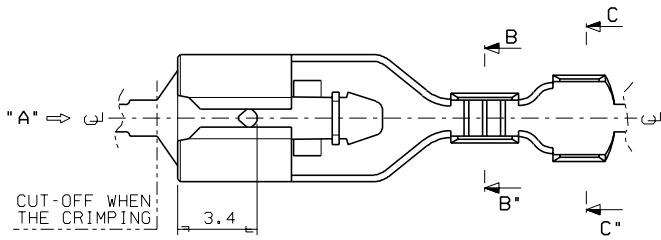
Stocking Distributor

Click to view price, real time Inventory, Delivery & Lifecycle Information:

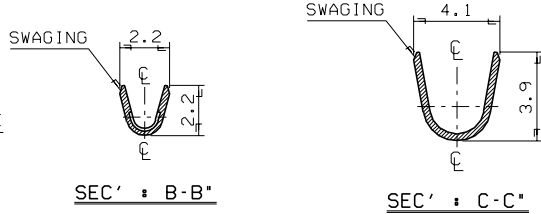
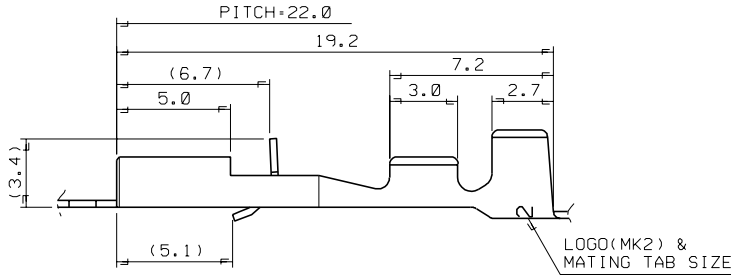
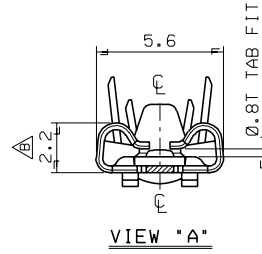
[Molex Connector Corporation](#)
[0350689722](#)

For any questions, you can email us directly:
sales@integrated-circuit.com

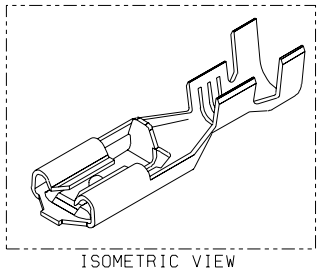
Contact us: sales@integrated-circuit.com Website: www.integrated-circuit.com



- NOTES
1. MATERIAL : BRASS, 0.3MM THICKNESS
 2. FINISH : PRE-PLATED TIN
 3. MATING TAB THICKNESS : 0.8MM
 4. RECOMMENDED LENGTH OF WIRE STRIP IS 4.4-5.0MM.
 5. APPLICABLE WIRE : AWG #22-#20
INSULATION DIA. : ϕ 1.5-2.7MM
 6. CRIMPING SPECIFICATION : CS35068



0.8
MK2



REVISED EC NO. KORI1998-0140 DRAWN: J.S.KANG 98/11/12 CHK: B.K.CHOI APPR: C.W.LEE	QUALITY SYMBOLS MAJOR CRITICAL	GENERAL TOLERANCES: (UNLESS SPECIFIED)		SCALE 6/1	DESIGN UNITS <input checked="" type="checkbox"/> mm <input type="checkbox"/> INCH	THIRD ANGLE PROJECTION	DIMENSIONS: <input type="checkbox"/> mm <input type="checkbox"/> INCH <input checked="" type="checkbox"/> mm ONLY		SHT	REV
		4 PLACES $\pm 0.$	\pm	INCH	DRAWN BY & DATE J.S.KANG 98/01/21	TITLE: .187 MP-LOCK TERMINAL(S) (FOR 0.8T TAB)				
B	DESCRIPTION REVISION	3 PLACES $\pm 0.$	\pm		CHECKED BY & DATE B.K.CHOI 98/01/21	MATERIAL NO. 35068-9722	DRAWING NO. SD-35068-9722	SHEET NO. 1 OF 1	SIZE B	MX-A3
		2 PLACES ± 0.2	\pm		APPROVED BY & DATE C.W.LEE 98/01/21					
		1 PLACE ± 0.3	\pm		CAD FILENAME S35068F.DGN					
DRAFT WHERE APPLICABLE MUST REMAIN WITHIN DIMENSIONS					THIS DRAWING CONTAINS INFORMATION THAT IS PROPRIETARY TO MOLEX INCORPORATED AND SHOULD NOT BE USED WITHOUT WRITTEN PERMISSION.					

DO NOT SCALE DRAWING DIMENSION IN METRIC

PROJECT NO. .187 MP-LOCK CONNY' DWG. NO. SD 35068-9722

SIMILAR ITEM

F

E

D

C

B

A

8

7

6

5

4

3

2

1