



Distributor of Molex Connector Corporation: Excellent Integrated System Limited
Datasheet of 0483077022 - Connector Receptacle HDMI 21 (19+2 Dummy) Position Surface
Mount Vertical

Contact us: sales@integrated-circuit.com Website: www.integrated-circuit.com

Excellent Integrated System Limited

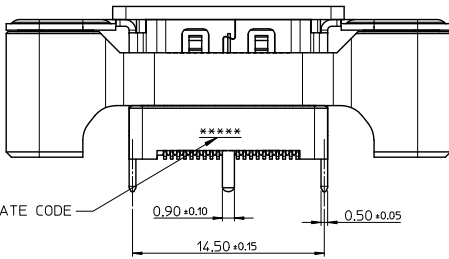
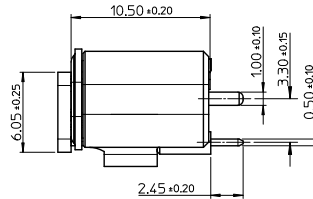
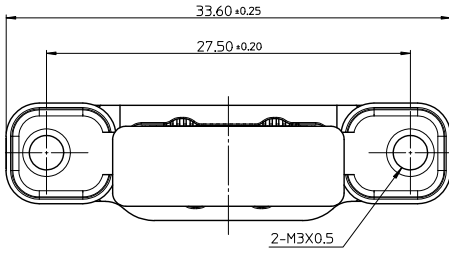
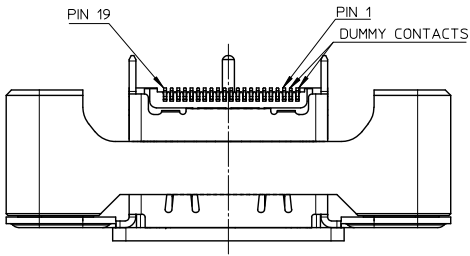
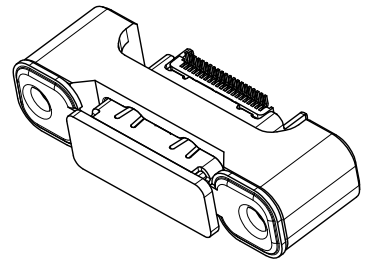
Stocking Distributor

Click to view price, real time Inventory, Delivery & Lifecycle Information:

[Molex Connector Corporation](#)
[0483077022](#)

For any questions, you can email us directly:
sales@integrated-circuit.com

Contact us: sales@integrated-circuit.com Website: www.integrated-circuit.com



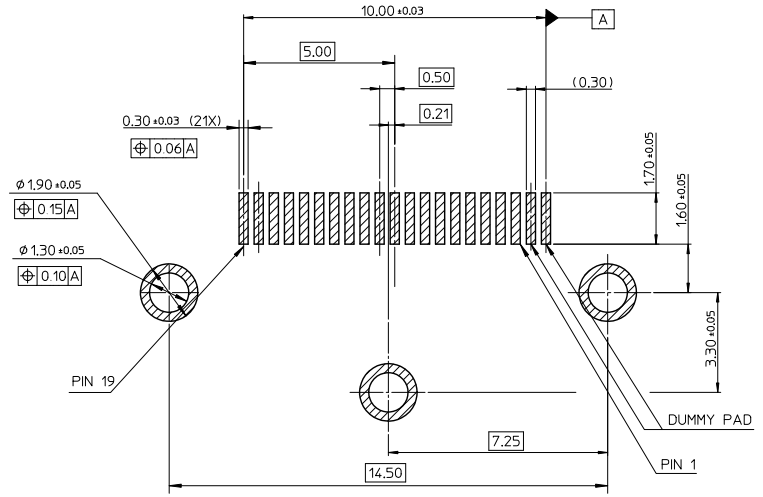
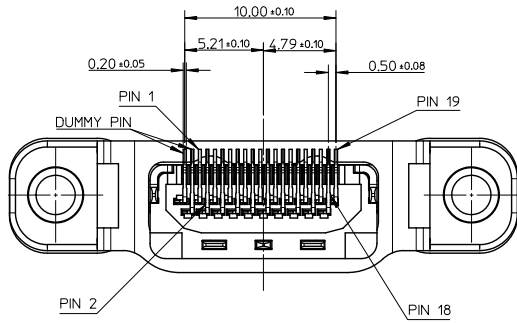
NOTES:

- MATERIAL:**
HOUSING: GLASS FILLED HEAT RESISTED RESIN, UL94V-0.
TERMINAL: COPPER ALLOY.
SHELL: COPPER ALLOY.
- PLATING:**
TERMINAL:
CONTACT AREA:
(a)GOLD FLASH PLATING,
(b)0.38 MICROMETER MIN.GOLD PLATING,
(c)0.76 MICROMETER MIN.GOLD PLATING.
SOLDER AREA: 1 MICROMETER MIN. MATTE TIN PLATING.
UNDERPLATE: 1 MICROMETER MIN. NICKEL PLATING OVERALL.
- PRODUCT SPECIFICATION REFER TO PS-48307-901.**
- PACKAGE REFER TO PK-48307-722.**
- COPLANARITY OF SOLDER TAIL TO BE 0.1 MAX..**
- THE PART CAN COMPLIANT TO ROHS DIRECTIVE 2002/95/EC AND ELV DIRECTIVE 2000/53/EC.**

3	48307-7032	(c)
2	48307-7022	(b)
1	48307-7012	(a)
ITEM NO	PART NO	PLATING SOLUTION

REVISED EC NO: SH2010-0277 D: DRW:KWEI 2010/01/19 C: CHK:DZPANG 2010/01/20 APPR: XJSONG 2010/01/23	DESCRIPTION QUALITY SYMBOLS ▽=0 ▽=0	GENERAL TOLERANCES (UNLESS SPECIFIED)		DIMENSION STYLE MM ONLY		SCALE 3.5:1	DESIGN UNITS METRIC	THIRD ANGLE PROJECTION	
		4 PLACES ±--- ±---	3 PLACES ±--- ±---	2 PLACES ±--- ±---	1 PLACE ±--- ±---	ANGULAR ±---°	DRAWN BY KLAUS WEI	DATE 2008/10/23	TITLE SALES DRAWING VERTICAL HDMI RECEPT. WITH SUPPORT
		DRAFT WHERE APPLICABLE MUST REMAIN WITHIN DIMENSIONS		MATERIAL NO. 48307-70*2	MOLEX INCORPORATED	DOCUMENT NO. SD-48307-722	SHEET NO. 1 OF 2		
		THIS DRAWING CONTAINS INFORMATION THAT IS PROPRIETARY TO MOLEX INCORPORATED AND SHOULD NOT BE USED WITHOUT WRITTEN PERMISSION							

Contact us: sales@integrated-circuit.com Website: www.integrated-circuit.com



RECOMMENDED PCB LAYOUT
(PCB THICKNESS IS 1.6mm)

REVISED EC NO. SH2010-0272 DRAWN BY: DRWAKMEI CHECKED BY: CHKCRZHANG APPR: X.J.SONG	QUALITY SYMBOLS ▽=0 ▽=0	GENERAL TOLERANCES (UNLESS SPECIFIED)		DIMENSION STYLE MM ONLY		SCALE 4:1	DESIGN UNITS METRIC	THIRD ANGLE PROJECTION		
		4 PLACES ± --- ± ---	3 PLACES ± --- ± ---	2 PLACES ± --- ± ---	1 PLACE ± --- ± ---	ANGULAR ± --- °	DRAWN BY: KLAUS WEI DATE: 2008/10/23	CHECKED BY: ROST ZHANG DATE: 2008/10/23	APPROVED BY: HARVEY WANG DATE: 2008/10/23	TITLE SALES DRAWING VERTICAL HDMI RECEPT. WITH SUPPORT
		DRAFT WHERE APPLICABLE MUST REMAIN WITHIN DIMENSIONS			MATERIAL NO. SEE SHEET 1	DOCUMENT NO. SD-48307-722	MOLEX INCORPORATED		SHEET NO. 2 OF 2	
		THIS DRAWING CONTAINS INFORMATION THAT IS PROPRIETARY TO MOLEX INCORPORATED AND SHOULD NOT BE USED WITHOUT WRITTEN PERMISSION								