

Excellent Integrated System Limited

Stocking Distributor

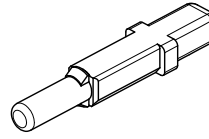
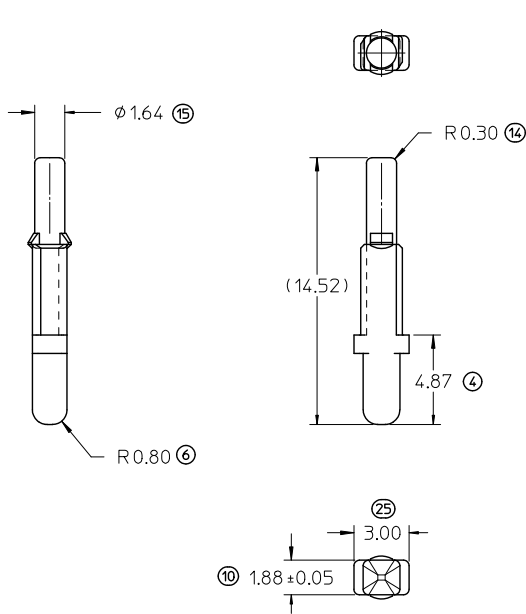
Click to view price, real time Inventory, Delivery & Lifecycle Information:

[Molex Connector Corporation](#)
[0345860001](#)

For any questions, you can email us directly:

sales@integrated-circuit.com

10 9 8 7 6 5 4 3 2 34586



NOTES: UNLESS OTHERWISE SPECIFIED

1. MATERIAL:

- A. RESIN:
 - 1. NYLON BLEND
 - 2. COLOR: STONE GREY

2. DESIGN - GENERAL:

A. THIS IS A 100% CAD GENERATED PART. THE CAD MATHEMATICAL DATA IS THE MASTER FOR THIS PART. FOR DIMENSIONAL OR ANY SPECIAL TOOLING INFORMATION NOT SHOWN ON THIS DRAWING, ANALYZE THE CAD MODEL.

B. TOLERANCES:

- a. LINEAR
 - 0.X = 0.30
 - 0.XX = 0.10
 - 0.XXX = 0.10
- b. ANGULAR $X^\circ \pm 3^\circ$
- c. $\frac{0.02}{A|B|C}$

3. SYSTEM REQUIREMENTS:

- A. THIS GROMMET SEAL PLUG MATES TO ALL HRNS CONN ASSY PART NUMBERS IDENTIFIED IN MOLEX SD-34566-001 AND SD-34576-001
- B. WHEN TESTED TO SAE/USCAR-2 REV: 3, APRIL 2001, OR GMW #3191, AUGUST 22, 2000 (DRAFT).
 - 1. GMW #3191 AUGUST 22, 2000 (DRAFT), TEMPERATURE CLASS 3, SEALING CLASS 3, VIBRATION CLASS 2
 - 2. RESTRICTED AND REPORTABLE CHEMICALS PER GMW #3059, REV: D AUGUST 2002
 - 3. MX123 0.64 GROMMET SEAL PLUG USER FORCES
 - a. INSERTION FORCE INTO LOCK POSITION: $\leq 40N$
 - b. REMOVAL FORCE FROM LOCK POSITION: $\geq 5N$ AND $\leq 40N$

EC NO: UAU2012-0906 DRW: BRH02 2012/02/08 CHKD: APPR: VKOSHY 2012/02/10 REV: A4	QUALITY SYMBOLS	GENERAL TOLERANCES (UNLESS SPECIFIED)	SCALE 5:1	DESIGN UNITS METRIC	THIRD ANGLE PROJECTION	REVISE ON CAD ONLY															
	▽-0 ▽-0	<table border="1"> <thead> <tr> <th></th> <th>mm</th> <th>INCH</th> </tr> </thead> <tbody> <tr> <td>4 PLACES</td> <td>±---</td> <td>±---</td> </tr> <tr> <td>3 PLACES</td> <td>±---</td> <td>±---</td> </tr> <tr> <td>2 PLACES</td> <td>±---</td> <td>±---</td> </tr> <tr> <td>1 PLACE</td> <td>±---</td> <td>±---</td> </tr> </tbody> </table>		mm	INCH	4 PLACES	±---	±---	3 PLACES	±---	±---	2 PLACES	±---	±---	1 PLACE	±---	±---	DIMENSION STYLE MM ONLY	TITLE		
			mm	INCH																	
		4 PLACES	±---	±---																	
3 PLACES	±---	±---																			
2 PLACES	±---	±---																			
1 PLACE	±---	±---																			
DRAFT WHERE APPLICABLE MUST REMAIN WITHIN DIMENSIONS	CHECKED BY: YLEPOTTI 2004/01/23 APPROVED BY: YLEPOTTI 2004/01/23	MOLEX INCORPORATED MATERIAL NO. 34586-0001 DOCUMENT NO. SD-34586-001 SHEET NO. 1 OF 1																			
THIS DRAWING CONTAINS INFORMATION THAT IS PROPRIETARY TO MOLEX INCORPORATED AND SHOULD NOT BE USED WITHOUT WRITTEN PERMISSION																					

8 7 6 5 4 3 2 1