

Excellent Integrated System Limited

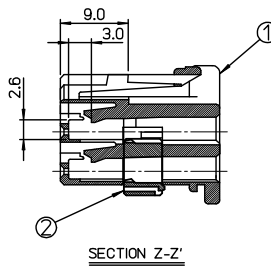
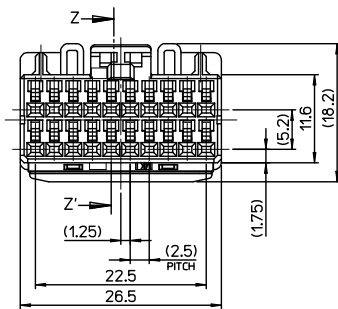
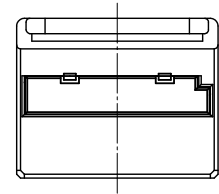
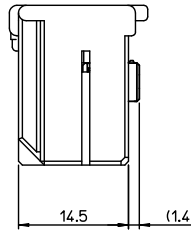
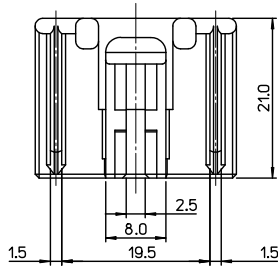
Stocking Distributor

Click to view price, real time Inventory, Delivery & Lifecycle Information:

[Molex Connector Corporation](#)
[0355642015](#)

For any questions, you can email us directly:

sales@integrated-circuit.com



NOTES

1. MATERIAL : SEE PART LIST
2. APPLICABLE HEADER : 68151-2015,68151-2016(VERTICAL)
68151-2025(RIGHT ANGLE)
3. APPLICABLE TERMINAL :

PART NO.	WIRE RANGE		MATERIAL	REMARK
	mm ²	AWG		
50654-1001	0.3-0.85	22-18	COPPER ALLOY	TIN-PLATED

<TABLE 1>

MATERIAL NO.	ORDER NO.	COLOR
355642010	35564-2010	NATURAL
355642015	35564-2015	GRAY

<PART LIST>

NO.	PART NAME	MATERIAL	REMARK
①	REC. HOUSING	POLYESTER(PBT)	NATURAL,GRAY
②	TPA	POLYESTER(PBT)	NATURAL

REVISED	EC. NO. KOP2009-0157	2009/05/28
DRAWN BY	YSIKKIM	2009/05/28
CHECKED BY	CHKHBCYOON	2009/05/28
APPR. YUNSIKKITH	YUNSIKKITH	2009/05/28
REV	A1	

QUALITY SYMBOLS	DESCRIPTION
▽=0	
▽=0	

GENERAL TOLERANCES (UNLESS SPECIFIED)		
	mm	INCH
4 PLACES	± ---	± ---
3 PLACES	± ---	± ---
2 PLACES	± 0.15	± ---
1 PLACE	± 0.25	± ---
ANGULAR ± 1 °		

DIMENSION STYLE		SCALE	TITLE
MM ONLY		2:1	040 WIRE-TO-BOARD CONN. FEMALE HOUSING ASS'Y 20P
DRAWN BY	DATE		
YSIKKIM	1999/06/02		
CHECKED BY	DATE		
BKCHOI	1999/06/02		
APPROVED BY	DATE		
CWLEE	1999/06/02		

DESIGN UNITS METRIC		THIRD ANGLE PROJECTION	
MOLEX INCORPORATED			
MATERIAL NO.	DOCUMENT NO.	SHEET NO.	
SEE TABLE 1	SD-35564-001	1 OF 1	

DRAFT WHERE APPLICABLE MUST REMAIN WITHIN DIMENSIONS

SIZE A3 THIS DRAWING CONTAINS INFORMATION THAT IS PROPRIETARY TO MOLEX INCORPORATED AND SHOULD NOT BE USED WITHOUT WRITTEN PERMISSION