

Excellent Integrated System Limited

Stocking Distributor

Click to view price, real time Inventory, Delivery & Lifecycle Information:

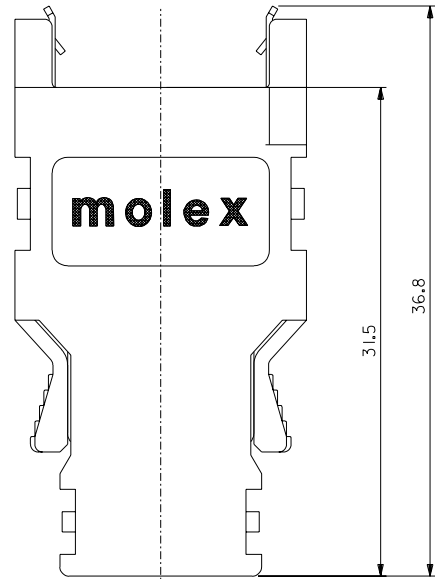
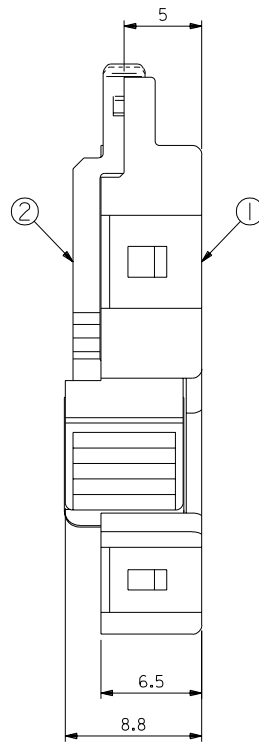
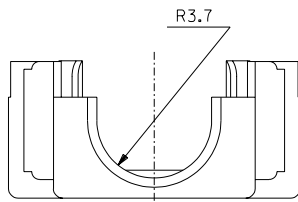
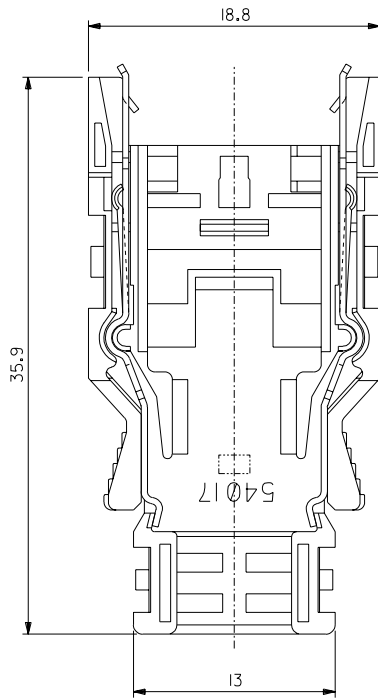
[Molex Connector Corporation](#)
[0540170615](#)

For any questions, you can email us directly:

sales@integrated-circuit.com

DWG. NO. SD-54017-0615

DIMENSIONS IN METRIC DO NOT SCALE DRAWING



- 注) 1. 材質
MATERIAL 注参照
SEE NOTES
- ① モールドカバー* A* : ガラス入りポリカーボネイト樹脂
MOLD COVER "A" : POLYCARBONATE G.F. : グレー
UL 94V-0 色: グレー
UL 94V-0 COLOR: GRAY
- ② スプリングラッチ: ステンレス鋼 t0.4
SPRING LATCH : STAINLESS STEEL t0.4
2. 適用カバーB : 54018-0605
APPLICABLE COVER B : 54018-0605

| | | | | | | | |
|-------------------------|-------|-------------------|-----------------------------|----------------------|---------------|---|----------|
| | | 材料 MATERIAL | | 注参照 SEE NOTES | | MOLEX-JAPAN CO.,LTD. 日本モレックス株式会社 | |
| | | 仕上げ FINISH | | — | | REVISE ONLY ON CAD SYSTEM | |
| | | 適用電線範囲 WIRE RANGE | | — | | TITLE 名称 | |
| | | 被覆外径 INS. RANGE | | — | | 2.0 mm PITCH I/O CONN. MOLD COVER "A" ASS'Y | |
| 角度 ANGLE | +3° | C | 変更 REVISIED | L2004-21741 | Y.M | 04/03/01 | DRAWN BY |
| 30°以上 OVER | +0.5 | B | 変更 REVISIED | L070550 | Y.M | 06/10/08 | CHK'D BY |
| 10°以上 30°未満 UNDER | +0.25 | A | 再作図 & 変更 RE-DRAWN & REVISED | L060553 | Y.M | 06/01/05 | SCALE |
| 10°未満 UNDER | +0.2 | 0 | 新規作成 RELEASED | | Y.M | 05/10/09 | 4-1 |
| 一般公差 GENERAL TOLERANCES | | | 記号 ITR | 変更内容 REVISION RECORD | DR. CHK. DATE | | |

THIS DRAWING CONTAINS INFORMATION THAT IS PROPRIETARY TO MOLEX(JAPAN) AND SHOULD NOT BE USED WITHOUT WRITTEN PERMISSION
本図面は日本モレックス(株)の所有する情報を含むもので 当社の許可なく複製を禁止する。 EN-01C(032)MXJ-32

8 7 6 5 4 3 2