

## Excellent Integrated System Limited

Stocking Distributor

Click to view price, real time Inventory, Delivery & Lifecycle Information:

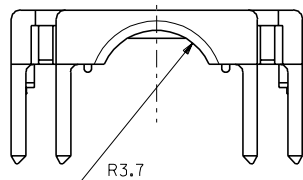
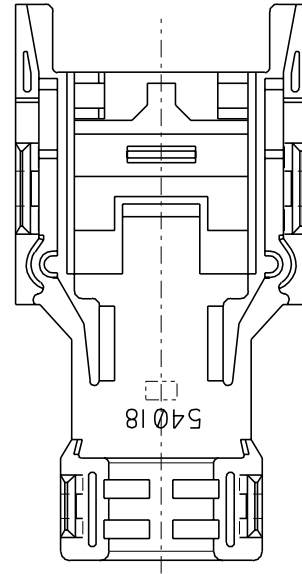
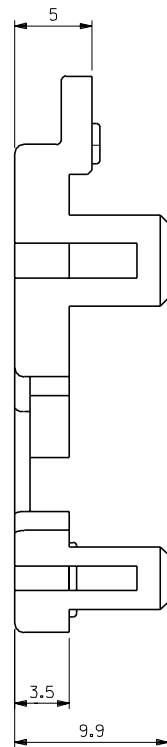
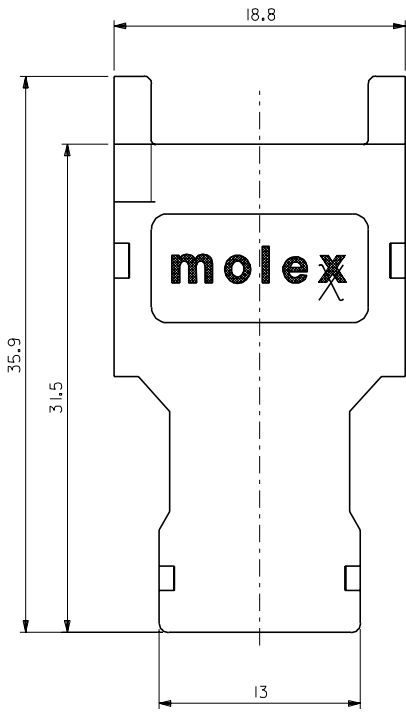
[Molex Connector Corporation](#)  
[0540180605](#)

For any questions, you can email us directly:

[sales@integrated-circuit.com](mailto:sales@integrated-circuit.com)

DWG. NO. SD-54018-0605

DIMENSIONS IN METRIC DO NOT SCALE DRAWING



注)  
NOTES  
1. 材質  
MATERIAL  
ガラス入りポリカーボネイト樹脂 UL94V-0 色: グレー  
POLYCARBONATE G.F. UL94V-0 COLOR : GRAY  
2. 適用カバー ASS'Y : 54017-0615  
APPLICABLE COVER A ASS'Y : 54017-0615

角度 ANGLE		±3°	材質 MATERIAL		注参照 SEE NOTES	MOLEX-JAPAN CO.,LTD. 日本モレックス株式会社	
30°以上 OVER	±0.3	B	変更 REVISED	1/07/0550	Y.1	96/11/01	REVISE ONLY ON CAD SYSTEM
10°以上 30°未満 UNDER	±0.25	A	再作図 & 変更 REDRAWN & REVISED	4/06/9553	Y.1	96/01/25	TITLE 名称 2.0 mm PITCH I/O CONN. MOLD COVER "B"
10°未満 UNDER	±0.2	0	◆×◆ RELEASED		H.1	96/11/19	DWG. NO. SD-54018-0605
一般公差 GENERAL TOLERANCES			社号 LTR	変更内容 REVISION RECORD	DR. CHK.	日付 DATE	REV B
DRAWN BY CHK'D BY				INS. RANGE		SCALE 4-1	

THIS DRAWING CONTAINS INFORMATION THAT IS PROPRIETARY TO MOLEX(JAPAN) AND SHOULD NOT BE USED WITHOUT WRITTEN PERMISSION  
本図面は日本モレックス(株)の所有する情報を含むもので 当社の許可なく複製を禁止する。 EN-01C(032)MXJ-32

8 7 6 5 4 3 2 1