

## Excellent Integrated System Limited

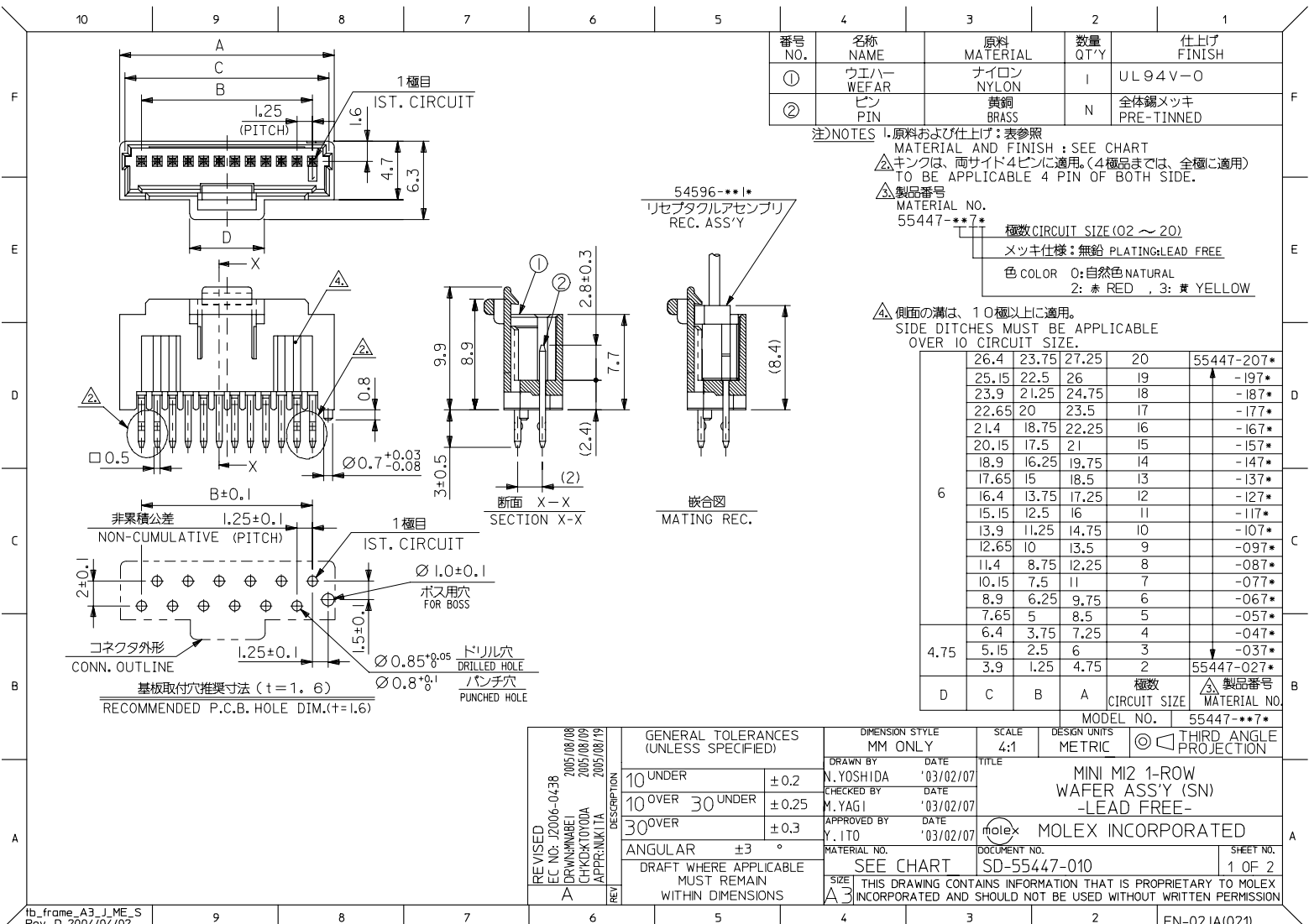
Stocking Distributor

Click to view price, real time Inventory, Delivery & Lifecycle Information:

[Molex Connector Corporation](#)  
[0554470870](#)

For any questions, you can email us directly:

[sales@integrated-circuit.com](mailto:sales@integrated-circuit.com)



| 番号 NO. | 名称 NAME    | 原料 MATERIAL | 数量 QTY | 仕上げ FINISH        |
|--------|------------|-------------|--------|-------------------|
| ①      | ウエハー WEFAR | ナイロン NYLON  | 1      | UL94V-0           |
| ②      | ピン PIN     | 黄銅 BRASS    | N      | 全体錫メッキ PRE-TINNED |

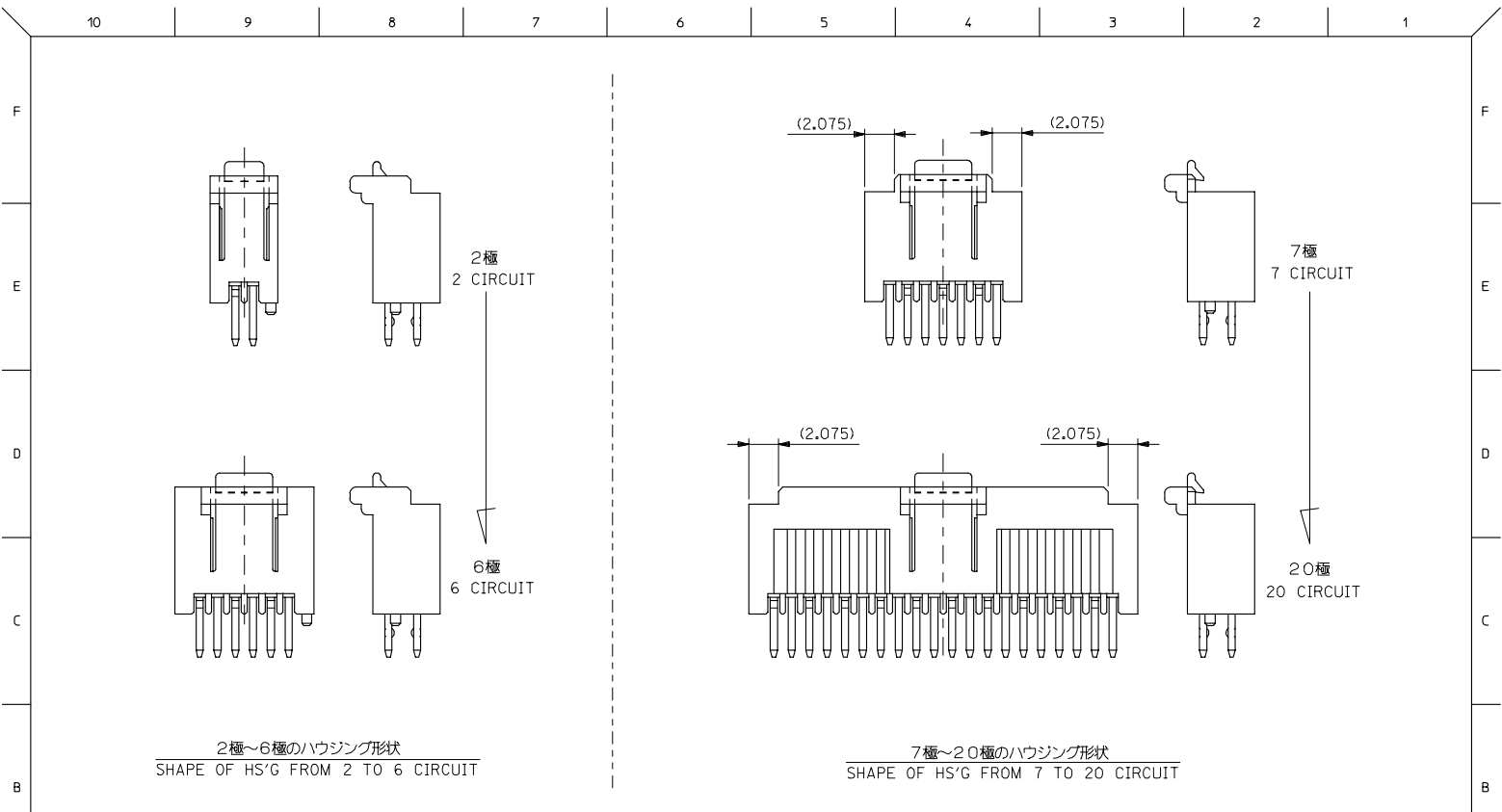
注) NOTES 1. 原料および仕上げ: 表参照  
 MATERIAL AND FINISH: SEE CHART  
 △ キングは、両サイド4ピンに適用。(4極品までは、全極品適用)  
 TO BE APPLICABLE 4 PIN OF BOTH SIDE.  
 △ 製品番号 MATERIAL NO. 55447-\*\*\*7\*  
 極数 CIRCUIT SIZE (02 ~ 20)  
 メッキ仕様: 無鉛 PLATING: LEAD FREE  
 色 COLOR 0: 自然色 NATURAL, 2: 赤 RED, 3: 黄 YELLOW

△ 側面の溝は、10極以上に適用。  
 SIDE DITCHES MUST BE APPLICABLE OVER 10 CIRCUIT SIZE.

| 6    | 26.4  | 23.75 | 27.25 | 20 | 55447-207* |
|------|-------|-------|-------|----|------------|
|      | 25.15 | 22.5  | 26    | 19 | -197*      |
|      | 23.9  | 21.25 | 24.75 | 18 | -187*      |
|      | 22.65 | 20    | 23.5  | 17 | -177*      |
|      | 21.4  | 18.75 | 22.25 | 16 | -167*      |
|      | 20.15 | 17.5  | 21    | 15 | -157*      |
|      | 18.9  | 16.25 | 19.75 | 14 | -147*      |
|      | 17.65 | 15    | 18.5  | 13 | -137*      |
|      | 16.4  | 13.75 | 17.25 | 12 | -127*      |
|      | 15.15 | 12.5  | 16    | 11 | -117*      |
|      | 13.9  | 11.25 | 14.75 | 10 | -107*      |
|      | 12.65 | 10    | 13.5  | 9  | -097*      |
|      | 11.4  | 8.75  | 12.25 | 8  | -087*      |
|      | 10.15 | 7.5   | 11    | 7  | -077*      |
|      | 8.9   | 6.25  | 9.75  | 6  | -067*      |
|      | 7.65  | 5     | 8.5   | 5  | -057*      |
| 4.75 | 6.4   | 3.75  | 7.25  | 4  | -047*      |
|      | 5.15  | 2.5   | 6     | 3  | -037*      |
|      | 3.9   | 1.25  | 4.75  | 2  | 55447-027* |

D C B A 極数 CIRCUIT SIZE 製品番号 MATERIAL NO.

| GENERAL TOLERANCES (UNLESS SPECIFIED)                |       | DIMENSION STYLE MM ONLY   |                           | SCALE 4:1  | DESIGN UNITS METRIC | THIRD ANGLE PROJECTION |
|--|-------|---|---------------------------|--|---------------------|------------------------|
| 10 UNDER   | ±0.2  | DRAWN BY N.YOSHIDA  | DATE '03/02/07            | TITLE MINI M12 1-ROW WAFER ASS'Y (SN) -LEAD FREE-<br>MOLLEX MOLEX INCORPORATED |                     |                        |
| 10 OVER 30 UNDER                                     | ±0.25 | CHECKED BY M.YAGI   | DATE '03/02/07            |  |                     |                        |
| 30 OVER  | ±0.3  | APPROVED BY Y.IITO  | DATE '03/02/07            |  |                     |                        |
| ANGULAR  | ±3°   | MATERIAL NO. SEE CHART  | DOCUMENT NO. SD-55447-010 | SHEET NO. 1 OF 2   |                     |                        |
| DRAFT WHERE APPLICABLE MUST REMAIN WITHIN DIMENSIONS |       | THIS DRAWING CONTAINS INFORMATION THAT IS PROPRIETARY TO MOLEX INCORPORATED AND SHOULD NOT BE USED WITHOUT WRITTEN PERMISSION |                           |  |                     |                        |



2極~6極のハウジング形状  
SHAPE OF HS'G FROM 2 TO 6 CIRCUIT

7極~20極のハウジング形状  
SHAPE OF HS'G FROM 7 TO 20 CIRCUIT

|  |  |                            |                     |  |                        |
|--|--|----------------------------|---------------------|--|------------------------|
| REVISIONS<br>EC NO: J2006-0438<br>DRAWN: MABEI 2005/08/08<br>CHECKED: TOYODA 2005/08/09<br>APPR: NIKITA 2005/08/19 | GENERAL TOLERANCES (UNLESS SPECIFIED)  | DIMENSION STYLE<br>MM ONLY | SCALE<br>4:1        | DESIGN UNITS<br>METRIC                                     | THIRD ANGLE PROJECTION |
|  | 10 UNDER ±0.2  | DRAWN BY<br>N. YOSHIDA     | DATE<br>'03/02/07   | TITLE<br>MINI M12 1-ROW<br>WAFER ASS'Y (SN)<br>-LEAD FREE- |                        |
|  | 10 OVER 30 UNDER ±0.25   | CHECKED BY<br>M. YAGI      | DATE<br>'03/02/07   | MOLEX INCORPORATED   |                        |
|  | 30 OVER ±0.3   | APPROVED BY<br>Y. ITO      | DATE<br>'03/02/07   | DOCUMENT NO.<br>SD-55447-010                               |                        |
|  | ANGULAR ±3°  | MATERIAL NO.<br>SEE CHART  | SHEET NO.<br>2 OF 2 |  |                        |
| DRAFT WHERE APPLICABLE<br>MUST REMAIN<br>WITHIN DIMENSIONS   | SIZE A3 THIS DRAWING CONTAINS INFORMATION THAT IS PROPRIETARY TO MOLEX<br>INCORPORATED AND SHOULD NOT BE USED WITHOUT WRITTEN PERMISSION |                            |                     |  |                        |