

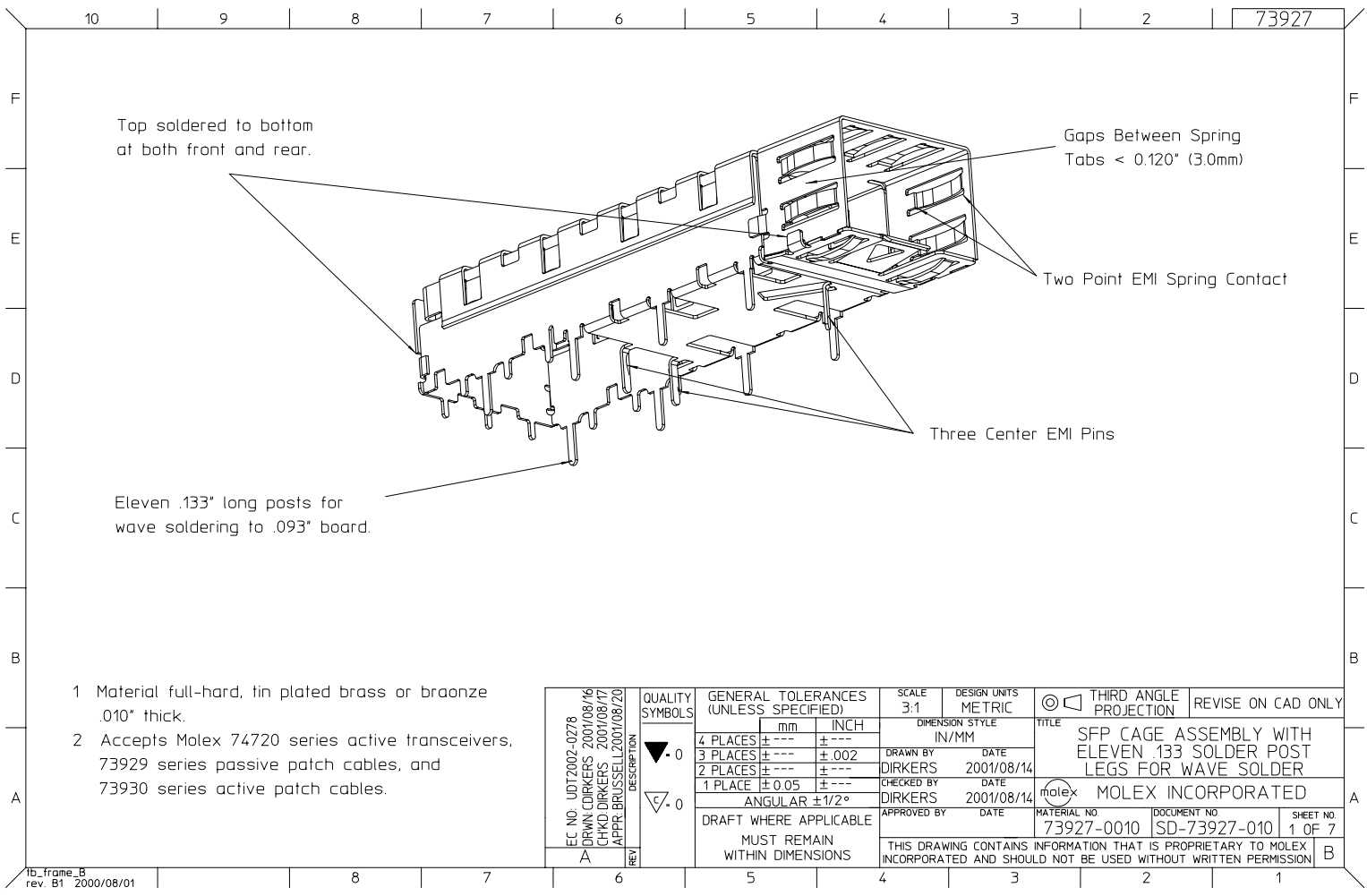
## **Excellent Integrated System Limited**

Stocking Distributor

Click to view price, real time Inventory, Delivery & Lifecycle Information:

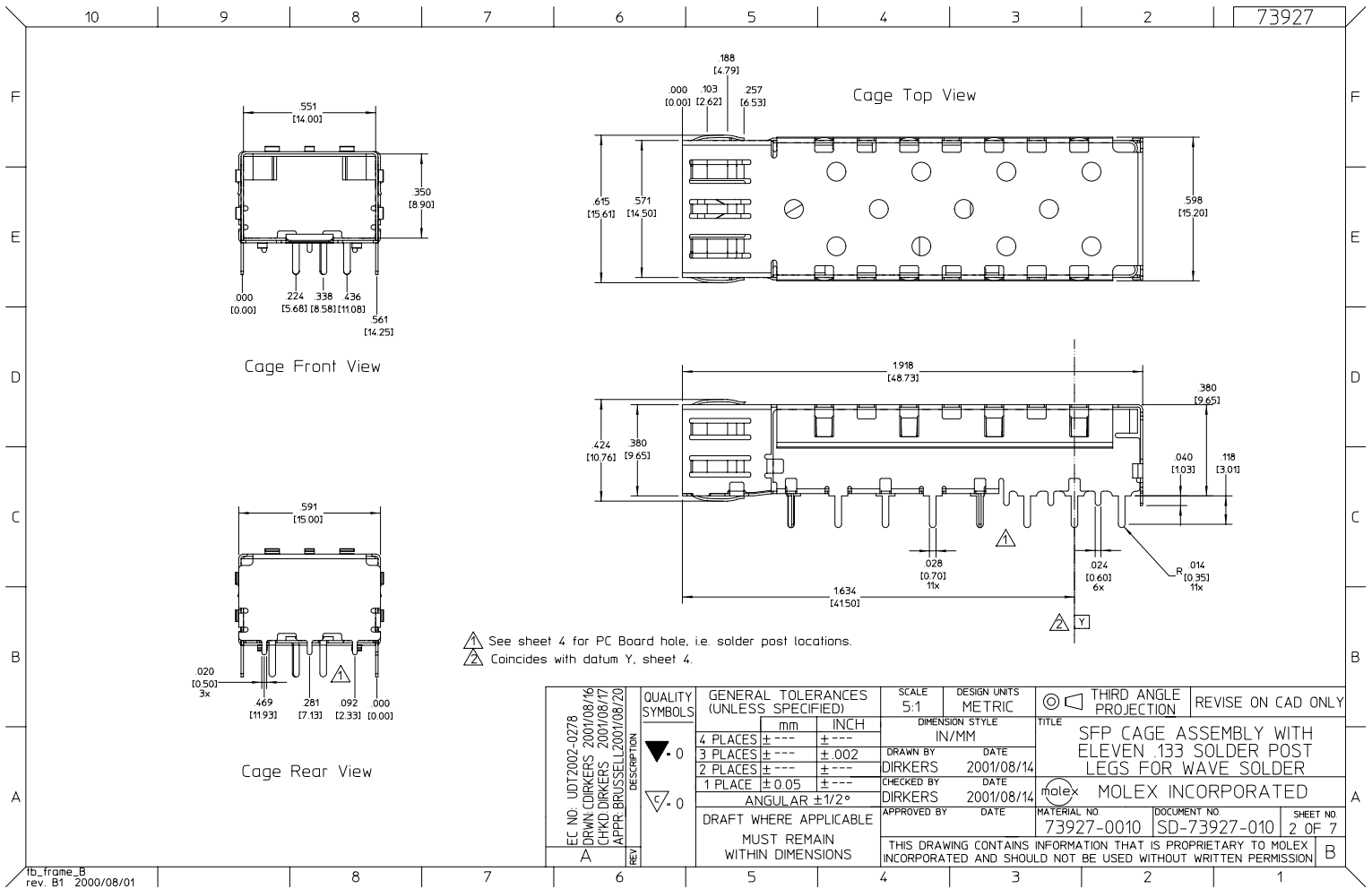
[Molex Connector Corporation](#)  
[0739270010](#)

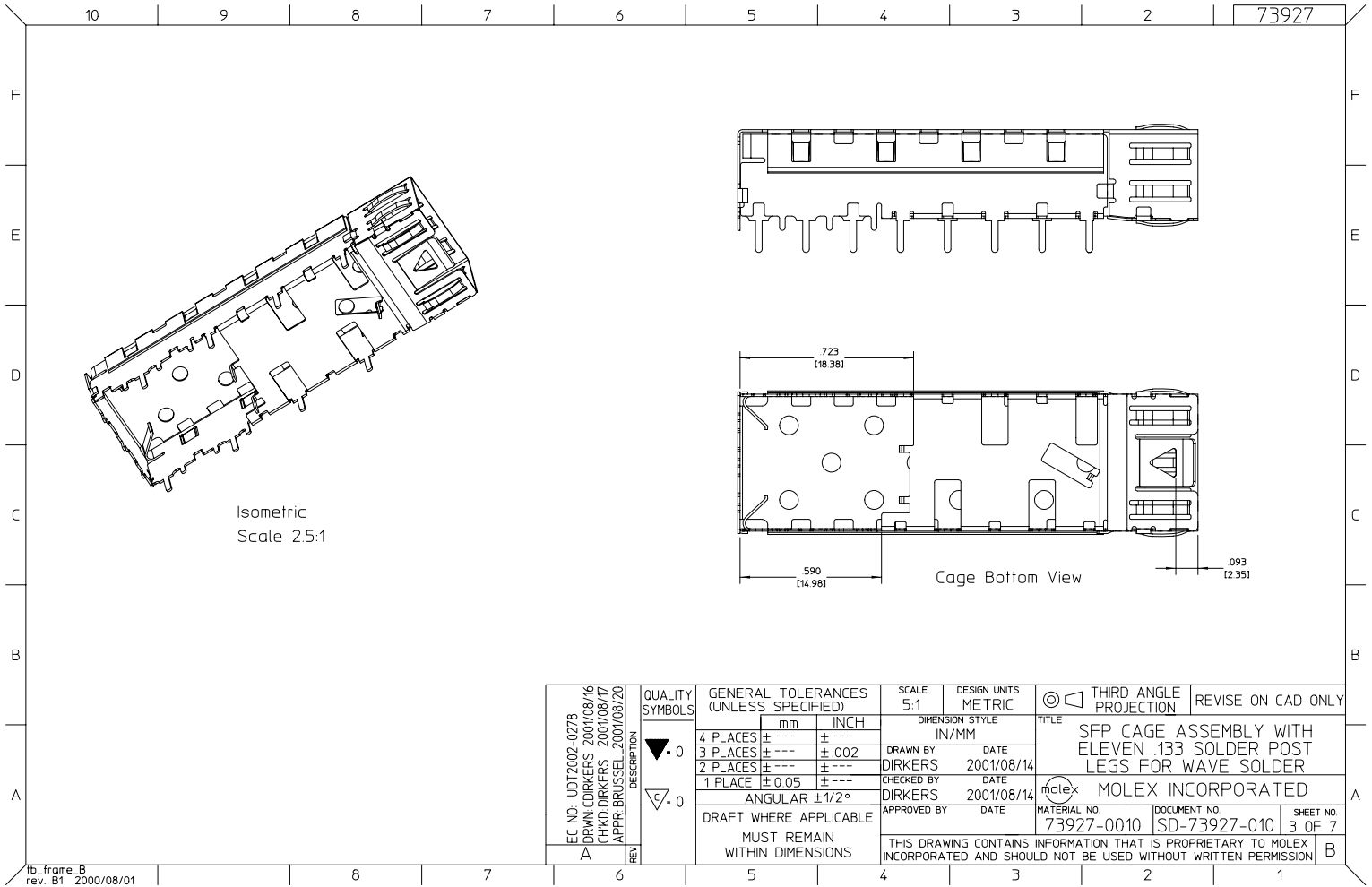
For any questions, you can email us directly:  
[sales@integrated-circuit.com](mailto:sales@integrated-circuit.com)



- 1 Material full-hard, tin plated brass or braonze .010" thick.
- 2 Accepts Molex 74720 series active transceivers, 73929 series passive patch cables, and 73930 series active patch cables.

EC NO. UDT2002-0278 DRWN:DIRKERS 2001/08/16 CHKD:DIRKERS 2001/08/17 APPR:BRUSSELL 2001/08/20 REVISION DESCRIPTION A	QUALITY SYMBOLS	GENERAL TOLERANCES (UNLESS SPECIFIED)	SCALE 3:1	DESIGN UNITS METRIC	THIRD ANGLE PROJECTION	REVISE ON CAD ONLY																									
	▼ .0 ▽ .0	<table border="1"> <thead> <tr> <th></th> <th>mm</th> <th>INCH</th> </tr> </thead> <tbody> <tr> <td>4 PLACES</td> <td>± .005</td> <td>± .0004</td> </tr> <tr> <td>3 PLACES</td> <td>± .002</td> <td>± .0008</td> </tr> <tr> <td>2 PLACES</td> <td>± .001</td> <td>± .0020</td> </tr> <tr> <td>1 PLACE</td> <td>± 0.05</td> <td>± .0020</td> </tr> </tbody> </table>		mm	INCH	4 PLACES	± .005	± .0004	3 PLACES	± .002	± .0008	2 PLACES	± .001	± .0020	1 PLACE	± 0.05	± .0020	<table border="1"> <thead> <tr> <th colspan="2">DIMENSION STYLE</th> </tr> <tr> <th>IN/MM</th> <th>DATE</th> </tr> </thead> <tbody> <tr> <td>DRAWN BY DIRKERS</td> <td>2001/08/14</td> </tr> <tr> <td>CHECKED BY DIRKERS</td> <td>2001/08/14</td> </tr> <tr> <td>APPROVED BY</td> <td>DATE</td> </tr> </tbody> </table>	DIMENSION STYLE		IN/MM	DATE	DRAWN BY DIRKERS	2001/08/14	CHECKED BY DIRKERS	2001/08/14	APPROVED BY	DATE	TITLE SFP CAGE ASSEMBLY WITH ELEVEN .133 SOLDER POST LEGS FOR WAVE SOLDER		
		mm	INCH																												
	4 PLACES	± .005	± .0004																												
3 PLACES	± .002	± .0008																													
2 PLACES	± .001	± .0020																													
1 PLACE	± 0.05	± .0020																													
DIMENSION STYLE																															
IN/MM	DATE																														
DRAWN BY DIRKERS	2001/08/14																														
CHECKED BY DIRKERS	2001/08/14																														
APPROVED BY	DATE																														
DRAFT WHERE APPLICABLE MUST REMAIN WITHIN DIMENSIONS		MOLEX INCORPORATED MATERIAL NO. 73927-0010 DOCUMENT NO. SD-73927-010 SHEET NO. 1 OF 7 THIS DRAWING CONTAINS INFORMATION THAT IS PROPRIETARY TO MOLEX INCORPORATED AND SHOULD NOT BE USED WITHOUT WRITTEN PERMISSION																													

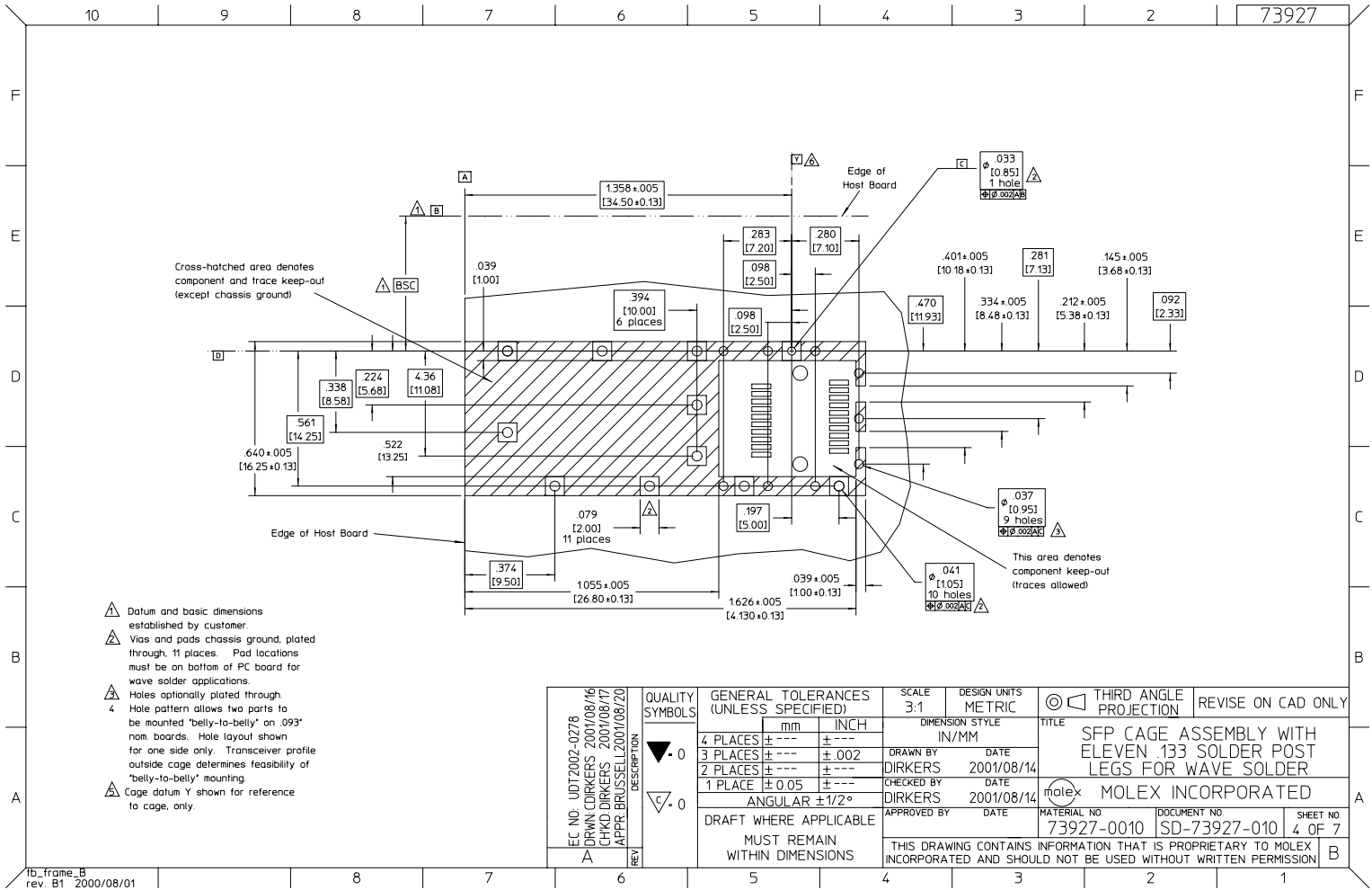




Isometric  
Scale 2.5:1

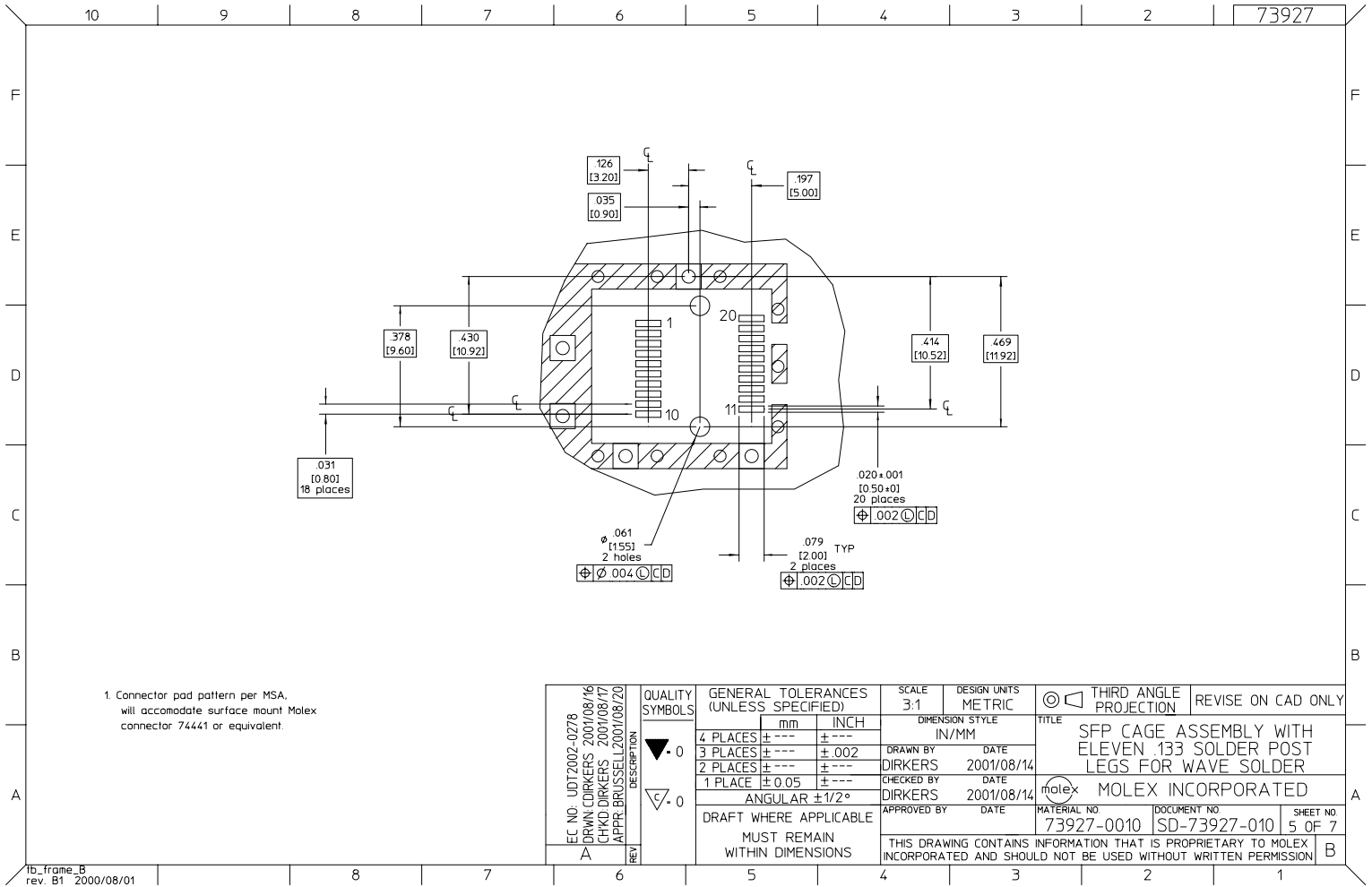
Cage Bottom View

EC NO. UDT2002-0278 DRAWN DIRKERS 2001/08/16 CHKD DIRKERS 2001/08/17 APPR. BRUSSELL 2001/08/20 REVISION DESCRIPTION A	QUALITY SYMBOLS	GENERAL TOLERANCES (UNLESS SPECIFIED)	SCALE 5:1	DESIGN UNITS METRIC	THIRD ANGLE PROJECTION	REVISE ON CAD ONLY															
	▽.0 ▽.0	<table border="1"> <tr> <th></th> <th>mm</th> <th>INCH</th> </tr> <tr> <td>4 PLACES</td> <td>±.005</td> <td>±.002</td> </tr> <tr> <td>3 PLACES</td> <td>±.005</td> <td>±.002</td> </tr> <tr> <td>2 PLACES</td> <td>±.005</td> <td>±.002</td> </tr> <tr> <td>1 PLACE</td> <td>±.005</td> <td>±.002</td> </tr> </table>		mm	INCH	4 PLACES	±.005	±.002	3 PLACES	±.005	±.002	2 PLACES	±.005	±.002	1 PLACE	±.005	±.002	DIMENSION STYLE IN/MM		TITLE SFP CAGE ASSEMBLY WITH ELEVEN 133 SOLDER POST LEGS FOR WAVE SOLDER	
			mm	INCH																	
	4 PLACES	±.005	±.002																		
3 PLACES	±.005	±.002																			
2 PLACES	±.005	±.002																			
1 PLACE	±.005	±.002																			
ANGULAR ±1/2°		DRAWN BY DIRKERS DATE 2001/08/14 CHECKED BY DIRKERS DATE 2001/08/14		Molex MOLEX INCORPORATED																	
DRAFT WHERE APPLICABLE MUST REMAIN WITHIN DIMENSIONS		APPROVED BY DATE		MATERIAL NO. 73927-0010	DOCUMENT NO. SD-73927-010	SHEET NO. 3 OF 7															
THIS DRAWING CONTAINS INFORMATION THAT IS PROPRIETARY TO MOLEX INCORPORATED AND SHOULD NOT BE USED WITHOUT WRITTEN PERMISSION																					



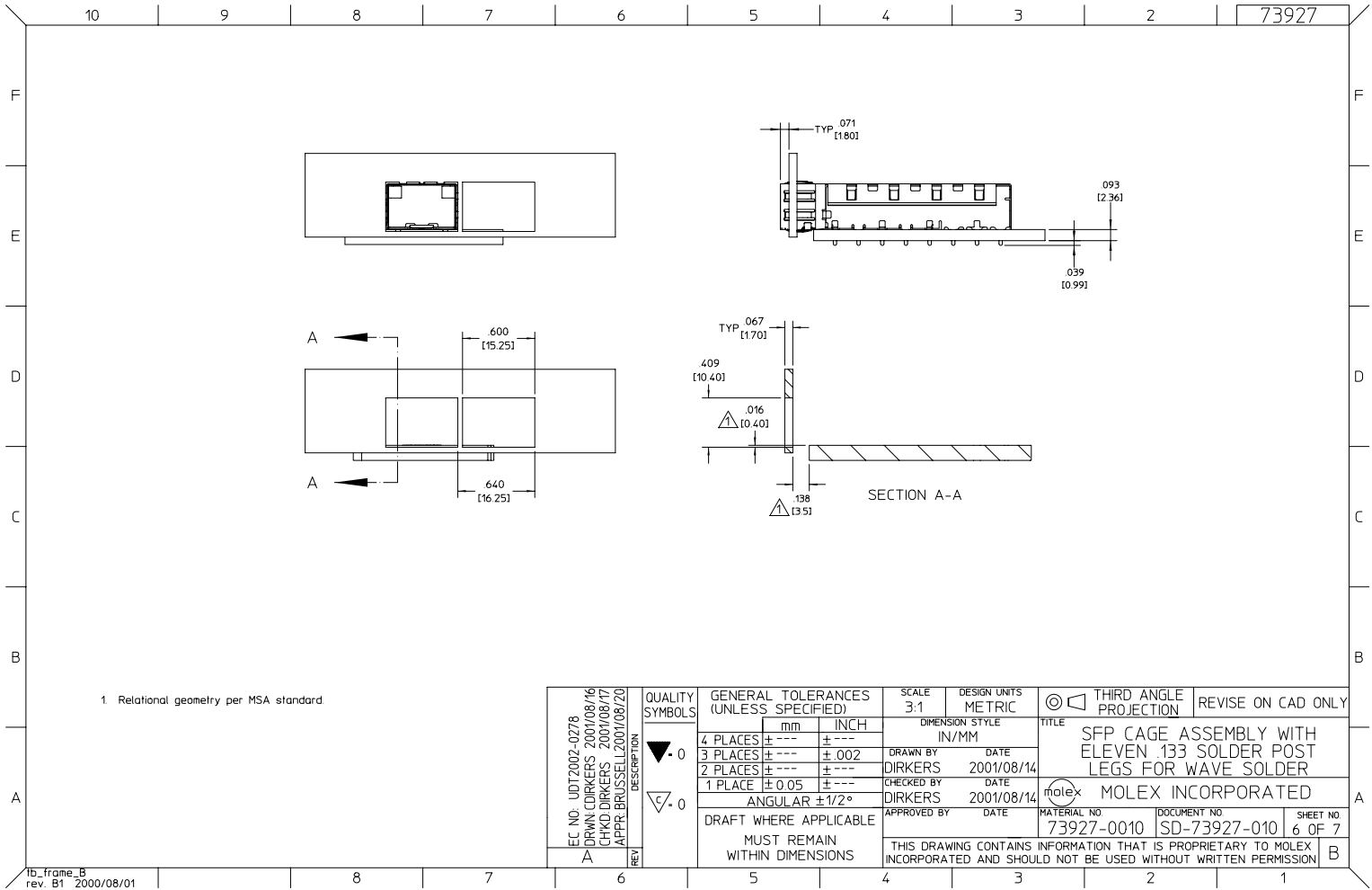
- ▲ Datum and basic dimensions established by customer.
- ▲ Vias and pads chassis ground, plated through, 11 places. Pad locations must be on bottom of PC board for wave solder applications.
- ▲ Holes optionally plated through.
- 4 Hole pattern allows two parts to be mounted 'belly-to-belly' on .093" nom. boards. Hole layout shown for one side only. Transceiver profile outside cage determines feasibility of 'belly-to-belly' mounting.
- ▲ Cage datum Y shown for reference to cage, only.

EC NO. UDT2002-0278 DRAWN DIRKERS 2001/08/16 CHKD DIRKERS 2001/08/17 APPR. BRUSSELL 2001/08/20 REV. DESCRIPTION	QUALITY SYMBOLS	GENERAL TOLERANCES (UNLESS SPECIFIED)	SCALE 3:1	DESIGN UNITS METRIC	THIRD ANGLE PROJECTION	REVISE ON CAD ONLY	
	▼ .0 ▽ .0	4 PLACES ± .005 ± .002	mm INCH	DIMENSION STYLE IN/MM		TITLE SFP CAGE ASSEMBLY WITH ELEVEN .133 SOLDER POST LEGS FOR WAVE SOLDER MOLEX INCORPORATED	
		3 PLACES ± .005 ± .002		DRAWN BY DIRKERS	DATE 2001/08/14		
		2 PLACES ± .005 ± .002		CHECKED BY DIRKERS	DATE 2001/08/14		
		1 PLACE ± 0.05 ± .005		APPROVED BY	DATE		
ANGULAR ± 1/2°			MATERIAL NO. 73927-0010	DOCUMENT NO. SD-73927-010	SHEET NO. 4 OF 7		
DRAFT WHERE APPLICABLE MUST REMAIN WITHIN DIMENSIONS			THIS DRAWING CONTAINS INFORMATION THAT IS PROPRIETARY TO MOLEX INCORPORATED AND SHOULD NOT BE USED WITHOUT WRITTEN PERMISSION				



1. Connector pad pattern per MSA.  
will accommodate surface mount Molex  
connector 74441 or equivalent.

EC NO. UDT2002-0278 DRAWN DIRKERS 2001/08/16 CHKO DIRKERS 2001/08/17 APPR. BRUSSELL 2001/08/20 REVISIONS A	QUALITY SYMBOLS	GENERAL TOLERANCES (UNLESS SPECIFIED)	SCALE 3:1	DESIGN UNITS METRIC	THIRD ANGLE PROJECTION	REVISE ON CAD ONLY
	▽.0	4 PLACES ± --- ± ---	DIMENSION STYLE IN/MM	TITLE	SFP CAGE ASSEMBLY WITH ELEVEN 133 SOLDER POST LEGS FOR WAVE SOLDER	
	▽.0	3 PLACES ± --- ± .002	DRAWN BY DIRKERS DATE 2001/08/14	MOLEX INCORPORATED MATERIAL NO. 73927-0010 DOCUMENT NO. SD-73927-010 SHEET NO. 5 OF 7		
		2 PLACES ± --- ± ---	CHECKED BY DIRKERS DATE 2001/08/14			
	1 PLACE ± 0.05 ± ---	ANGULAR ± 1/2°	APPROVED BY	THIS DRAWING CONTAINS INFORMATION THAT IS PROPRIETARY TO MOLEX INCORPORATED AND SHOULD NOT BE USED WITHOUT WRITTEN PERMISSION		
		DRAFT WHERE APPLICABLE MUST REMAIN WITHIN DIMENSIONS				



1. Relational geometry per MSA standard.

EC NO. UDT2002-0278 DRAWN: DIRKERS 2001/08/16 CHKD: DIRKERS 2001/08/17 APPR: BRUSSELL 2001/08/20 REV: A	QUALITY SYMBOLS	GENERAL TOLERANCES (UNLESS SPECIFIED)	SCALE 3:1	DESIGN UNITS METRIC	THIRD ANGLE PROJECTION	REVISE ON CAD ONLY																									
	▼ .0 ▽ .0	<table border="1"> <thead> <tr> <th></th> <th>mm</th> <th>INCH</th> </tr> </thead> <tbody> <tr> <td>4 PLACES</td> <td>± .005</td> <td>± .002</td> </tr> <tr> <td>3 PLACES</td> <td>± .005</td> <td>± .002</td> </tr> <tr> <td>2 PLACES</td> <td>± .005</td> <td>± .002</td> </tr> <tr> <td>1 PLACE</td> <td>± 0.05</td> <td>± .002</td> </tr> </tbody> </table>		mm	INCH	4 PLACES	± .005	± .002	3 PLACES	± .005	± .002	2 PLACES	± .005	± .002	1 PLACE	± 0.05	± .002	<table border="1"> <thead> <tr> <th colspan="2">DIMENSION STYLE</th> </tr> <tr> <th>IN/MM</th> <th>DATE</th> </tr> </thead> <tbody> <tr> <td>DRAWN BY DIRKERS</td> <td>2001/08/14</td> </tr> <tr> <td>CHECKED BY DIRKERS</td> <td>2001/08/14</td> </tr> <tr> <td>APPROVED BY</td> <td>DATE</td> </tr> </tbody> </table>	DIMENSION STYLE		IN/MM	DATE	DRAWN BY DIRKERS	2001/08/14	CHECKED BY DIRKERS	2001/08/14	APPROVED BY	DATE	TITLE SFP CAGE ASSEMBLY WITH ELEVEN .133 SOLDER POST LEGS FOR WAVE SOLDER		
			mm	INCH																											
		4 PLACES	± .005	± .002																											
3 PLACES	± .005	± .002																													
2 PLACES	± .005	± .002																													
1 PLACE	± 0.05	± .002																													
DIMENSION STYLE																															
IN/MM	DATE																														
DRAWN BY DIRKERS	2001/08/14																														
CHECKED BY DIRKERS	2001/08/14																														
APPROVED BY	DATE																														
DRAFT WHERE APPLICABLE MUST REMAIN WITHIN DIMENSIONS		APPROVED BY MOLEX INCORPORATED		MATERIAL NO. 73927-0010 DOCUMENT NO. SD-73927-010 SHEET NO. 6 OF 7	THIS DRAWING CONTAINS INFORMATION THAT IS PROPRIETARY TO MOLEX INCORPORATED AND SHOULD NOT BE USED WITHOUT WRITTEN PERMISSION																										

10 9 8 7 6 5 4 3 2 73927

DATE	REV	CHANGES	REASONS	APPROVAL
2001/08/14	A	DIMENSIONS ADDED	INITIAL RELEASE	CD

EC NO. UDT2002-0278 DRAWN DIRKERS 2001/08/16 CHKO DIRKERS 2001/08/17 APPR. BRUSSELL 2001/08/20 REV A	QUALITY SYMBOLS	GENERAL TOLERANCES (UNLESS SPECIFIED)	SCALE 1:1	DESIGN UNITS METRIC	THIRD ANGLE PROJECTION	REVISE ON CAD ONLY	
	▽ 0 ▽ 0	4 PLACES ± --- ± ---	mm INCH	DIMENSION STYLE IN/MM		TITLE SFP CAGE ASSEMBLY WITH ELEVEN .133 SOLDER POST LEGS FOR WAVE SOLDER	MOLEX INCORPORATED
		3 PLACES ± --- ± .002		DRAWN BY DIRKERS	DATE 2001/08/14		
		2 PLACES ± --- ± ---		CHECKED BY DIRKERS	DATE 2001/08/14		
		1 PLACE ± 0.05 ± ---		APPROVED BY	DATE		
	ANGULAR ± 1/2°	DRAFT WHERE APPLICABLE MUST REMAIN WITHIN DIMENSIONS	MATERIAL NO. 73927-0010	DOCUMENT NO. SD-73927-010	SHEET NO. 7 OF 7		
THIS DRAWING CONTAINS INFORMATION THAT IS PROPRIETARY TO MOLEX INCORPORATED AND SHOULD NOT BE USED WITHOUT WRITTEN PERMISSION							

9 8 7 6 5 4 3 2 1