

## Excellent Integrated System Limited

Stocking Distributor

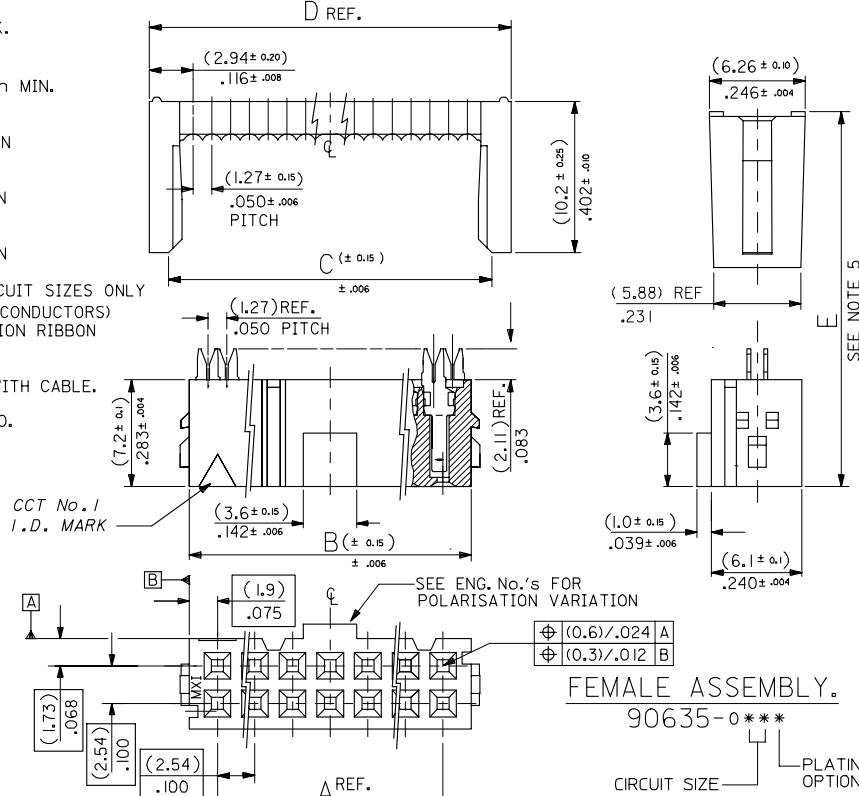
Click to view price, real time Inventory, Delivery & Lifecycle Information:

[Molex Connector Corporation](#)  
[0906351163](#)

For any questions, you can email us directly:

[sales@integrated-circuit.com](mailto:sales@integrated-circuit.com)

- NOTES: 1. MATERIAL:  
HOUSING: POLYESTER, G.F. (UL 94V-0), COLOUR - BLACK.  
TERMINAL: PHOSPHOR BRONZE.
2. TERMINAL PLATING:  
90635-\*\*\*1 : CONTACT AREA: GOLD FLASH (0.1um)/ 4uin MIN.  
I.D. AREA: TIN (lum)/ 39uin MIN. OVER  
NICKEL (lum)/ 39uin MIN.  
90635-\*\*\*2 :CONTACT AREA: GOLD (0.76um)/ 30uin MIN  
I.D. AREA: TIN (lum)/ 39uin MIN. OVER  
NICKEL (lum)/ 39uin MIN.  
90635-\*\*\*3 :CONTACT AREA: GOLD (0.38um)/ 15uin MIN  
I.D. AREA: TIN (lum)/ 39uin MIN. OVER  
NICKEL (lum)/ 39uin MIN.  
90635-\*\*\*4 :CONTACT AREA: GOLD (0.5lum)/ 20uin MIN  
I.D. AREA: TIN (lum)/ 39uin MIN. OVER  
NICKEL (lum)/ 39uin MIN.. 20 & 50 CIRCUIT SIZES ONLY
3. FOR USE WITH No. 26 & 28 AWG STRANDED WIRE (7 CONDUCTORS)  
AND No. 28 SOLID WIRE 1.14/(.045) DIA. MAX. INSULATION RIBBON  
CABLE WITH 1.27/(.050) CENTERS.
4. MATING STRAIN RELIEF: MOLEX No. 90170.  
5. DIMENSION "E" IS TOTAL HEIGHT AFTER ASSEMBLED WITH CABLE.  
E= 10.5/(.413) REF. WITHOUT STRAIN RELIEF.  
E= (15.2)/.598 MAX. WITH STRAIN RELIEF No. 90170.  
(14.5)/.571 REF. WHEN COMPRESSED .
6. FOR PRODUCT SPECIFICATION, SEE PS 99020-0015.



64	90635-#64*	(78.74) 3.100	(82.54) 3.250	(83.31) 3.280	(85.88) 3.381
60	90635-#60*	(73.66) 2.900	(77.46) 3.050	(78.23) 3.080	(80.80) 3.181
50	90635-#50*	(60.96) 2.400	(64.76) 2.55	(65.53) 2.580	(68.10) 2.681
40	90635-#40*	(48.26) 1.900	(52.06) 2.050	(52.83) 2.080	(55.40) 2.181
34	90635-#34*	(40.64) 1.600	(44.44) 1.750	(45.21) 1.780	(47.78) 1.881
30	90635-#30*	(35.56) 1.400	(39.36) 1.550	(40.13) 1.580	(42.70) 1.681
26	90635-#26*	(30.48) 1.200	(34.28) 1.350	(35.05) 1.380	(37.62) 1.481
24	90635-#24*	(27.94) 1.100	(31.74) 1.250	(32.51) 1.280	(35.08) 1.381
20	90635-#20*	(22.86) .900	(26.66) 1.050	(27.43) 1.080	(30.00) 1.181
16	90635-#16*	(17.78) .700	(21.58) .850	(22.35) .880	(24.92) .981
14	90635-#14*	(15.24) .600	(19.04) .750	(19.81) .780	(22.38) .881
10	90635-#10*	(10.16) .400	(13.96) .550	(14.73) .580	(17.30) .681
NO. OF EXT.	ENG. NO.	A	B	C	D REF.

QUALITY SYMBOLS

GENERAL TOLERANCES (UNLESS SPECIFIED)

	mm	INCH
4 PLACES	± .15	± .005
3 PLACES	± .10	± .003
2 PLACES	± .075	± .002
1 PLACE	± .05	± .001
ANGULAR	± .5°	± .010°

DRAFT WHERE APPLICABLE MUST REMAIN WITHIN DIMENSIONS

REMOVED FOR INFORMATION  
FORM NO. 2007-0495  
DRAWN BY: 2006/12/06  
CHKD: 2006/12/07  
APPROVED BY: 2006/12/07

QUALITY SYMBOLS

GENERAL TOLERANCES (UNLESS SPECIFIED)

DIMENSION STYLE: MM/IN

SCALE: 4:1

DESIGN UNITS: METRIC

THIRD ANGLE PROJECTION

DRAWN BY: POB DATE: 1990/09/25

CHECKED BY: JDENNEHY DATE: 2005/08/10

APPROVED BY: JDENNEHY DATE: 2005/08/10

TITLE: QIK FLECS SINGLE BEAM FEMALE ASSEMBLY

MATERIAL NO. SEE CHART

DOCUMENT NO. SDA-90635

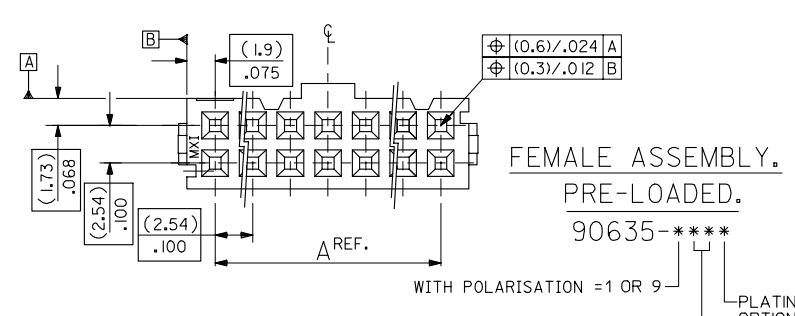
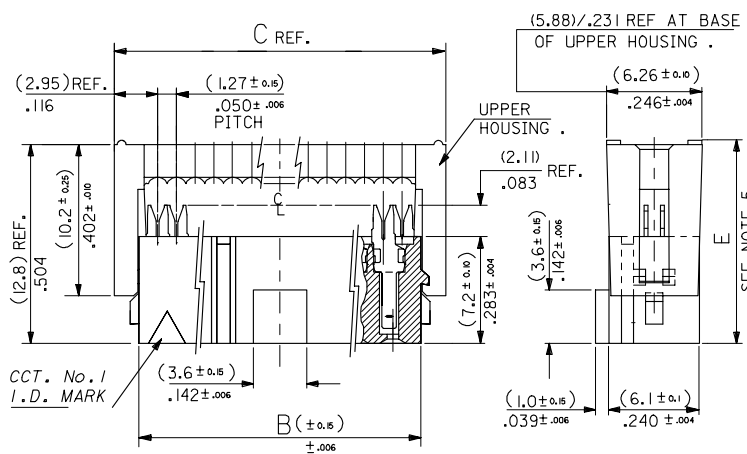
MOLEX INCORPORATED

THIS DRAWING CONTAINS INFORMATION THAT IS PROPRIETARY TO MOLEX INCORPORATED AND SHOULD NOT BE USED WITHOUT WRITTEN PERMISSION

SHEET NO. 1 OF 3

10 9 8 7 6 5 4 3 2 1

- NOTES: 1. MATERIAL:  
HOUSING: POLYESTER, G.F. (UL 94V-0), COLOUR - BLACK.  
TERMINAL: PHOSPHOR BRONZE.
2. TERMINAL PLATING:  
90635-\*\*\*1: CONTACT AREA: GOLD FLASH (0.1um)/ 4uIn MIN.  
I.D. AREA: TIN (1um)/ 39uIn MIN. OVER  
NICKEL (1um)/ 39uIn MIN.  
90635-\*\*\*2: CONTACT AREA: GOLD (0.76um)/ 30uIn MIN  
I.D. AREA: TIN (1um)/ 39uIn MIN. OVER  
NICKEL (1um)/ 39uIn MIN.  
90635-\*\*\*3: CONTACT AREA: GOLD (0.38um)/ 15uIn MIN  
I.D. AREA: TIN (1um)/ 39uIn MIN. OVER  
NICKEL (1um)/ 39uIn MIN.  
90635-\*\*\*4: CONTACT AREA: GOLD (0.51um)/ 20uIn MIN  
I.D. AREA: TIN (1um)/ 39uIn MIN. OVER  
NICKEL (1um)/ 39uIn MIN.  
20 & 50 CIRCUIT SIZES ONLY.
3. FOR USE WITH No. 26 & 28 AWG STRANDED WIRE (7 CONDUCTORS)  
AND No. 28 SOLID WIRE 1.14(.045) DIA. MAX. INSULATION RIBBON  
CABLE WITH 1.27(.050) CENTERS.
4. MATING STRAIN RELIEF: MOLEX No. 90170.
5. DIMENSION 'E' IS TOTAL HEIGHT AFTER ASSEMBLED WITH CABLE.  
E = 10.5(.413) REF. WITHOUT STRAIN RELIEF.  
E = (15.2)/.598 MAX. WITH STRAIN RELIEF No. 90170.  
(14.5)/.571 REF. WHEN COMPRESSED.
6. FOR PRODUCT SPECIFICATION, SEE PS 99020-0015.



64	90635-64*	(78.74) 3.100	(82.54) 3.250	(85.88) 3.381
60	90635-60*	(73.66) 2.900	(77.46) 3.050	(80.80) 3.181
50	90635-50*	(60.96) 2.400	(64.76) 2.55	(68.10) 2.681
40	90635-40*	(48.26) 1.900	(52.06) 2.050	(55.40) 2.181
	90635-9402 (CUSTOMER SPECIFIC)			
34	90635-34*	(40.64) 1.600	(44.44) 1.750	(47.78) 1.881
30	90635-30*	(35.56) 1.400	(39.36) 1.550	(42.70) 1.681
26	90635-26*	(30.48) 1.200	(34.28) 1.350	(37.62) 1.481
24	90635-24*	(27.94) 1.100	(31.74) 1.250	(35.08) 1.381
20	90635-20*	(22.86) .900	(26.66) 1.050	(30.00) 1.181
16	90635-16*	(17.78) .700	(21.58) .850	(24.92) .981
14	90635-14*	(15.24) .600	(19.04) .750	(22.38) .881
10	90635-10*	(10.16) .400	(13.96) .550	(17.30) .681
NO. OF CKT.	ENG. NO.	A	B	C

REMOVED OPTION EC NO: E2007-0495 DRAWN BY: BRYAN CHKD: JDN APPROVED: JDN	DESCRIPTION	QUALITY SYMBOLS	GENERAL TOLERANCES (UNLESS SPECIFIED)	DIMENSION STYLE	SCALE	DESIGN UNITS	THIRD ANGLE PROJECTION
		▽=0 ▽=0	mm INCH	MM/IN	4:1	METRIC	
			4 PLACES ± --- ± --- 3 PLACES ± --- ± --- 2 PLACES ± --- ± --- 1 PLACE ± --- ± --- ANGULAR ± --- °	DRAWN BY: POB CHECKED BY: JDENNEHY APPROVED BY: JDENNEHY	DATE: 1990/09/25 DATE: 2005/08/10 DATE: 2005/08/10	TITLE: QIK FLECS SINGLE BEAM FEMALE ASSEMBLY, PRE-LOADED	
			DRAFT WHERE APPLICABLE MUST REMAIN WITHIN DIMENSIONS	MATERIAL NO. SEE CHART SIZE: A3	DOCUMENT NO. SDA-90635	MOLEX INCORPORATED	SHEET NO. 2 OF 3
THIS DRAWING CONTAINS INFORMATION THAT IS PROPRIETARY TO MOLEX INCORPORATED AND SHOULD NOT BE USED WITHOUT WRITTEN PERMISSION							

9 8 7 6 5 4 3 2 1