

Excellent Integrated System Limited

Stocking Distributor

Click to view price, real time Inventory, Delivery & Lifecycle Information:

[Molex Connector Corporation](#)
[0906351261](#)

For any questions, you can email us directly:

sales@integrated-circuit.com

NOTES: 1. MATERIAL:

HOUSING: POLYESTER, G.F. (UL 94V-0), COLOUR - BLACK.
TERMINAL: PHOSPHOR BRONZE.

2. TERMINAL PLATING:

- 90635-***1 : CONTACT AREA: GOLD FLASH (0.1um)/ 4uin MIN.
I.D. AREA: TIN (lum)/ 39uin MIN. OVER
NICKEL (lum)/ 39uin MIN.
- 90635-***2 : CONTACT AREA: GOLD (0.76um)/ 30uin MIN
I.D. AREA: TIN (lum)/ 39uin MIN. OVER
NICKEL (lum)/ 39uin MIN.
- 90635-***3 : CONTACT AREA: GOLD (0.38um)/ 15uin MIN
I.D. AREA: TIN (lum)/ 39uin MIN. OVER
NICKEL (lum)/ 39uin MIN.
- 90635-***4 : CONTACT AREA: GOLD (0.5lum)/ 20uin MIN
I.D. AREA: TIN (lum)/ 39uin MIN. OVER
NICKEL (lum)/ 39uin MIN.. 20 & 50 CIRCUIT SIZES ONLY

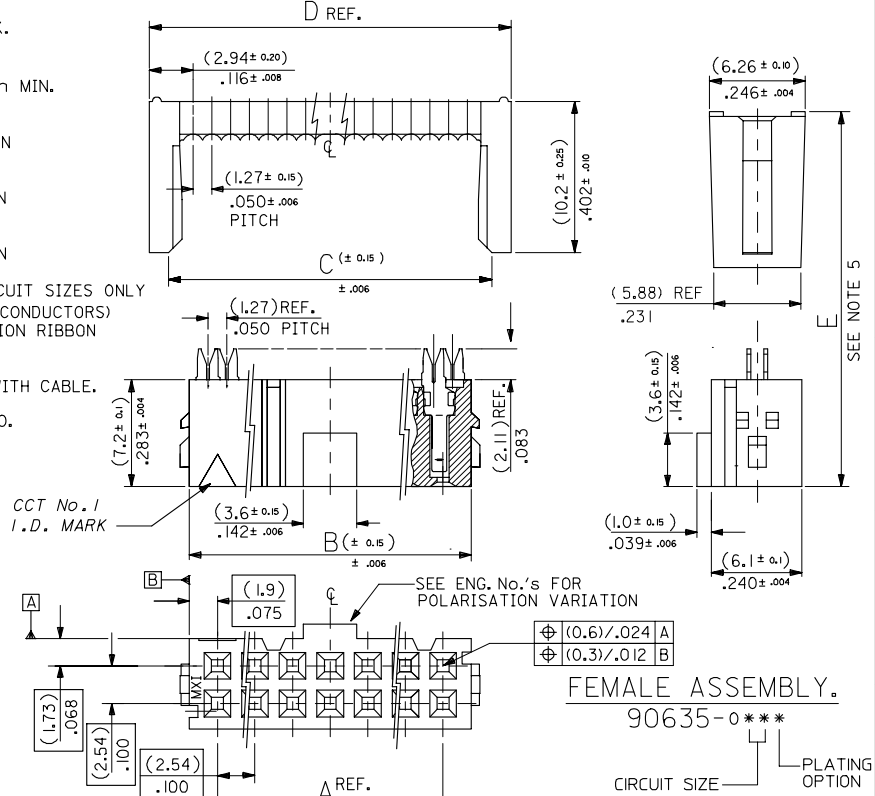
3. FOR USE WITH No. 26 & 28 AWG STRANDED WIRE (7 CONDUCTORS)
AND No. 28 SOLID WIRE 1.14/(.045) DIA. MAX. INSULATION RIBBON
CABLE WITH 1.27/(.050) CENTERS.

4. MATING STRAIN RELIEF: MOLEX No. 90170.

5. DIMENSION "E" IS TOTAL HEIGHT AFTER ASSEMBLED WITH CABLE.
E = 10.5/(.413) REF. WITHOUT STRAIN RELIEF.
E = (15.2)/.598 MAX. WITH STRAIN RELIEF No. 90170.
(14.5)/.571 REF. WHEN COMPRESSED .

6. FOR PRODUCT SPECIFICATION, SEE PS 99020-0015.

		(78.74)	(82.54)	(83.31)	(85.88)
64	90635-#64*	3.100	3.250	3.280	3.381
60	90635-#60*	(73.66)	(77.46)	(78.23)	(80.80)
		2.900	3.050	3.080	3.181
50	90635-#50*	(60.96)	(64.76)	(65.53)	(68.10)
		2.400	2.55	2.580	2.681
40	90635-#40*	(48.26)	(52.06)	(52.83)	(55.40)
		1.900	2.050	2.080	2.181
34	90635-#34*	(40.64)	(44.44)	(45.21)	(47.78)
		1.600	1.750	1.780	1.881
30	90635-#30*	(35.56)	(39.36)	(40.13)	(42.70)
		1.400	1.550	1.580	1.681
26	90635-#26*	(30.48)	(34.28)	(35.05)	(37.62)
		1.200	1.350	1.380	1.481
24	90635-#24*	(27.94)	(31.74)	(32.51)	(35.08)
		1.100	1.250	1.280	1.381
20	90635-#20*	(22.86)	(26.66)	(27.43)	(30.00)
		.900	1.050	1.080	1.181
16	90635-#16*	(17.78)	(21.58)	(22.35)	(24.92)
		.700	.850	.880	.981
14	90635-#14*	(15.24)	(19.04)	(19.81)	(22.38)
		.600	.750	.780	.881
10	90635-#10*	(10.16)	(13.96)	(14.73)	(17.30)
		.400	.550	.580	.681
NO. OF EXT.	ENG. NO.	A	B	C	D REF.



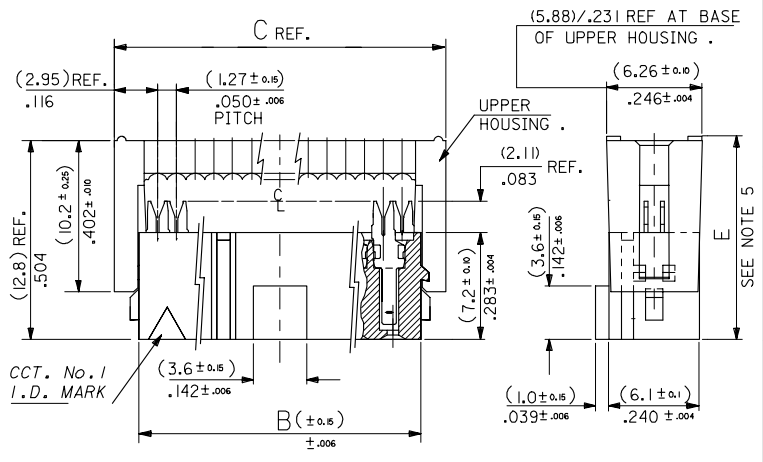
FEMALE ASSEMBLY.
90635-0***

CIRCUIT SIZE PLATING OPTION
(DOES NOT APPLY TO VOIDED OPTIONS)

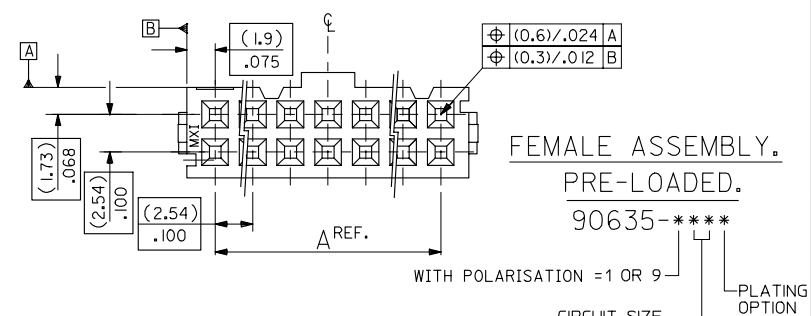
REMOVED FOR IDENTIFICATION FORM NO. 2007-0495 DRAWN BY: 2006/12/06 CHKD: 2006/12/07 APPROVED: 2006/12/07	QUALITY SYMBOLS	GENERAL TOLERANCES (UNLESS SPECIFIED)	DIMENSION STYLE	SCALE	DESIGN UNITS	THIRD ANGLE PROJECTION
	▽=0	mm INCH	MM/IN	4:1	METRIC	
	▽=0	4 PLACES ± --- ± ---	DRAWN BY	DATE	TITLE	
		3 PLACES ± --- ± ---	POB	1990/09/25	QIK FLECS SINGLE BEAM FEMALE ASSEMBLY	
	2 PLACES ± --- ± ---	CHECKED BY	DATE			
	1 PLACE ± --- ± ---	JDENNEHY	2005/08/10			
	ANGULAR ± --- °	APPROVED BY	DATE			
		JDENNEHY	2005/08/10			
	DRAFT WHERE APPLICABLE MUST REMAIN WITHIN DIMENSIONS	MATERIAL NO.	DOCUMENT NO.			
		SEE CHART	SDA-90635			
		THIS DRAWING CONTAINS INFORMATION THAT IS PROPRIETARY TO MOLEX INCORPORATED AND SHOULD NOT BE USED WITHOUT WRITTEN PERMISSION				

10 9 8 7 6 5 4 3 2 1

- NOTES: 1. MATERIAL:
HOUSING: POLYESTER, G.F. (UL 94V-0), COLOUR - BLACK.
TERMINAL: PHOSPHOR BRONZE.
2. TERMINAL PLATING:
90635-***1 : CONTACT AREA: GOLD FLASH (0.1um)/ 4uIn MIN.
I.D. AREA: TIN (1um)/ 39uIn MIN. OVER
NICKEL (1um)/ 39uIn MIN.
90635-***2 : CONTACT AREA: GOLD (0.76um)/ 30uIn MIN
I.D. AREA: TIN (1um)/ 39uIn MIN. OVER
NICKEL (1um)/ 39uIn MIN.
90635-***3 : CONTACT AREA: GOLD (0.38um)/ 15uIn MIN
I.D. AREA: TIN (1um)/ 39uIn MIN. OVER
NICKEL (1um)/ 39uIn MIN.
90635-***4 : CONTACT AREA: GOLD (0.51um)/ 20uIn MIN
I.D. AREA: TIN (1um)/ 39uIn MIN. OVER
NICKEL (1um)/ 39uIn MIN.
3. FOR USE WITH No. 26 & 28 AWG STRANDED WIRE (7 CONDUCTORS)
AND No. 28 SOLID WIRE 1.14(.045) DIA. MAX. INSULATION RIBBON
CABLE WITH 1.27(.050) CENTERS.
4. MATING STRAIN RELIEF: MOLEX No. 90170.
5. DIMENSION 'E' IS TOTAL HEIGHT AFTER ASSEMBLED WITH CABLE.
E = 10.5(.413) REF. WITHOUT STRAIN RELIEF.
E = (15.2)/.598 MAX. WITH STRAIN RELIEF No. 90170.
(14.5)/.571 REF. WHEN COMPRESSED .
6. FOR PRODUCT SPECIFICATION, SEE PS 99020-0015.



64	90635-64*	(78.74) 3.100	(82.54) 3.250	(85.88) 3.381
60	90635-60*	(73.66) 2.900	(77.46) 3.050	(80.80) 3.181
50	90635-50*	(60.96) 2.400	(64.76) 2.55	(68.10) 2.681
40	90635-40*	(48.26) 1.900	(52.06) 2.050	(55.40) 2.181
	90635-9402 (CUSTOMER SPECIFIC)			
34	90635-34*	(40.64) 1.600	(44.44) 1.750	(47.78) 1.881
30	90635-30*	(35.56) 1.400	(39.36) 1.550	(42.70) 1.681
26	90635-26*	(30.48) 1.200	(34.28) 1.350	(37.62) 1.481
24	90635-24*	(27.94) 1.100	(31.74) 1.250	(35.08) 1.381
20	90635-20*	(22.86) .900	(26.66) 1.050	(30.00) 1.181
16	90635-16*	(17.78) .700	(21.58) .850	(24.92) .981
14	90635-14*	(15.24) .600	(19.04) .750	(22.38) .881
10	90635-10*	(10.16) .400	(13.96) .550	(17.30) .681
NO. OF CKT.	ENG. NO.	A	B	C



REMOVED OPTION EC NO: E2007-0495 DRAWN BY: BRYNES 2006/12/06 CHKD: CHKD: 2006/12/07 APPROVED: JAHONY 2006/12/07	QUALITY SYMBOLS	GENERAL TOLERANCES (UNLESS SPECIFIED)	DIMENSION STYLE MM/IN	SCALE 4:1	DESIGN UNITS METRIC	THIRD ANGLE PROJECTION
	▽=0 ▽=0	4 PLACES ± --- ± --- 3 PLACES ± --- ± --- 2 PLACES ± --- ± --- 1 PLACE ± --- ± --- ANGULAR ± --- °	DRAWN BY: POB DATE: 1990/09/25 CHECKED BY: JDENNEHY DATE: 2005/08/10 APPROVED BY: JDENNEHY DATE: 2005/08/10	TITLE: QIK FLECS SINGLE BEAM FEMALE ASSEMBLY, PRE-LOADED	MATERIAL NO. SDA-90635	SHEET NO. 2 OF 3
DRAFT WHERE APPLICABLE MUST REMAIN WITHIN DIMENSIONS		SEE CHART	THIS DRAWING CONTAINS INFORMATION THAT IS PROPRIETARY TO MOLEX INCORPORATED AND SHOULD NOT BE USED WITHOUT WRITTEN PERMISSION			

9 8 7 6 5 4 3 2 1