

Excellent Integrated System Limited

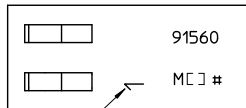
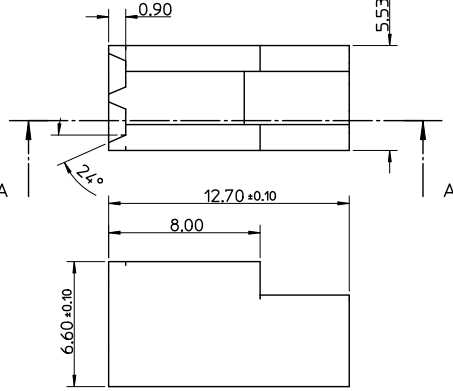
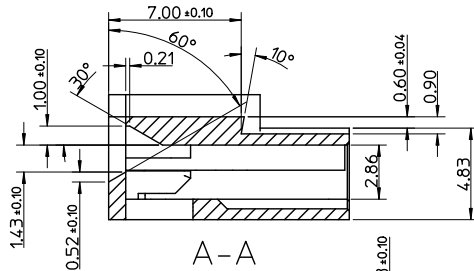
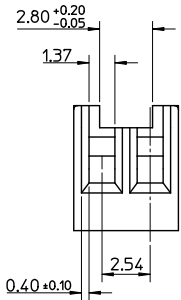
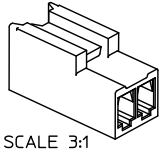
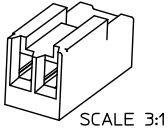
Stocking Distributor

Click to view price, real time Inventory, Delivery & Lifecycle Information:

[Molex Connector Corporation](#)
[0915600002](#)

For any questions, you can email us directly:
sales@integrated-circuit.com

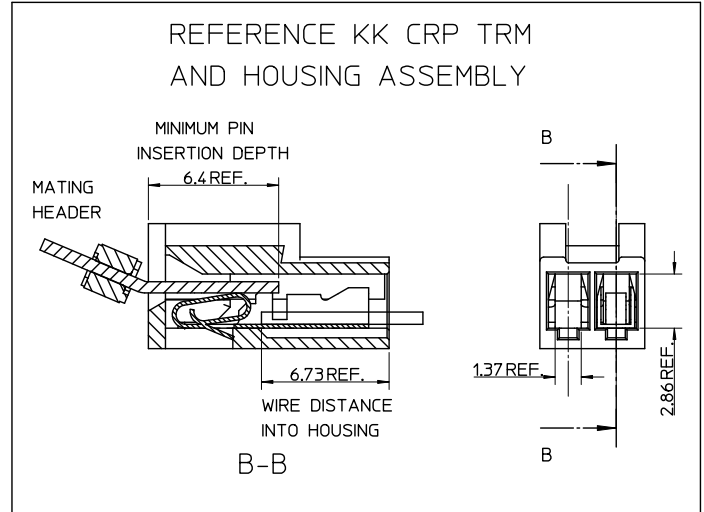
10 9 8 7 6 5 4 3 2 1



CIRCUIT 1 I.D.

NOTES:

1. MATERIAL: POLYAMIDE (PA66/6)UL94 V-0
COLOUR: NATURAL
2. FINISH: N/A
3. FOR PRODUCT SPECIFICATION SEE PS-91560-003
4. PACKAGING: SEE PACKAGING SPECIFICATION PK-91560-005.
5. FOR USE WITH ANTI-FISH HOOKING TERMINAL 8088-(555)L (08-65-0106).
6. THIS PART CONFORMS TO CLASS B REQUIREMENTS OF COSMETIC SPECIFICATION PS-45499-002.



REVISE NOTES EC NO: UICP2010-1407 DRAWN: KKIPPER 2009/12/14 CHKD: J.BELL APPR: 2009/12/17	QUALITY SYMBOLS ▽ 0 ▽ 0	GENERAL TOLERANCES (UNLESS SPECIFIED) mm INCH 4 PLACES ± --- ± --- 3 PLACES ± --- ± --- 2 PLACES ± 0.15 ± --- 1 PLACE ± 0.25 ± --- ANGULAR ± 2°	SCALE 5:1 DESIGN UNITS METRIC DIMENSION STYLE MM ONLY	THIRD ANGLE PROJECTION REVISE ON CAD ONLY	
	DRAWN BY LKIERNAN CHECKED BY BMAGUIRE APPROVED BY MWILHITE	DATE 2001/12/03 DATE 2001/10/03 DATE 2001/10/03	TITLE 2.54MM KK CRP TRM HSG 2CKT	MOLEX INCORPORATED	MATERIAL NO. 915600002 DOCUMENT NO. SD-91560-001 SHEET NO. 1 OF 1
	DRAFT WHERE APPLICABLE MUST REMAIN WITHIN DIMENSIONS		THIS DRAWING CONTAINS INFORMATION THAT IS PROPRIETARY TO MOLEX INCORPORATED AND SHOULD NOT BE USED WITHOUT WRITTEN PERMISSION		
	A3		A3		

9 8 7 6 5 4 3 2 1