

Excellent Integrated System Limited

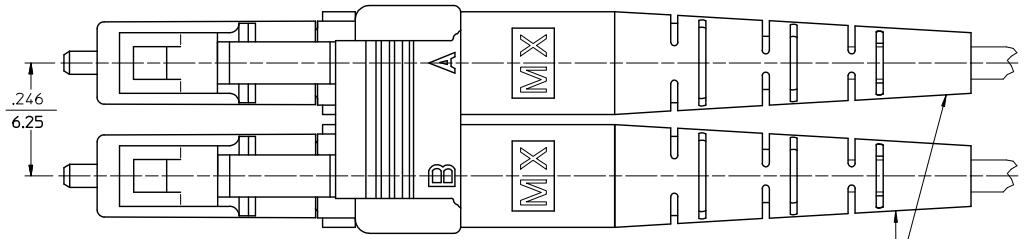
Stocking Distributor

Click to view price, real time Inventory, Delivery & Lifecycle Information:

[Molex Connector Corporation](#)
[1060253300](#)

For any questions, you can email us directly:
sales@integrated-circuit.com

10 9 8 7 6 5 4 3 2 106025

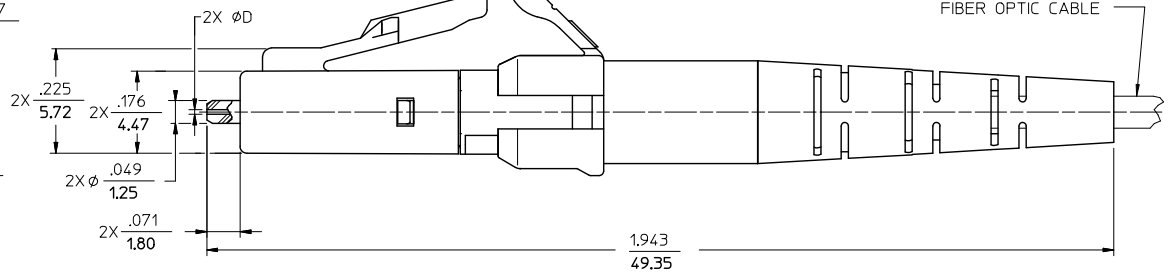
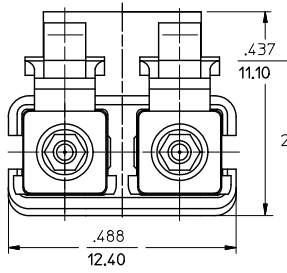


BOOTS

DUPLX CLIP

FIBER OPTIC CABLE

(DUST CAPS NOT SHOWN)



NOTES:

- 1. DUPLX CLIP AND BOOTS SHOULD BE ASSEMBLED AFTER POLISHING OPERATION.
- *2. P/N 106025-3320 AND 106025-5320 ARE BULK PACKED IN QUANTITIES OF 100 PCS.

ENTER DESCRIPTION E.C. NO: ME2013-0203 DRAWN/REVISED: 2012/10/09 CHKD: [] APPR: [] REV: B1	QUALITY SYMBOLS ▽=0 ▽=0	GENERAL TOLERANCES (UNLESS SPECIFIED)		DIMENSION STYLE IN/MM		SCALE 5:1	DESIGN UNITS INCH	THIRD ANGLE PROJECTION	
		4 PLACES ± --- ± --- 3 PLACES ± --- ± --- 2 PLACES ± --- ± --- 1 PLACE ± --- ± --- 0 PLACE ± --- ± ---	mm INCH mm INCH mm INCH mm INCH	DRAWN BY PGIBLIN	DATE 2005/09/06	TITLE LC DUPLEX CONNECTOR		MATERIAL NO. SEE TABLE	
ANGULAR ±1/2° DRAFT WHERE APPLICABLE MUST REMAIN WITHIN DIMENSIONS		THIS DRAWING CONTAINS INFORMATION THAT IS PROPRIETARY TO MOLEX INCORPORATED AND SHOULD NOT BE USED WITHOUT WRITTEN PERMISSION							

9 8 7 6 5 4 3 2 1

CONNECTOR P/N	∅D (μm)	CONNECTOR BODY COLOR	BOOT COLOR	CABLE DESCRIPTION & ∅ (mm)	CABLE TYPE
106025-2000	125.50	BLUE	WHITE	SIMPLEX 1.6	SINGLE MODE
106025-2300			BLACK	SIMPLEX 2.0 ZIPCORD 1.6	
106025-2310				SIMPLEX 1.6	
106025-3000	127.00	BEIGE	WHITE	SIMPLEX 2.0 ZIPCORD 1.6	MULTIMODE
106025-3300			BLUE		
106025-3320*				WHITE	
106025-3310			SIMPLEX 1.6		
106025-4000	125.00	BLUE	WHITE	SIMPLEX 1.6	SINGLE MODE
106025-4300				SIMPLEX 2.0 ZIPCORD 1.6	
106025-5000	126.00	BLUE	BLUE	SIMPLEX 1.6	
106025-5300				SIMPLEX 2.0 ZIPCORD 1.6	
106025-5320*				SIMPLEX 1.6	
106025-5310				SIMPLEX 2.0 ZIPCORD 1.6	
106025-6000	125.25	BLUE	WHITE	SIMPLEX 1.6	
106025-6300				SIMPLEX 2.0 ZIPCORD 1.6	

ENTER DESCRIPTION EC NO: ME2013-0203 DRAWN: KEVZNER 2012/10/09 CHKD: APPR: GUMIN 2012/10/09 DESCRIPTION REV B1	QUALITY SYMBOLS 	GENERAL TOLERANCES (UNLESS SPECIFIED) <table border="1"> <thead> <tr> <th></th> <th>mm</th> <th>INCH</th> </tr> </thead> <tbody> <tr> <td>4 PLACES</td> <td>± ---</td> <td>± ---</td> </tr> <tr> <td>3 PLACES</td> <td>± ---</td> <td>± ---</td> </tr> <tr> <td>2 PLACES</td> <td>± ---</td> <td>± ---</td> </tr> <tr> <td>1 PLACE</td> <td>± ---</td> <td>± ---</td> </tr> <tr> <td>0 PLACE</td> <td>±</td> <td>±</td> </tr> </tbody> </table>		mm	INCH	4 PLACES	± ---	± ---	3 PLACES	± ---	± ---	2 PLACES	± ---	± ---	1 PLACE	± ---	± ---	0 PLACE	±	±	DIMENSION STYLE IN/MM DRAWN BY PGIBLIN DATE 2005/09/06 CHECKED BY DATE APPROVED BY DATE	SCALE 5:1 DESIGN UNITS INCH THIRD ANGLE PROJECTION	TITLE LC DUPLEX CONNECTOR
		mm	INCH																				
	4 PLACES	± ---	± ---																				
	3 PLACES	± ---	± ---																				
	2 PLACES	± ---	± ---																				
1 PLACE	± ---	± ---																					
0 PLACE	±	±																					
DRAFT WHERE APPLICABLE MUST REMAIN WITHIN DIMENSIONS		MATERIAL NO. SEE TABLE	DOCUMENT NO. SD-1060DD-DDD0	SHEET NO. 2 OF 1																			
THIS DRAWING CONTAINS INFORMATION THAT IS PROPRIETARY TO MOLEX INCORPORATED AND SHOULD NOT BE USED WITHOUT WRITTEN PERMISSION																							

tb_frame_A_P_ME_T
Rev E1 2012/01/25

5 4 3 2 1