

## Excellent Integrated System Limited

Stocking Distributor

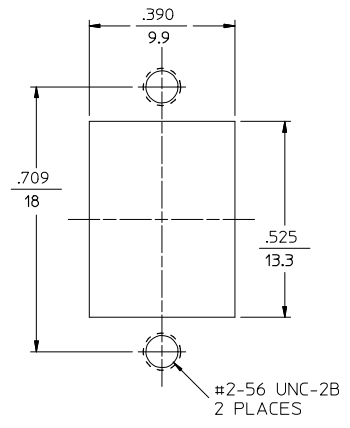
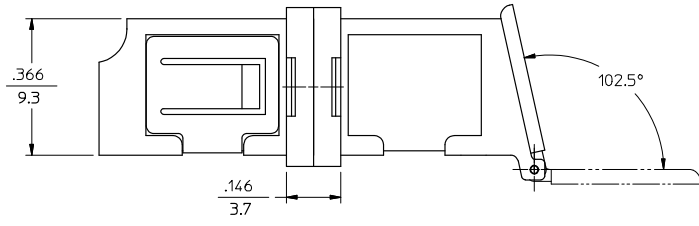
Click to view price, real time Inventory, Delivery & Lifecycle Information:

[Molex Connector Corporation](#)  
[1061271590](#)

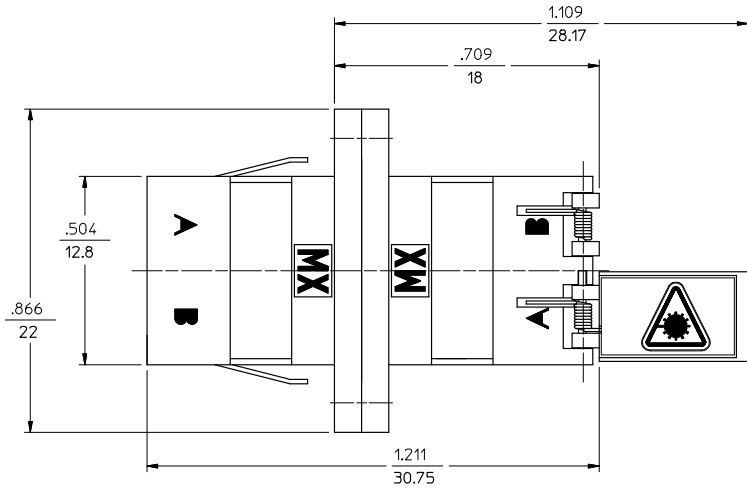
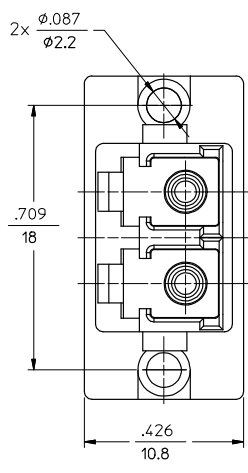
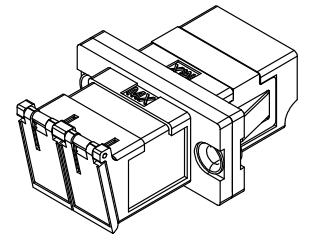
For any questions, you can email us directly:

[sales@integrated-circuit.com](mailto:sales@integrated-circuit.com)

LC ADAPTER ASSY. P/N	LC SLEEVE MATERIAL
106127-0590	PH. BRONZE
106127-1590	ZR



RECOMMENDED MOUNTING CUTOUT FOR .063 THICK PANEL



- NOTES:
1. ALL DIMENSIONS ARE FOR REFERENCE ONLY.
  2. DUST CAPS NOT SHOWN.
  3. ADAPTER TO BE PACKAGED IN TRAY.

ENTER DESCRIPTION EC NO: MF2008-0344 DRAWN BY: PGIBLIN CHKD: PGIBLIN APPR: LGUMIN DATE: 2008/02/22 DATE: 2008/02/22 DATE: 2008/02/22	QUALITY SYMBOLS	GENERAL TOLERANCES (UNLESS SPECIFIED) <table border="1"> <tr> <td></td> <td>mm</td> <td>INCH</td> </tr> <tr> <td>4 PLACES</td> <td>± .005</td> <td>± .0004</td> </tr> <tr> <td>3 PLACES</td> <td>± .004</td> <td>± .0003</td> </tr> <tr> <td>2 PLACES</td> <td>± .003</td> <td>± .0002</td> </tr> <tr> <td>1 PLACE</td> <td>± .002</td> <td>± .0001</td> </tr> </table>		mm	INCH	4 PLACES	± .005	± .0004	3 PLACES	± .004	± .0003	2 PLACES	± .003	± .0002	1 PLACE	± .002	± .0001	DIMENSION STYLE IN/MM	SCALE 4:1	DESIGN UNITS INCH	THIRD ANGLE PROJECTION
			mm	INCH																	
	4 PLACES		± .005	± .0004																	
	3 PLACES		± .004	± .0003																	
2 PLACES	± .003	± .0002																			
1 PLACE	± .002	± .0001																			
DESCRIPTION	<table border="1"> <tr> <td>▽=0</td> </tr> <tr> <td>▽=0</td> </tr> </table>	▽=0	▽=0	<table border="1"> <tr> <td>DRAWN BY</td> <td>DATE</td> </tr> <tr> <td>PGIBLIN</td> <td>2005/10/05</td> </tr> <tr> <td>CHECKED BY</td> <td>DATE</td> </tr> <tr> <td>APPROVED BY</td> <td>DATE</td> </tr> </table>	DRAWN BY	DATE	PGIBLIN	2005/10/05	CHECKED BY	DATE	APPROVED BY	DATE	TITLE METAL LC DUPLEX ADAPTER	MOLEX INCORPORATED							
▽=0																					
▽=0																					
DRAWN BY	DATE																				
PGIBLIN	2005/10/05																				
CHECKED BY	DATE																				
APPROVED BY	DATE																				
REV	DRAFT WHERE APPLICABLE MUST REMAIN WITHIN DIMENSIONS	MATERIAL NO. SEE TABLE	DOCUMENT NO. SD-106127-X590	SHEET NO. 1 OF 01																	
A2	SIZE B	THIS DRAWING CONTAINS INFORMATION THAT IS PROPRIETARY TO MOLEX INCORPORATED AND SHOULD NOT BE USED WITHOUT WRITTEN PERMISSION																			