

Excellent Integrated System Limited

Stocking Distributor

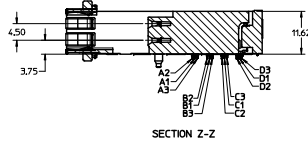
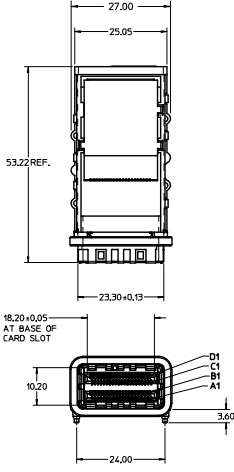
Click to view price, real time Inventory, Delivery & Lifecycle Information:

[Molex Connector Corporation](#)
[1704650002](#)

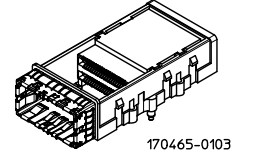
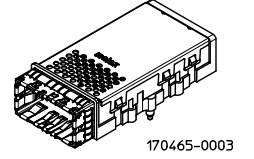
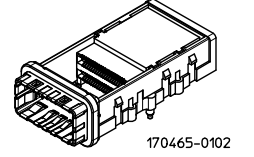
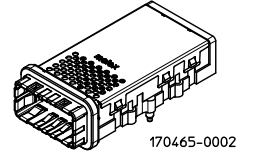
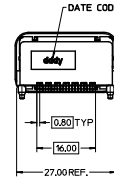
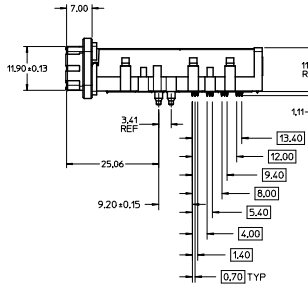
For any questions, you can email us directly:

sales@integrated-circuit.com

PART NUMBER	DESCRIPTION / OPTIONS	TOOLING STATUS
170465-0002	ASSEMBLY WITH COVER AND EMI GASKET	TOOLED
170465-0102	ASSEMBLY NO COVER AND EMI GASKET	TOOLED
170465-0003	ASSEMBLY WITH COVER AND EMI SPRINGS	TOOLED
170465-0103	ASSEMBLY NO COVER AND EMI SPRINGS	TOOLED



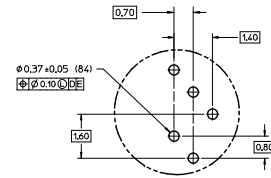
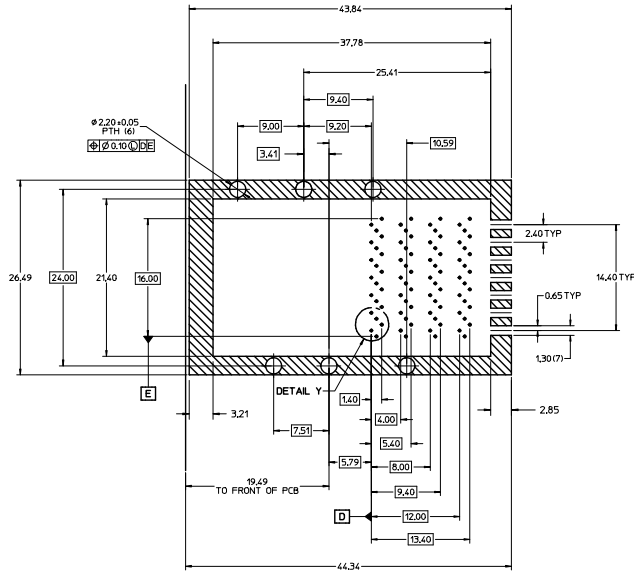
170465-0102 SHOWN



NOTES:

- MATERIALS:**
CONNECTOR HOUSING: HIGH TEMPERATURE THERMOPLASTIC GLASS-FILLED, UL 94V-0
EMI HOUSING: NICKEL PLATED DIE CAST ALLOY
COVER: STAINLESS STEEL ALLOY
EMI GASKET: CONDUCTIVE POLYMER
EMI SPRINGS: COPPER ALLOY, TIN PLATED
TERMINALS: COPPER ALLOY
- TERMINAL PLATING:**
CONTACT AREA: 0.764mm MIN. GOLD OVER 2.54mm MIN. NICKEL
TN TAIL AREA: 0.764mm - 1.524mm TIN OVER 1.274mm MIN. NICKEL
- THIS CONNECTOR IS DESIGNED TO MATE WITH MOLEX CABLE SERIES INDICATED IN THE MOLEX PRODUCT SPEC, PS-170465-0001.
- REFER TO ROUTING GUIDE AS-170465-0002 FOR PCB TRACE INFORMATION.
- PACKAGING SPECIFICATION: TRAY PACK PER PK-170465-0001.
- REFER TO AS-170465-0001 FOR THE APPLICATION SPECIFICATION.
- MOUNTING HARDWARE REQUIRED: M2x0.4 CAP SCREWS (4)
MOUNTING SCREW LENGTH: BOARD THICKNESS + 4mm MAX

ADD DIM SHFT 0.15 EC NO. 170465-0002 DRWNSPRATT 2015/07/20 CHKORRANKIS 2015/07/20 APPRORRANKIS 2015/07/20 REV	QUALITY SYMBOLS	GENERAL TOLERANCES (UNLESS SPECIFIED)	DIMENSION STYLE MM ONLY		SCALE 2:1	DESIGN UNITS METRIC	THIRD ANGLE PROJECTION	
	▽=0	4 PLACES ±--- ±---	mm	INCH	DRAWN BY SBOGIEL	DATE 2014/03/27	TITLE I-PASS PLUS CXP EF 84 CIRCUIT	
	▽=0	3 PLACES ±--- ±---	±0.25	±---	CHECKED BY SPRATT	DATE 2014/07/02		
	▽=0	2 PLACES ±--- ±---	±---	±---	APPROVED BY	DATE		
		1 PLACE ±--- ±---						
		0 PLACE ±--- ±---						
		ANGULAR ±1/2°	MATERIAL NO.		DOCUMENT NO.	SHEET NO.		
		DRAFT WHERE APPLICABLE MUST REMAIN WITHIN DIMENSIONS	SEE CHART		SD-170465-0001	1 OF 5		
			THIS DRAWING CONTAINS INFORMATION THAT IS PROPRIETARY TO MOLEX INCORPORATED AND SHOULD NOT BE USED WITHOUT WRITTEN PERMISSION					



RECOMMENDED PCB LAYOUT
COMPONENT SIDE SHOWN

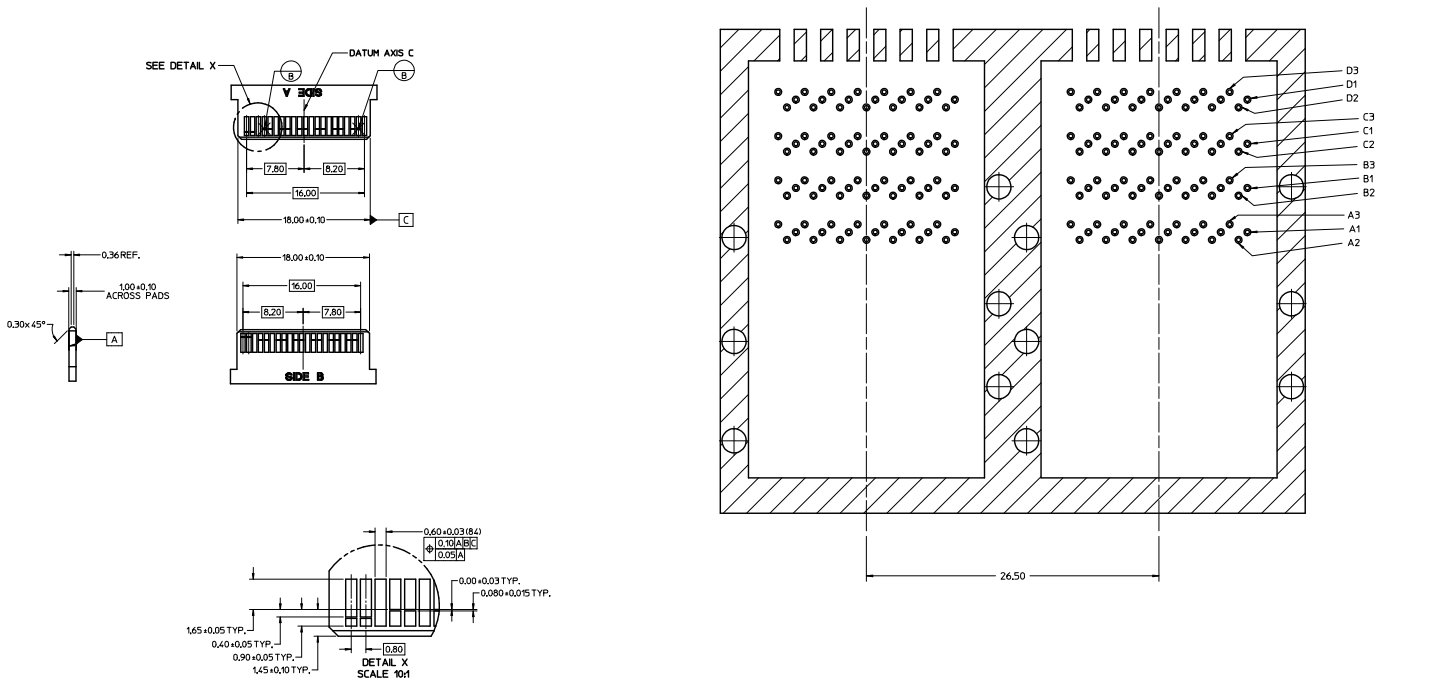
DETAIL Y
SCALE 15:1

PCB THICKNESS: 1.57mm MIN.

NOTES:

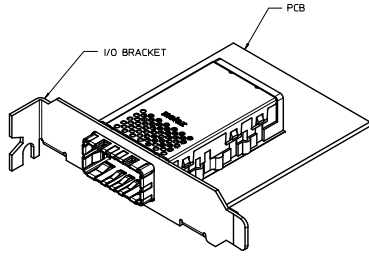
- CROSS-HATCHED AREA TO BE CONDUCTIVE ON THE PCB.
- CROSS-HATCHED AREA MUST BE INCORPORATED IN THE PLAT ROCK PRESS-FIT TOOLING.
- REFER TO THE PLATING DETAIL OF THE COMPLIANT P/N HOLES IN THE APPLICATION SPEC AS-170465-0002 FOR THE DRILL SIZE AND ANNULAR RING FOR THE 0.37 ϕ FINISHED HOLE.
- MINIMUM RECOMMENDED SPACING: 26.50mm

SEE SHEET 1 ECN NO. IEP2015-2915 2015/01/28 EDWIN SPRATT CHK'D BY: MAMAS 2015/01/28 APPROVED BY: MAMAS 2015/01/28 MAMAS	QUALITY SYMBOLS $\nabla=0$ $\nabla=0$ $\nabla=0$	GENERAL TOLERANCES (UNLESS SPECIFIED): mm INCH 4 PLACES \pm --- \pm --- 3 PLACES \pm --- \pm --- 2 PLACES \pm 0.25 \pm --- 1 PLACE \pm --- \pm --- 0 PLACE \pm --- \pm --- ANGULAR: 1/2 ϕ DRAFT WHERE APPLICABLE MUST REMAIN WITHIN DIMENSIONS	DIMENSION STYLE MM ONLY DRAWN BY: SBUGIEL DATE: 2014/03/27 CHECKED BY: GPRATT DATE: 2014/07/02 APPROVED BY:	SCALE 4:1 DESIGN UNITS METRIC THIRD ANGLE PROJECTION	TITLE I-PASS PLUS CXP EF 84 CIRCUIT molex	MATERIAL NO. SEE CHART SIZE D	DOCUMENT NO. SD-170465-0001	SHEET NO. 2 OF 5
	THIS DRAWING CONTAINS INFORMATION THAT IS PROPRIETARY TO MOLEX INCORPORATED AND SHOULD NOT BE USED WITHOUT WRITTEN PERMISSION							

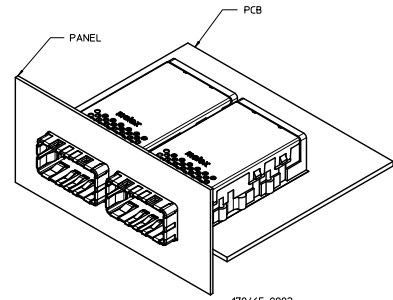


- NOTES:
- 0.03 MINIMUM KEEP OUT FOR SOLDER MASK AROUND ALL PADS
 - DATUM B TARGETS ARE DEFINED BY THE RESPECTIVE PAD CENTER LINES AND THE LEADING EDGE OF THE TARGET PADS

SEE SHEET 1 REC. NO. WF2705-2915 DRAWN BY: SBOGIEL CHK'D BY: SBOGIEL APPR'D BY: SBOGIEL DATE: 2015/01/20 DATE: 2015/01/20 DATE: 2015/01/20	QUALITY SYMBOLS	GENERAL TOLERANCES (UNLESS SPECIFIED)	DIMENSION STYLE	SCALE	DESIGN UNITS	THIRD ANGLE PROJECTION	
	∇=0 ∇=0 ∇=0	mm INCH 4 PLACES ± --- ± --- 3 PLACES ± --- ± --- 2 PLACES ± 0.25 ± --- 1 PLACE ± --- ± --- 0 PLACE ± --- ± ---	MM ONLY	6:1	METRIC	DRAWN BY: SBOGIEL CHECKED BY: SBOGIEL APPROVED BY: SBOGIEL DATE: 2014/03/27 DATE: 2014/07/02	TITLE: I-PASS PLUS CXP EF 84 CIRCUIT molex DOCUMENT NO: SD-170465-0001 SHEET NO: 3 OF 5
	ANGULAR: ±1/2° DRAFT WHERE APPLICABLE MUST REMAIN WITHIN DIMENSIONS	MATERIAL NO.	SEE CHART	THIS DRAWING CONTAINS INFORMATION THAT IS PROPRIETARY TO MOLEX INCORPORATED AND SHOULD NOT BE USED WITHOUT WRITTEN PERMISSION			

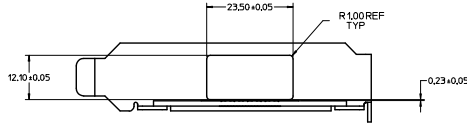


170465-0002
SHOWN

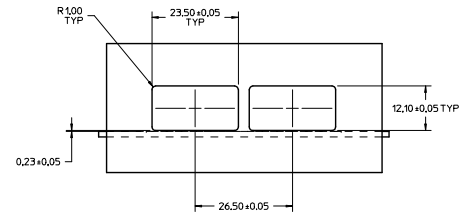
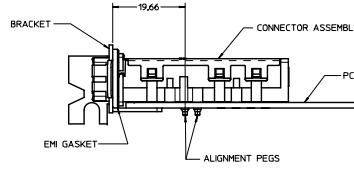


170465-0002
SHOWN

FOR ASSEMBLIES
170465-0002 & 170465-0102

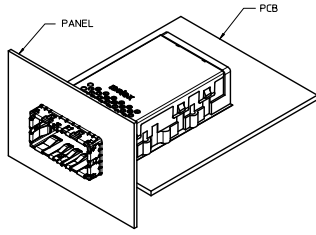


RECOMMENDED I/O BRACKET CUT-OUT
(NOT SUPPLIED)

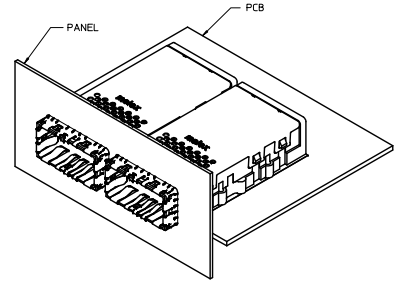


RECOMMENDED PANEL CUT-OUT
(NOT SUPPLIED)

SEE SHEET 1 REC. NO. 167205-2915 DRAWN BY H1 CHECKED BY H1 APPROVED BY H1 DATE 2015/07/28 DATE 2015/07/28 DATE 2015/07/28	QUALITY SYMBOLS	GENERAL TOLERANCES (UNLESS SPECIFIED)	DIMENSION STYLE	SCALE	DESIGN UNITS	THIRD ANGLE PROJECTION	
	∇=0 ∇=0 ∇=0	mm INCH 4 PLACES ± --- ± --- 3 PLACES ± --- ± --- 2 PLACES ± 0.25 ± --- 1 PLACE ± --- ± --- 0 PLACE ± --- ± ---	MM ONLY	2:1	METRIC	DRAWN BY SBUGIEL CHECKED BY DATE 2014/03/27 APPROVED BY SPRATT DATE 2014/07/02	I-PASS PLUS CXP EF 84 CIRCUIT
	ANGULAR ±1/2° DRAFT WHERE APPLICABLE MUST REMAIN WITHIN DIMENSIONS	MATERIAL NO. SEE CHART SIZE D	DOCUMENT NO. SD-170465-0001	SHEET NO. 4 OF 5			
	THIS DRAWING CONTAINS INFORMATION THAT IS PROPRIETARY TO MOLEX INCORPORATED AND SHOULD NOT BE USED WITHOUT WRITTEN PERMISSION						

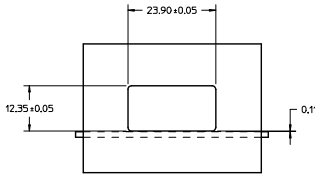


170465-0003
SHOWN

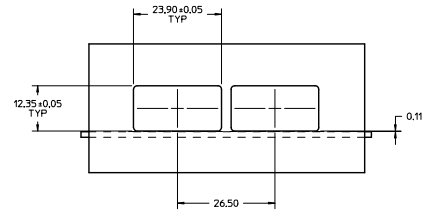
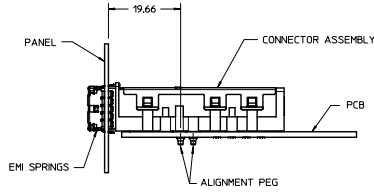


170465-0003
SHOWN

FOR ASSEMBLIES
170465-0003 & 170465-0103



RECOMMENDED SINGLE PANEL CUT-OUT
(NOT SUPPLIED)



RECOMMENDED DUAL PANEL CUT-OUT
(NOT SUPPLIED)

SEE SHEET 1 ECN NO. 170205-2915 2015/01/28 DRAWN: SPRATT 2015/01/28 CHECKED: BANKS 2015/01/28 APPROVED: BANKS 2015/01/28 HHT (REV)	QUALITY SYMBOLS	GENERAL TOLERANCES (UNLESS SPECIFIED)	DIMENSION STYLE	SCALE	DESIGN UNITS	THIRD ANGLE PROJECTION	
	∇=0 4 PLACES ±--- ±--- ∇=0 3 PLACES ±--- ±--- ∇=0 2 PLACES ±0.25 ±--- ∇=0 1 PLACE ±--- ±--- ∇=0 0 PLACE ±--- ±---	mm INCH ±--- ±--- ±--- ±--- ±--- ±--- ±--- ±---	MM ONLY	2:1	METRIC	DRAWN BY: SBUEGEL DATE: 2014/03/27 CHECKED BY: SPRATT DATE: 2014/07/02 APPROVED BY: GATE	TITLE: I-PASS PLUS CXP EF 84 CIRCUIT molex DOCUMENT NO.: SD-170465-0001 SHEET NO.: 5 OF 5
	ANGULAR: ±1/2° DRAFT WHERE APPLICABLE MUST REMAIN WITHIN DIMENSIONS	MATERIAL NO.	SEE SHEET 1	THIS DRAWING CONTAINS INFORMATION THAT IS PROPRIETARY TO MOLEX INCORPORATED AND SHOULD NOT BE USED WITHOUT WRITTEN PERMISSION			